

### 1 Teaching

#### Quality First Teaching

Focus on wellbeing and emotional needs of pupils.

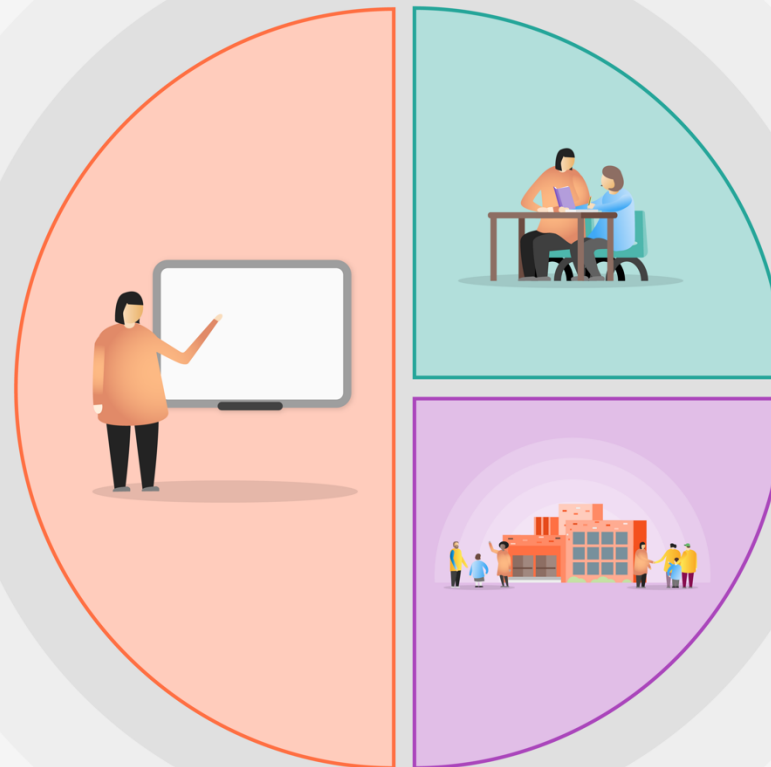
Implementation of a rebuilding curriculum

Whole school focus on writing

PiXL assessment package to identify specific gaps in learning in reading, writing, GPS and maths.

Teachers and TA's to use therapies to address specific gaps in learning as identified through assessments.

Development of a remote learning platform – google classroom.



### 2 Targeted academic support

Additional specific support groups, before, during and after school to support children who have fallen behind as a result of Lockdown.

Assessment of all pupils in phonics/reading, writing, SPAG and maths to gauge effect of lockdown 1.

TA deployment

### 3 Wider strategies

Purchase additional resources to support home learning. Mental Health resources in each class.

Educational welfare officer to support attendance.  
School behaviour policy  
Emotional literacy support assistant  
Lego therapy  
Drawing and talking  
CPD to support staff wellbeing and spiritual life of the school