



# St Mary's Newsletter

Issue 8

12<sup>th</sup> January 2024

St. Mary's Catholic Primary School, Woodbridge Road, Ipswich, IP4 4EU

<http://www.stmaryscatholicprimaryipswich.com>

## School Rules:

Be ready, Be respectful, Be safe

## Tweet of the Week

"The voracity with which we have been devouring the resources of the planet for a few centuries now is compromising everyone's future. We have pounced on everything, aiming at becoming masters of all things, even though they were entrusted to our stewardship.

#GeneralAudience"

*Pope Francis (@Pontifex)*

## Week Commencing 15<sup>th</sup> January 2024

Mon 15<sup>th</sup> Jan: Year 4 Swimming Lessons

Wed 17<sup>th</sup> Jan: Years 5 & 6 Girls Netball Club  
Recommences

Thurs 18<sup>th</sup> Jan: School Census Day

Thurs 25<sup>th</sup> Jan: Year 3 Parish Mass in Church at 9.15am

Thurs 25<sup>th</sup> Jan: Years 5 & 6 Mass in School at 2.30pm – *Parents/Carers Welcome*

Wed 31<sup>st</sup> Jan: Curriculum Evening Online – Maths & Online Safety



Dear Parents and Carers,

Happy New Year. Thank you for all the gifts and good wishes over Christmas. It has been lovely to welcome all the children back to school.

I'm sure you will have noticed our history timeline installation. A huge thank you to everyone who has supported the Friends of St Mary's fundraising events. Without your support, we would not have been able to purchase the timeline. The children and staff have been captivated looking at the order of key events in history. We look forward to using it in our history lessons.

The parent survey ends soon and helps us to adapt and respond to your ideas to improve the school. Please take a few minutes to complete this survey: <https://forms.office.com/e/Fd25F3aN2v>

Warm Regards

Mrs Berry and Mrs Measham

## CENSUS SCHOOL LUNCH

Our school census day will be held on **Thursday 18<sup>th</sup> January** and we need as many children to have a school meal that day as possible, please, as the more we have the more funding the school receives from the DFE.

Children will be able to choose cheese & tomato or vegetable pizza. To try to encourage all children to try school meals, we will order a taster meal for everyone in Reception, Year 1 and Year 2 and all those in receipt of Pupil Premium.



Parents Survey 2023/24



## SPORTS CLUBS SPRING TERM 2024

### **Mondays**

Football Club (years 1, 2 & 3) 3.30-4.30pm. This club is full.

### **Wednesdays**

Netball Club (years 5 & 6 girls) 3.30-4.15pm.

Football Club (years 4, 5 & 6 boys) 3.30-4.30pm.

### **Thursdays**

Football Club (years 4, 5 & 6 girls) starts at 8am.

### **Fridays**

Multisports Club (years 1, 2 & 3) starts at 8am. This club is full.

Handball & Dodgeball (KS2) starts at 12.10pm. This club is full.

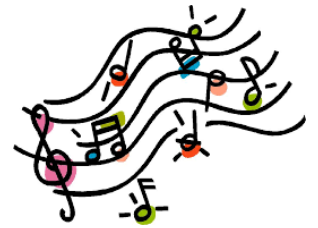
Multisports Club (years 4, 5 & 6) 3.30-4.30pm.

Please contact the School Office for further information.



## ORCHESTRA

The group starts up again for the Spring Term on Thursday 18<sup>th</sup> January (3.30-4.15pm).



### **MUSIC LESSONS**

Reminder of days when pre-booked and pre-paid lessons take place.

Mondays – Violin

Tuesdays – Brass

Thursdays – Woodwind

Please encourage your children to remember their instrument!

## COOL MILK

If any parent/carer would like to pay for morning milk and their child is older than 5, they can register using the link below and pay Cool Milk. Please could we ask that you send an email to the School Office to confirm if you have paid for your child to receive milk after this week, and we will add them to our records. Many thanks. <https://www.coolmilk.com>





### LOST PROPERTY

Please can we remind parents to name all property, as it helps us to reunite lost items. We have a large selection of lost property in the Office, which you are welcome to sort through!



### JOB VACANCIES

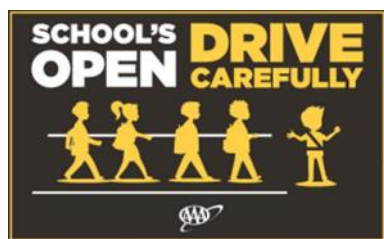
- Effective as soon as possible, we have vacancies in school for midday supervisors to help with our busy lunchtimes during term time.

The hours are 11.40am – 12.50pm (70mins per day); five days per week.

The current hourly rate is £10.98 (subject to pay rise in negotiation) for 38 weeks per year (plus 5 weeks paid holiday).

This is an excellent opportunity to get paid experience of working in a school.

If you would like to know more or know of someone who would like this role, please email: [admin@st-marys-ipswich.suffolk.sch.uk](mailto:admin@st-marys-ipswich.suffolk.sch.uk)



### CAR PARK ETIQUETTE

We are fortunate in that we have use of a school and church car park. Can we please politely remind parents/carers to drive carefully and park considerately to keep our children safe.

### READY TO LEARN

William Shakespeare wrote "Better three hours too soon than a minute too late." While we don't expect our children to arrive in the early hours of the morning, please ensure that they are in the playground at 8.40am for when the bell rings. The roads are busy in Ipswich but perhaps leave a few minutes early to account for this. A late arrival after 8.50am means the class has already started and this is disruptive for your child and others in the class. Please remind children to come equipped for the day.



If your child is ill, please leave a message on the School Absence Line (01473 728372) before 8am, or send an email to: [admin@st-marys-ipswich.suffolk.sch.uk](mailto:admin@st-marys-ipswich.suffolk.sch.uk) We do ask that all children who have been sick or had diarrhoea remain at home until 48 hours after the last episode of sickness or diarrhoea. Please try to make appointments outside of school hours, however, for unavoidable medical appointments we do request notice in advance.

### WEATHER

Despite the weather getting colder we will hopefully still go outside for breaktime. Please ensure your child comes to school with a warm coat and gloves (plus a hat and scarf if they wish). Thank you.



**If your child was born between  
1 September 2019 and  
31 August 2020,  
you must apply for a full-time  
Reception Year school place by  
15 January 2024**



You **must** make an application even if your child already has a place in a nursery class, pre-school or family hub

To apply for a place or for more information you can visit:

[www.suffolk.gov.uk/admissions](http://www.suffolk.gov.uk/admissions)

Information is also available from:

• The Admissions Team on **0345 600 0981**

• Your local school

**IMPORTANT:** St Mary's require a completed Supplementary Information Form (SIF) which should be sent to the school before 15<sup>th</sup> January deadline please. The Supplementary Information Form (SIF) can be found on our website under *Key Information – Admissions*

## HELP SHAPE THE FUTURE OF LIBRARY SERVICES IN SUFFOLK

Ahead of awarding a new contract for library services next year, Suffolk County Council is seeking views from the public, businesses and schools about what is important to them, to help shape the next chapter of library services in Suffolk.



We want to hear views about services offered in library buildings as well as the mobile library service. Regardless of current use of library services, we want to hear everyone's views. See: [www.suffolk.gov.uk/LibraryConsultation](http://www.suffolk.gov.uk/LibraryConsultation)

There is a survey designed for children aged 8-13 years old, for them to have a say: <https://www.smartsurvey.co.uk/s/Libraries2023Children/>

The consultation closes on 26<sup>th</sup> January 2024. Thank you for your help.

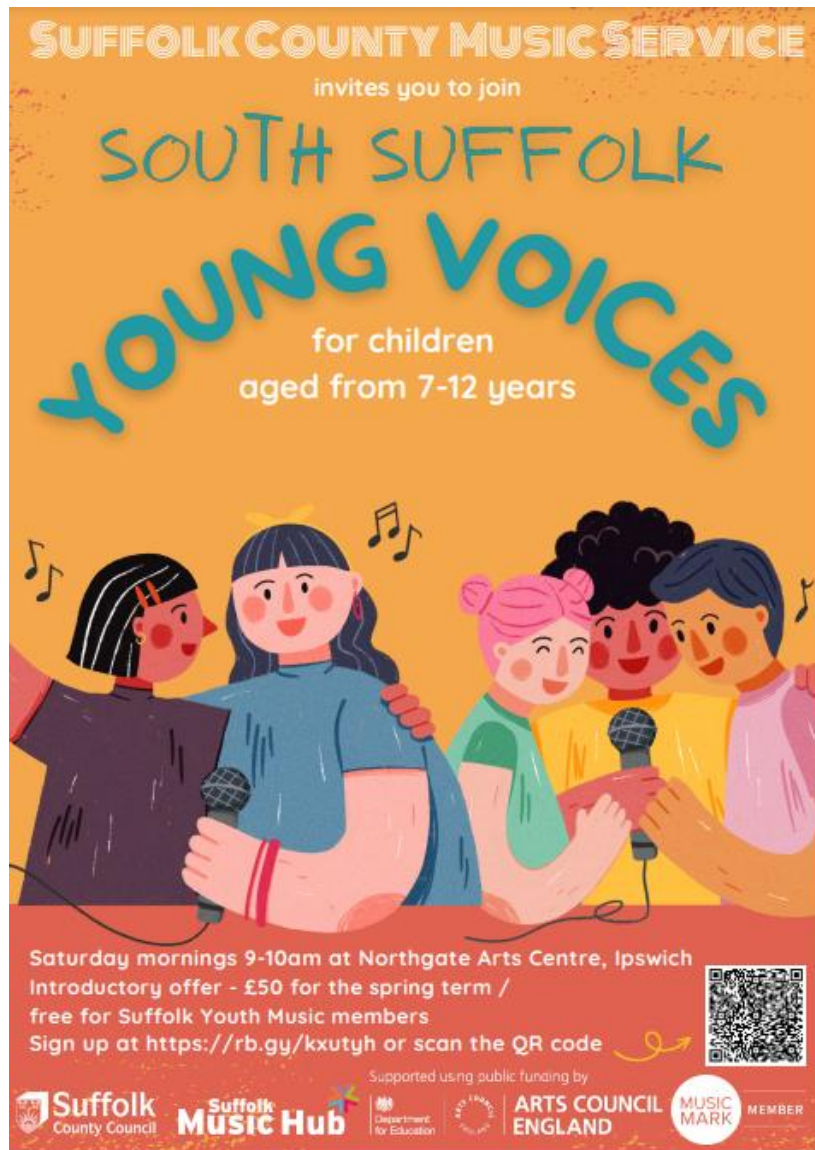
## EAST OF ENGLAND SEND NETWORK FOR CHILDREN & YOUNG PEOPLE

Children and young people with SEND are invited to join an East of England SEND Network. The network provides a space for young people from across the region to discuss things that matter to them so that their voices are heard at a higher level.

Meetings will be held online initially, every 1 to 2 months. The next meeting will take place on 25<sup>th</sup> January 2024. Children and young people can join with their education setting or as an individual.

If a child or young person or education setting would like to be involved or get further information, please email: [susie.mcivor@suffolk.gov.uk](mailto:susie.mcivor@suffolk.gov.uk) or [Kierran.Pearce@essex.gov.uk](mailto:Kierran.Pearce@essex.gov.uk)





## NEW CHOIR LAUNCHING JANUARY 2024

Suffolk County Music Service are launching a new weekly choir at Northgate Arts Centre, Ipswich on a Saturday morning (9.00 – 10.00am) from January 2024.

Aimed at children aged 7-12 years, this is an opportunity for anyone who loves to sing, to join with others and make new friends whilst singing their heart out to a wide variety of songs. Our introductory offer of £50 for the Spring term is available now (free to current Suffolk Youth Music members). Anybody who is interested in joining will need to sign up at <https://www.suffolkmusicshub.co.uk/take-part/suffolk-youth-music-activities/>

Contact: 01473 263400 or [county.musicservice@suffolk.gov.uk](mailto:county.musicservice@suffolk.gov.uk)

## FRIENDS OF ST MARY'S

Welcome back! We hope that you had a lovely Christmas and New Year.

We have a virtual meeting next week to plan out events and fundraisers for the rest of the year, so if you have any ideas or suggestions, please get in touch via [friendsofstmarysipswich@gmail.com](mailto:friendsofstmarysipswich@gmail.com) – or contact us for the details to dial on – you're all very welcome.

One of our best low maintenance fundraisers is the school lottery and we are keen to increase the number of participants. If you can spare £1 a week then please do consider signing up.

[https://www.yourschoollottery.co.uk/lottery/school/st-marys-catholic-primary-school-ipswich?utm\\_campaign=getaway-jan24&utm\\_source=cause-admin&utm\\_medium=social&utm\\_content=Hyperlink](https://www.yourschoollottery.co.uk/lottery/school/st-marys-catholic-primary-school-ipswich?utm_campaign=getaway-jan24&utm_source=cause-admin&utm_medium=social&utm_content=Hyperlink)

What's in it for you? Well, it's a bit of fun! There's a guaranteed prize pot each week for St Mary's players, which gets larger the more St Mary's players we have! So, you have a very good chance of a little windfall every Saturday.

There is also the chance to match your chosen numbers and win a grand jackpot prize. Finally, they have regular special prizes such as this one – win a luxury getaway or £1,000!

What's in it for the school and the PTA? Guaranteed, reliable fundraising. For every pound you spend on the lottery, we get a guaranteed 40p. There is also the extra option for players to donate their winnings if they like. It's all online, impartially and professionally run, so we don't need to worry about cash handling and it's all kept very fair.

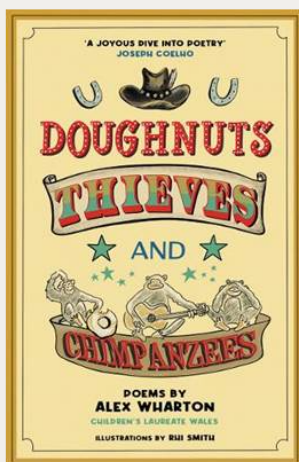
If you have any questions, do let us know, otherwise – please sign up today and play along!

Have a lovely week.  
Friends of St Mary's team



Our lovely new history timeline installation, funded by the Friends of St Mary's thanks to support from the school community.

## BOOK RECOMMENDATION



Interest age: 9-8  
Reading age: 7+

## Doughnuts, Thieves and Chimpanzees

**Author:** Alex Wharton **Illustrator:** Rhi Smith **Publisher:** Firefly Press

This second poetry collection from Alex Wharton, Children's Laureate Wales 2023-2025, is full of humour and playful poems. There are poems about feelings, poems about mice and school and monsters, and even a poem about a horse sitting on the loo! Many rhyme, lots have a strong rhythm, and there are also some raps and songs included. All of these poems are perfect for reading aloud and enjoying the sounds of the words.

Alex Wharton has been a spoken word children's poet for many years, and the aim of this collection is to encourage a new generation of poets. He includes explanations of some poetic forms, like haiku and limericks, and then gives many examples. In the case of Ekphrastic poetry – poems inspired by visual art – there are even two drawings to inspire the reader to write their own poem. At the back there are tips on performing poetry, too.

This slim volume is full of gems that would work well in a classroom, both to inspire poem writing and to simply enjoy reading the poems aloud.

## Lighthouse

Lighthouse Women's Aid  
238 Felixstowe Road  
Ipswich  
IP3 9AD

t: 01473 220 770  
e: [admin@lighthousewa.org.uk](mailto:admin@lighthousewa.org.uk)

Natalie Southgate  
St Mary's School, Ipswich  
[Natalie.Southgate@st-marys-ipswich.suffolk.sch.uk](mailto:Natalie.Southgate@st-marys-ipswich.suffolk.sch.uk)

2<sup>nd</sup> January 2024

Dear Natalie,

Thank you very much to you and the Staff and students at St Mary's Ipswich who kindly donated so many wonderful gifts, as well as gift cards totalling £30 in response to our Christmas Appeal. Donations like these really help Lighthouse provide another layer of support to those that turn to us in need.

As you know Lighthouse is a local, independent charity and in the current situation it is a huge challenge to ensure we are there to provide the support that is so desperately needed. Support from local businesses, community groups and individuals, are vitally important to enable Lighthouse to sustain and develop our services not just now but in the coming months and years.

Here in Suffolk and the UK as a whole we are still seeing an increase in victims of domestic abuse. In July/August this year we supported 450 women through our Women's Centre. Our Families & Children's Worker is providing support that the children also so desperately need to help them recover, this includes groups sessions with mum and also one to one sessions, so that the child can explore and express their feelings. Our Community Worker continues to establish links with other organisations to ensure we are reaching those who find it more difficult to make contact. Our Refuge continues to see a steady flow of women and families arriving who need safe emergency accommodation and at Christmas this is even more poignant.

Our Domestic Abuse Awareness training and consultancy for business, agencies and charities, is proving popular with more organisations understanding that this work is hugely important to ensure that everyone is aware of domestic abuse, what it is, the signs and very importantly how to react to a discloser and where to sign post.

Thank you again for your valued support, we take great pride in our mission and accomplishments, and with your help we can continue to support those in need.

Yours sincerely

*Deborah Johnson*  
Business Coordinator  
Deborah Johnson

*Over 45 years providing safe and supportive refuge*

Advice Line: 01473 228270

[www.lighthousewa.org.uk](http://www.lighthousewa.org.uk)

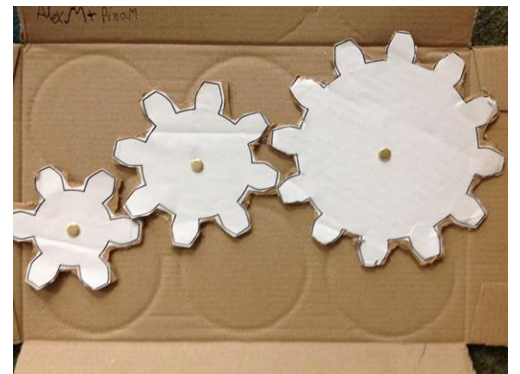
Registered Company No. 3532428 Registered in England  
Registered Company Address: Fitzroy House, Crown Street, Ipswich, IP1 3LG  
Registered Charity No. 1066296 – Affiliated to Women's Aid Federation England





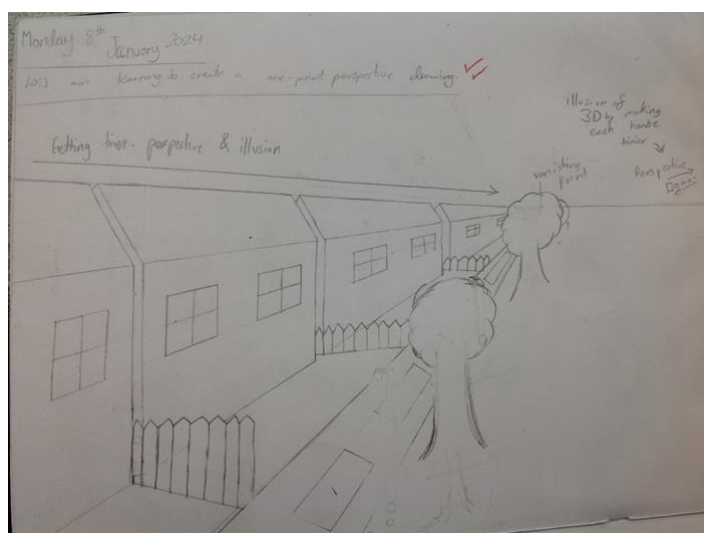
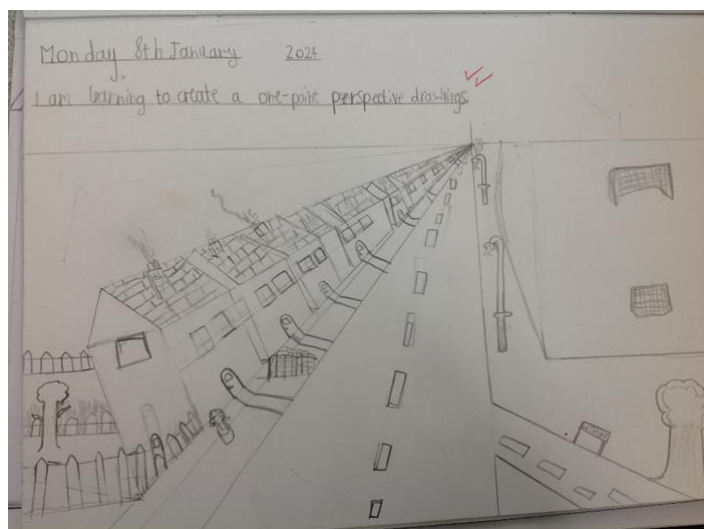
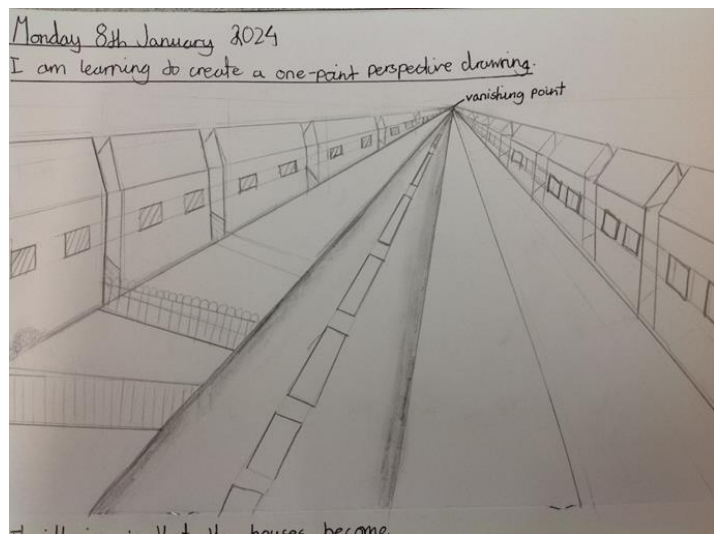
# SPOTLIGHT ON YEAR 6

Year 6 had a busy December. Not only getting into the Christmas spirit (see our lovely Christmas jumper day photo), but also working hard with their mechanisms in D.T. looking at pulleys and cogs. The children showed off some fantastic collaborative skills and had lots of fun too!

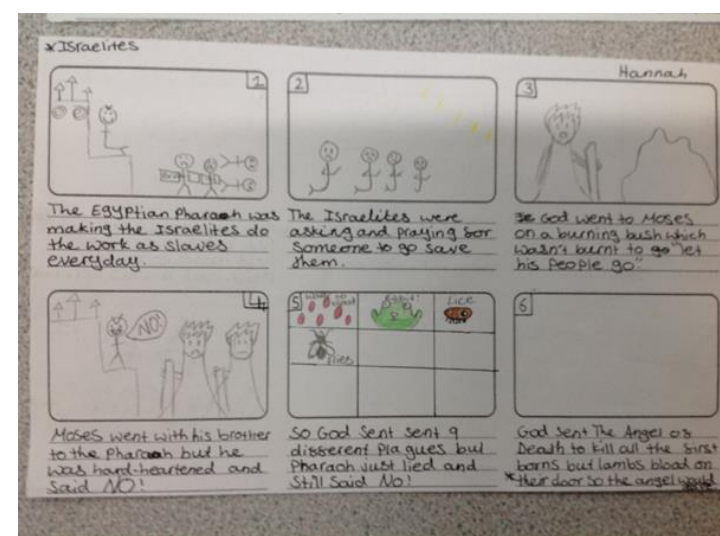
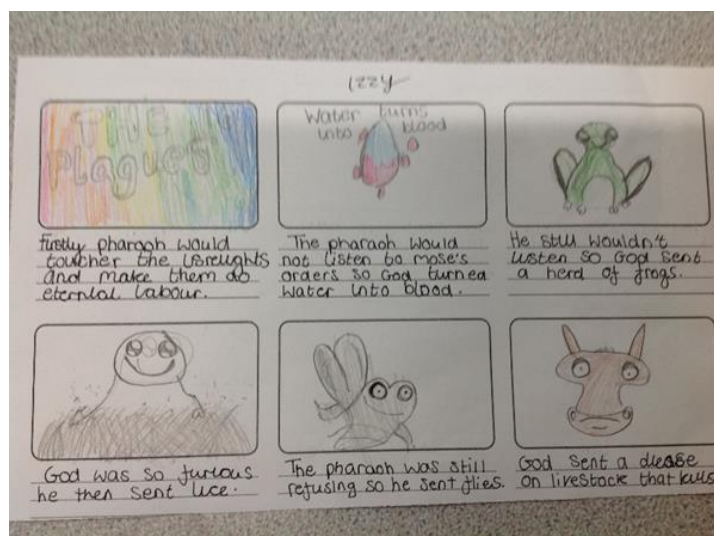




January has started well for Year 6 and they have come back eager and ready to learn. In Art, we have had our first lesson which focused on creating one-point perspective drawings. The children loved this and some even went home to have another go at it! Please see some of the fantastic outcomes from this lesson below.



In RE, we have started our new unit – Jesus Bread of Life – by looking at the story of Passover. The children have recreated this story in storyboard form and reflected on the significance of this story for people today.



## IN NEED OF SUPPORT?

Some sources of support are as follows:

<https://healthwatchesuffolk.co.uk/signposting/youngpeople/>

You can call Childline about anything on 0800 1111. There is the option to speak with one of its councillors. It also has plenty of information on its website, including information about Cyberbullying: <https://www.childline.org.uk/Children and Young People's Emotional Wellbeing Hub>

Information, advice and support for anyone concerned about the emotional wellbeing and mental health of a child or young person aged 0 to 25 years. Link above or call 0345 600 2090.

<https://www.youngminds.org.uk/>

Anyone can call Samaritans on 116 123. It does not matter how old you are or what is bothering you. [This page](#) on the Samaritans website tells you what to expect if you call them.

If you are concerned about an immediate risk to the safety of a child, please call Customer First on 0808 800 4005. In an emergency, call the Police on 999.

### Spring Term Dates

17th January – Year 6 SATs meeting

25th January – Class Mass Years 5 & 6

31st January – Curriculum Evening: Mathematics and Online Safety (CDN and AC)

5th February – Mental Health Week

6th February – E-Safety Day

15th February – KSI Lentern Service

16th February – Celebration Assembly

19th-23rd February – HALF TERM

26th February – PD Day (no pupils)

4th March – Book Week

11th March – Science Week

19th March – 3.30-6pm parents evening

21st March – 4.30-7pm parents evening

22nd March – 1.15pm KS2 reconciliation

28th March – Easter Liturgy

### Term dates for 2023 – 2024

#### Spring Term 2024

Thursday 4<sup>th</sup> January – Thursday 28<sup>th</sup> March

Half term: 19<sup>th</sup> – 23<sup>rd</sup> February

Staff Training day: 3<sup>rd</sup> January & 26<sup>th</sup> February

#### Summer Term 2024

Monday 15<sup>th</sup> April – Friday 19<sup>th</sup> July

Bank holiday: 6<sup>th</sup> May

Half term: 27<sup>th</sup> May – 31<sup>st</sup> May

Staff Training days: 12<sup>th</sup> April