



# St Mary's Newsletter

Issue 3

30<sup>th</sup> September 2022

St. Mary's Catholic Primary School, Woodbridge Road, Ipswich, IP4 4EU

<http://www.stmaryscatholicprimaryipswich.com>

## School Rules:

Be ready, Be respectful, Be safe

## Tweet of the Week

"Being a small flock, should not frighten us, but rather invite us to live this reality with faith, so that we can become leaven, salt and light for others, trusting in the action of the Holy Spirit, who blows freely where He wills."

*Pope Francis (@Pontifex)*



## St Mary's School Drivers



Whole Child

Community

Communication

Faith

WC 3<sup>rd</sup> October 2022

Tue 4<sup>th</sup> October: Yr5 Swimming

Tue 4<sup>th</sup> October: Orchestra – 3.30–4.15pm

Thu 6<sup>th</sup> October: Yr4 Parish Mass 9.15am in Church

Thu 6<sup>th</sup> October: Yr5 Class Mass 2.30pm in School

Dear Parent and Carers,

It was fantastic to welcome so many new faces to The Friends of St Mary's AGM on Wednesday evening. We would like to thank everyone for all their efforts fundraising for our school. Without your support we would not be able to enjoy our wonderful willow garden or pond area. If anyone missed the meeting and would like to join the FOSM please collect a registration form from the school office.

We wish Miss Southgate well as she takes part in the London Marathon this weekend, if you wish to donate please visit Miss Southgate's just giving page.

[https://www.justgiving.com/fundraising/Natalie-](https://www.justgiving.com/fundraising/Natalie-Southgate)

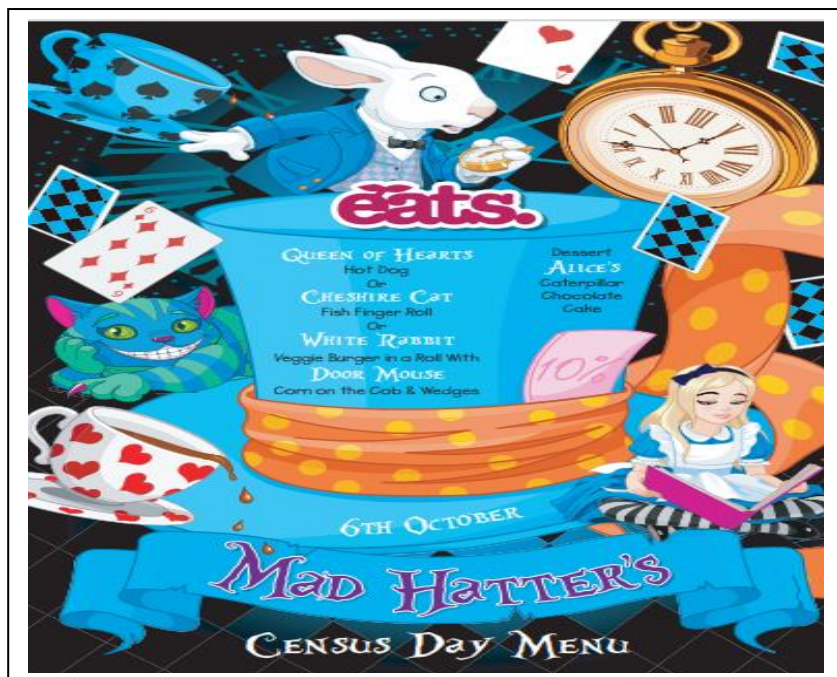
[Southgate?utm\\_source=offline&utm\\_medium=qr&utm\\_term=8d302d0854fa42f095cb67f1b6b93d14](https://www.justgiving.com/fundraising/Natalie-Southgate?utm_source=offline&utm_medium=qr&utm_term=8d302d0854fa42f095cb67f1b6b93d14)

Have a wonderful weekend  
Mrs Berry and Mrs Measham

**JustGiving™**

## CENSUS DAY THURSDAY 6<sup>TH</sup> OCTOBER 2022:

Our school census day will be held on Thursday 6<sup>th</sup> October and we need as many children to have a school meal that day as possible as the more we have the more funding the school receives from the DFE. We will be giving a meal to all children in Reception, Year1 and Year2 for them to try to see if they like school meals.



## RECEPTION SEPTEMBER 2023 APPLICATIONS:

We will be holding two open day sessions on November 16<sup>th</sup>, one at 9.30am and another at 1.30pm. If you are thinking of applying to St Mary's for a Reception place in September 2023, please email the school to book a slot.

Our email address is: [admin@st-marys-ipswich.suffolk.sch.uk](mailto:admin@st-marys-ipswich.suffolk.sch.uk)

Applications for a Reception September 2023 place should be made by the deadline date of 15<sup>th</sup> January 2023. The application should be made online via the Suffolk County Council Admissions website.

<https://www.suffolk.gov.uk/children-families-and-learning/schools/school-places/apply-for-a-primary-school-place-20232024/>

**IMPORTANT:** St Mary's require a completed Supplementary Information Form (SIF) which should be sent to the school before 15<sup>th</sup> January deadline please. The Supplementary Information Form (SIF) can be found on our website under 'Key Information - Admissions'



## HIGH SCHOOL APPLICATIONS FOR SEPTEMBER 2023:

Year 6, high school applications are now open and will close on 31<sup>st</sup> October 2022.

You need to apply directly to Suffolk County Council and remember to check if your new school requires a Supplementary information form (SIF), if needed, these should be sent direct to your chosen new school.

<https://www.suffolk.gov.uk/children-families-and-learning/schools/school-places/apply-for-a-secondary-school-place-20232024/>



## ELECTION OF PARENT GOVERNOR:



There are currently two places for Parent Governors on the Governing Body of your child's school, and a vacancy for one of these places has recently occurred. No special qualifications are needed and the most important thing is to have a keen interest in the school and be prepared to play an active part in the governing body's work. Attached with the newsletter is further information.

## HEALTHY LUNCHES:

We are a healthy eating school and would like to remind you that the children should only have 1 chocolate biscuit or small cake bar, no sweets, chocolate bars or lollies allowed.

Please could we also remind you that no products containing nuts should be in packed lunches due to allergies.

## FREE SCHOOL MEALS:

Your child will get free school meals if you receive any of the following:

- Income Support
- Income-based Job Seeker's Allowance
- Income-related Employment and Support Allowance
- Guarantee element of State Pension Credit
- Child Tax Credit but **no element of Working Tax Credit** and have an annual income (as assessed by HM Revenues & Customs) that does not exceed £16,190
- If you are supported under Part VI of the Immigration and Asylum Act 1999
- Working Tax Credit during the four-week period immediately after your employment finishes or after you start to work fewer hours per week
- Universal Credit (provided you have an annual net earned income of no more than £7,400 (£616.67 per month), as assessed by earnings from up to three of your most recent assessment periods).

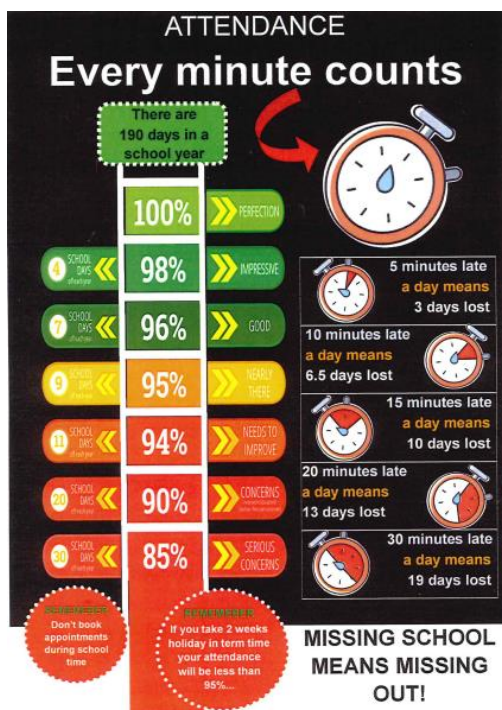


To check if your child is eligible, apply online:

<https://www.suffolk.gov.uk/children-families-and-learning/schools/school-meals-uniforms-and-trips/apply-for-free-school-meals/>



## ATTENDANCE:



Please take time to read and familiarise yourself with our Trust attendance policy. Please be aware that the school are unable to authorise holiday requests for absence during term time.

If you arrive after 8.50am please come to the office to sign the late book.

It is really important that you ensure your child arrives at school between 8:40 and 8:50am.

A late arrival after 8.50am means that the class has already started learning and this is disruptive for your child and others in the class.

[https://www.stmaryscatholicprimaryipswich.com/\\_site/data/files/policies/DO4-6258157B2B78BA94-74-9F6FB9079DE\\_.pdf](https://www.stmaryscatholicprimaryipswich.com/_site/data/files/policies/DO4-6258157B2B78BA94-74-9F6FB9079DE_.pdf)

## THOMAS THE TANK ENGINE:

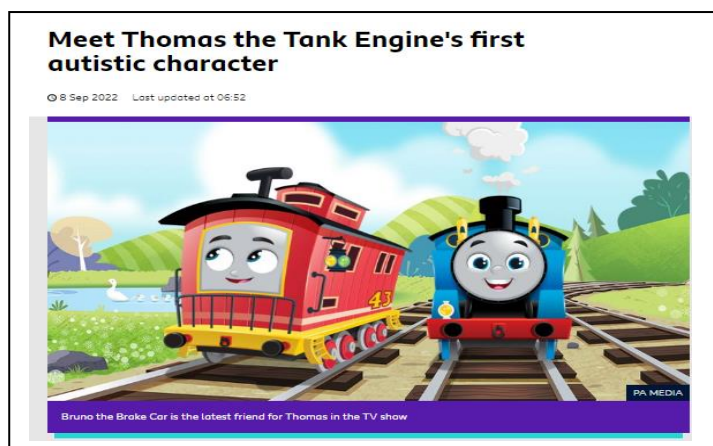
Say hello to Thomas the Tank Engine's first autistic character – Bruno the Brake Car!

Bruno is voiced by nine-year-old actor Elliot Garcia from Reading, who is also autistic.

The new character will start appearing in episodes of the latest 'Thomas & Friends: All Engines Go!' series later this month.

He'll be joining the iconic characters Percy – the saddle tank engine, Gordon – the big blue tender engine and of course, the legendary Thomas himself.

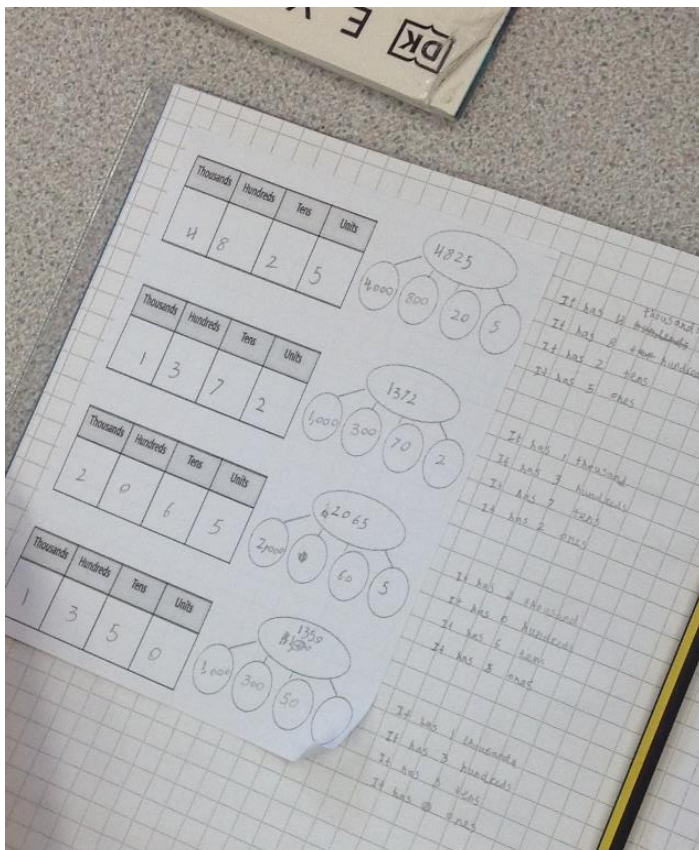
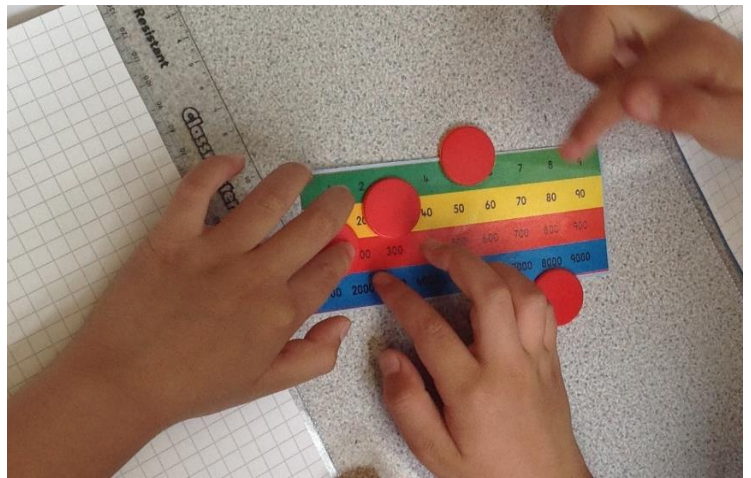
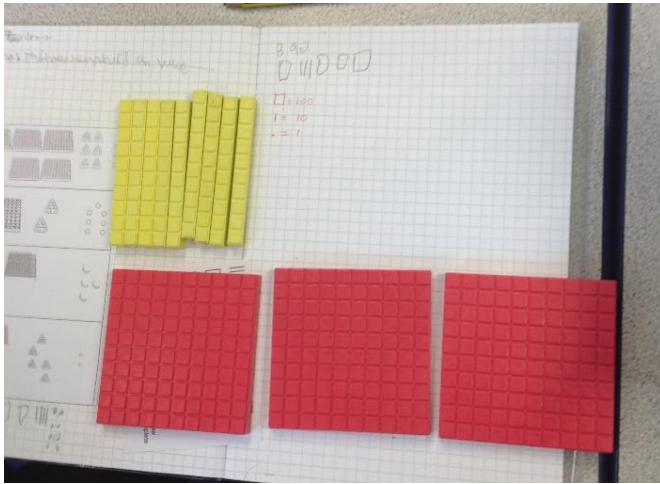
The read more, follow this link: <https://www.bbc.co.uk/newsround/62818670>





# SPOTLIGHT ON YEAR 4

The children in Year 4 have settled well into their new, year group and are already showing that they can follow class routines and display excellent behaviour for our learning.



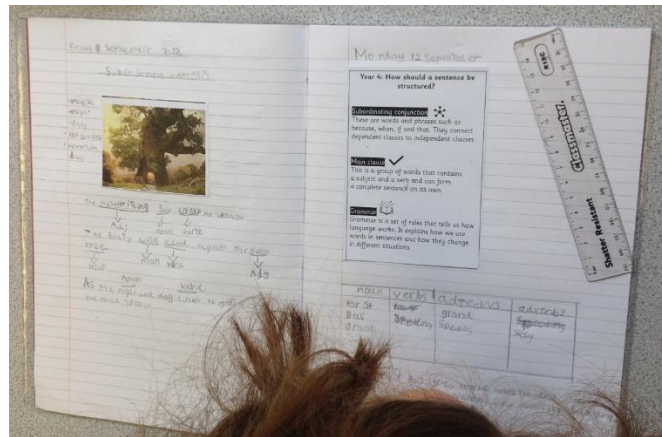
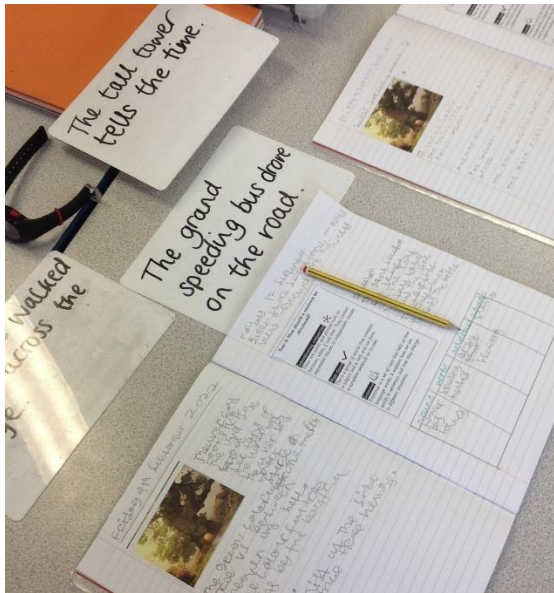
## Maths

In maths we have been exploring place value and number and working hard to set out our work correctly so that we can see the steps we have taken to solve mathematical problems. We have enjoyed experimenting using base 10 and Catteguo charts.



## English

We have started to explore our new English curriculum and started the term with re-visiting what strong sentences look like. We have been working hard to learn the grammatical structure and features required to write a 3<sup>rd</sup> Person Adventure story. We have also been concentrating really hard on the presentation of our written work as we all needed to improve (including, Mr. Bentley!)



## RE

Our learning in RE has been learning about The Bible and how this sacred text encourages us to follow the teachings of Jesus. We have learnt how to find stories in the Bible and have looked at the Story of Abraham and Moses.

We enjoyed acting out some of our favourite Bible stories in small groups.





## Art

In art we have been exploring with different mark making and understanding the terms contour and pattern. We have learnt to create effects to make 2D drawings appear 3D.



## TRUST JOB OPPORTUNITIES ADMINISTRATIVE ASSISTANT APPRENTICESHIPS:

Two opportunities have arisen to join Our Lady of Walsingham Catholic Multi Academy Trust as an Administrative Assistant Apprentice

**Role 1:** To provide administrative support to the CEO of the Academy Trust and support the work of the Executive Team and Trust Board. **Location:** Based in Trust offices in Ipswich and/or Newmarket with occasional meetings in other Trust schools and the flexibility to work from home on occasion.

**Role 2:** To provide administrative support to the of 6th Form Team at St Albans Catholic High School. **Location:** St Albans Catholic High School, 80 Digby Rd, Ipswich IP4 3NJ



The following terms relate to both roles:

**Hours:** 32 hours per week term time only, Monday to Friday. Release time as required to access ongoing Level 3 apprenticeship training with a nationally accredited provider.

**Salary Scale:** Point 5 £19,650 FTE. **Term:** 18 months fixed term apprenticeship contract.

These are new and exciting opportunities for an enthusiastic and motivated candidate to provide high quality administrative support whilst being able to continue to access ongoing Level 3 apprenticeship training.

Our Lady of Walsingham Catholic Multi Academy Trust is committed to safeguarding and promoting the welfare of children, young people and vulnerable adults and expects all staff and volunteers to share this commitment. An enhanced DBS check is required for all successful applicants.

For an application pack or to discuss the position, please contact Antoinette Jones on 01638 662719, email [a.jones@olow.org.uk](mailto:a.jones@olow.org.uk) or visit our website at <https://www.ourladyofwalsingham.co.uk/>

**Deadline for applications:** Midday on Thursday 13th October 2022

Applicants are advised to apply early as we reserve the right to hold interviews and close a vacancy prior to the published deadline.

### TERM DATES:

#### Term dates for 2022 – 2023

##### Autumn Term 2022

Monday 5<sup>th</sup> September – Friday 16<sup>th</sup> December

Half term: 24<sup>th</sup> – 28<sup>th</sup> October

Staff Training day: 1<sup>st</sup> & 2<sup>nd</sup> September

##### Spring Term 2023

Wednesday 4<sup>th</sup> January – Friday 31<sup>st</sup> March

Half term: 13<sup>th</sup> – 17<sup>th</sup> February

Staff Training day: 3<sup>rd</sup> January

##### Summer Term 2023

Tuesday 18<sup>th</sup> April – Thursday 20<sup>th</sup> July

Bank holiday: 1<sup>st</sup> May

Half term: 29<sup>th</sup> May – 2<sup>nd</sup> June

Staff Training days: 17<sup>th</sup> April, 21<sup>st</sup> July