



St Mary's Newsletter

Issue 9

29th January 2024

St. Mary's Catholic Primary School, Woodbridge Road, Ipswich, IP4 4EU

<http://www.stmaryscatholicprimaryipswich.com>

School Rules:

Be ready, Be respectful, Be safe

Tweet of the Week

"The evil spirit wants to "enslave our soul" and uses many "chains": dependencies, trends, consumerism, hedonism. Jesus came to free us: let us invoke Him!

May we never make a compromise with evil, but follow the One who gave His life for us.

#GospelOfTheDay"

Pope Francis (@Pontifex)

Week Commencing 29th January 2024

Wed 31st Jan: Curriculum Evening Online 6pm - Maths & Online Safety

Thurs 1st Feb: Year 6 Parish Mass 9.15am in Church

Parents/carers welcome

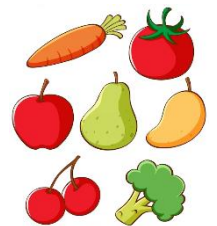
5th Feb: Mental Health Week

Tues 6th Feb: E-Safety Day

Dear Parents and Carers,

This week in collective worship we heard how the disciples dropped everything to follow Jesus. That Jesus invites us to leave our old ways behind us and follow Him. We have been thinking about how we can follow Jesus through our words and actions. Over the coming weeks let us all try to follow Jesus through kind words and actions to all those in our class, school and wider community.

At morning break all EYFS and KSI children are provided with fruit or vegetables for a morning snack. We would encourage KS2 to bring in a snack for morning break; this should be fruit or vegetables only. Crisps, cereal bars and cakes are not permitted at breaktime but can be enjoyed as part of a balanced packed lunch.



Warm Regards
Mrs Berry and Mrs Measham



Christ Jesus,
teach us how to be kind
and generous,
sharing what we have
with our friends, family
and people all over the world.
May we always listen to your word.

Amen.

SPORTS CLUBS SPRING TERM 2024

Mondays

Football Club (years 1, 2 & 3) 3.30-4.30pm. This club is full.

Wednesdays

Netball Club (years 5 & 6 girls) 3.30-4.15pm.

Football Club (years 4, 5 & 6 boys) 3.30-4.30pm.

Thursdays

Football Club (years 4, 5 & 6 girls) starts at 8am.

Fridays

Multisports Club (years 1, 2 & 3) starts at 8am. This club is full.

Handball & Dodgeball (KS2) starts at 12.10pm. This club is full.

Multisports Club (years 4, 5 & 6) 3.30-4.30pm. This club is full.



Please contact the School Office for further information.

MUSIC LESSONS

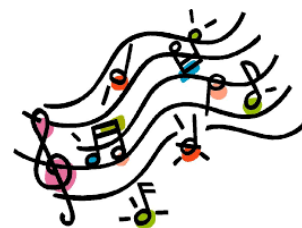
Reminder of days when pre-booked and pre-paid lessons take place.

Mondays - Violin

Tuesdays - Brass

Thursdays - Woodwind

Please encourage your children to remember their instrument!



RECRUITING FOR AN ADMIN ASSISTANT

£23,113- £23,893 pro rata, part time 22.5 hours per week, 38 weeks per year.

Wednesday 8.30am-1pm, Thursday and Friday 8am-17.30pm.

Closing Date - Friday 2nd February 2024. Interviews - WC 5th February 2024.

All applications will be assessed upon receipt and we reserve the right to interview and appoint prior to the closing date. An early application is therefore recommended.



LOST PROPERTY

Please can we remind parents to name all property, as it helps us to reunite lost items. We have a large selection of lost property in the Office, which you are welcome to sort through! All lost property not collected by Friday 16th February will be donated to the PTA and the charity box.



CAR PARK ETIQUETTE

We are fortunate in that we have use of a school and church car park. Can we please politely remind parents/carers to drive carefully and park considerately to keep our children safe.

READY TO LEARN

William Shakespeare wrote "Better three hours too soon than a minute too late." While we don't expect our children to arrive in the early hours of the morning, please ensure that they are in the playground at 8.40am for when the bell rings. The roads are busy in Ipswich but perhaps leave a few minutes early to account for this. A late arrival after 8.50am means the class has already started and this is disruptive for your child and others in the class. Please remind children to come equipped for the day.



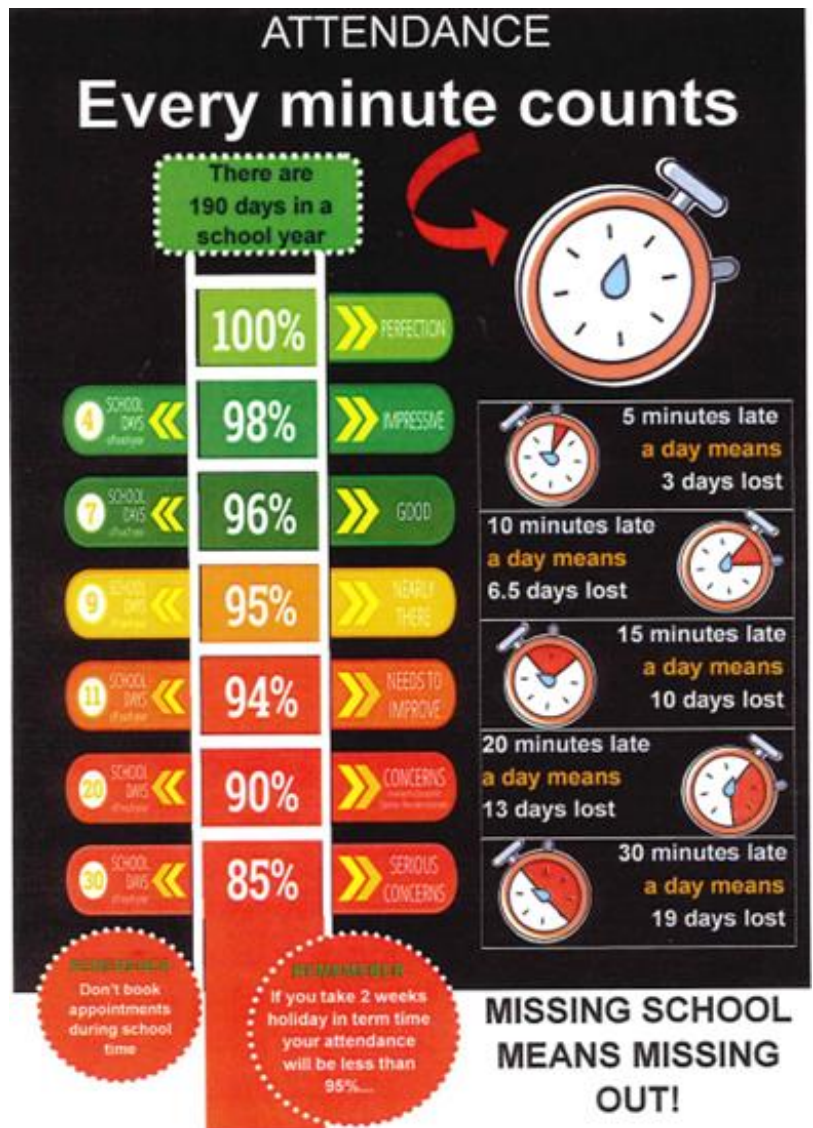
If your child is ill, please leave a message on the School Absence Line (01473 728372) before 8am, or send an email to: admin@st-marys-ipswich.suffolk.sch.uk We do ask that all children who have been sick or had diarrhoea remain at home until 48 hours after the last episode of sickness or diarrhoea. Please try to make appointments outside of school hours, however, for unavoidable medical appointments we do request notice in advance.

ATTENDANCE

Please take time to read and familiarise yourself with our Trust Attendance Policy: [Attendance Policy](#)

Please be aware that the school is unable to authorise holiday requests for absence during term time.

If you arrive after 8.50am, please come to the Office to sign the late book. It is really important that you ensure your child arrives at school between 8:40 and 8:50am.



WEATHER



Despite the weather getting colder we will hopefully still go outside for breaktime. Please ensure your child comes to school with a warm coat and gloves (plus a hat and scarf if they wish). Thank you.

JEWELLERY IN SCHOOL:

Just a reminder that the wearing of jewellery is not permitted (apart from ear studs). If ear studs are worn, these will need to be removed before coming into school on PE days or covered using micropore tape please. Thank you for your ongoing co-operation.

SENDIASS are hosting a session for parents, carers and young people about the Learning Disability Annual Health Check.

Ace Anglia's Peer Educators will explain all about the Learning Disability Annual Health Check and listen to your experiences.

February 3 10:30 - 11:30
Saturday 3rd February 2024
10:30am to 11:30am

March 20 7:00 - 8:00
Wednesday March 20th 2024
7:00pm to 8:00pm

Join our interactive session by signing up at:
<https://bit.ly/AHC-Session>

We will cover:

- How to prepare for the annual health check?
- Reasonable Adjustments
- What happens during the annual health check?
- What happens after the annual health check?
- A chance to talk about good or bad experiences
- A chance to share ideas for making experiences better
- Useful easy read resources
- The Learning Disability Liaison Nurses

For more information about learning disability annual health checks contact daisy@aceanglia.com



Multiply Suffolk delivers an integrated system of wellbeing, skills and employability, embedding numeracy with clear pathways of support pre- and post-employment. The team are currently working with parents/carers/guardians in the school environment, to support them understand their children's homework and to have a better understanding of what is currently being taught in schools. Further information can be found at: Multiply_Suffolk



SPOTLIGHT ON YEAR 5

Year 5 have started the new year with a very positive attitude. We wish Miss Godbold a wonderful maternity leave and welcome Mrs Veitch back to St Mary's.

Art

The pupils have focused on the works of textiles artist, Lesley Richmond. Richmond uses a combination of man-made and natural materials on her canvases. The pupils went on a scavenger hunt, collecting leaves and twigs which they then weaved on to a cardboard base.



R.E.

We have been studying and reciting the eight Beatitudes from the Book of Matthew. The children listened to stories about significant Catholics who represented each Beatitude. This included Edith Stein, Josephine Bakhita and Saint Leopold. The pupils engaged in debate, stating which individual they found the most inspirational and why.



Science

The pupils have begun their new unit on forces. They learnt about friction, why it happens, as well as when it is helpful and unhelpful. We then put theory into practice! The children were challenged to move jelly cubes across a paper plate. They then observed what happened once olive oil was added. We concluded that oil provides less friction, hence allowing the jelly to move more freely.

P.E.

Year 5 have thoroughly enjoyed their lessons with Mr Hurd so far. He has organised a carousel of activities, enabling the pupils to develop their netball skills. We hope to do a class match very soon!



IN NEED OF SUPPORT?

Some sources of support are as follows:

<https://healthwatchesuffolk.co.uk/signposting/youngpeople/>

You can call Childline about anything on 0800 1111. There is the option to speak with one of its councillors. It also has plenty of information on its website, including information about Cyberbullying: <https://www.childline.org.uk/Children-and-Young-People's-Emotional-Wellbeing-Hub>

Information, advice and support for anyone concerned about the emotional wellbeing and mental health of a child or young person aged 0 to 25 years. Link above or call 0345 600 2090.

<https://www.youngminds.org.uk/>

Anyone can call Samaritans on 116 123. It does not matter how old you are or what is bothering you. [This page](#) on the Samaritans website tells you what to expect if you call them.

If you are concerned about an immediate risk to the safety of a child, please call Customer First on 0808 800 4005. In an emergency, call the Police on 999.

Spring Term Dates

17th January – Year 6 SATs meeting
25th January – Class Mass Years 5 & 6
31st January – Curriculum Evening: Mathematics and Online Safety (CDN and AC)
5th February – Mental Health Week
6th February – E-Safety Day
15th February – KSI Lentern Service
16th February – Celebration Assembly
19th-23rd February – HALF TERM
26th February – PD Day (no pupils)
4th March – Book Week
11th March – Science Week
19th March – 3.30-6pm parents evening
21st March – 4.30-7pm parents evening
22nd March – 1.15pm KS2 reconciliation
28th March – Easter Liturgy 9am in church

Term dates for 2023 – 2024

Spring Term 2024

Thursday 4th January – Thursday 28th March
Half term: 19th – 23rd February
Staff Training day: 3rd January & 26th February

Summer Term 2024

Monday 15th April – Friday 19th July
Bank holiday: 6th May
Half term: 27th May – 31st May
Staff Training days: 12th April