



St Mary's Newsletter

Issue 9

18th November 2022

St. Mary's Catholic Primary School, Woodbridge Road, Ipswich, IP4 4EU

<http://www.stmaryscatholicprimaryipswich.com>

School Rules:

Be ready, Be respectful, Be safe

Tweet of the Week

"Each and every person is needed in order for the journey of fraternity and peace to progress. Let us all hear the call to expand our horizons to open our hearts because we are all brothers and sisters."

Pope Francis (@Pontifex)



Week Commencing 21st Nov:

21st Nov: Year 4 Class Mass – 2.45pm

22nd Nov: Curriculum Evening Remote 6–7pm

Link: <https://meet.google.com/sam-onfb-wgv>

22nd Nov: Book Share – 3.30 – 3.50pm in classrooms

SCHOOL SURVEY:

If you haven't already done so, please complete the school survey. It should take less than 5 minutes.

The deadline for completing the survey is at 5pm on Friday 25th November.

We will use the results of this survey to inform further development of the school. If you have more than one child at school, please choose just 1 child to complete this form for.

<https://forms.gle/wq4Dzkcb88PmvR7a6>

SAFEGUARDING NOTICE:

Please keep everyone safe by following the signs to enter the car park. When leaving the car park, please stop at the exit gates, to allow parents and children to pass, before driving on. Thank you.

RECEPTION SEPTEMBER 2023 APPLICATIONS: Applications for a Reception September 2023 place should be made by the **deadline date of 15th January 2023**. The application should be made online via the Suffolk County Council Admissions website. <https://www.suffolk.gov.uk/children-families-and-learning/schools/school-places/apply-for-a-primary-school-place-20232024/>

IMPORTANT: St Mary's require a completed Supplementary Information Form (SIF) which should be sent to the school before 15th January deadline please. The Supplementary Information Form (SIF) can be found on our website under 'Key Information - Admissions'

REMINDER:

Due to allergies, please **do not bring any nut items** into school. Please check package ingredients. Also, please cut grapes in half lengthwise (can be a choking hazard). Thank you for your co-operation.

CHRISTMAS GIFTS ETC:

If you are making purchases using Amazon, please log in via Amazon Smile UK and select 'St Mary's Parent & Teacher Association' making sure it is Ipswich. This will generate donations to the FOSM at no extra cost to yourselves. Thank you.



MORNING MILK:

If your child has turned 5 they are no longer eligible for free morning milk. It is not compulsory to have milk but if you wish to register and pay for milk please google 'Cool Milk Parents' and follow the link. Thank you.

CHRISTMAS EVENTS

**** PLEASE EMAIL YOUR CHILD'S CHRISTMAS LUNCH CHOICES ASAP. THANK YOU.**

CHRISTMAS LUNCH TUESDAY 13TH DECEMBER:

This year's school Christmas Lunch will be on Tuesday 13th December for all children from Reception to Year 6.

A Parentmail was sent on 9/11/22, the deadline to order a Christmas lunch is Thursday 24th November 2022. Please email your child's choices to the school office
admin@st-marys-ipswich.suffolk.sch.uk



RECEPTION NATIVITY – 'A KING IS BORN' – MONDAY 5TH DECEMBER AT 2.30PM:

Parents will receive two tickets per family. Please can all children come into school on 5th December wearing plain black leggings/ jogging bottoms and either a plain black or plain white T-shirt. Thank you.

KS1 NATIVITY – 'BORN IN A BARN' – 6TH DECEMBER AT 2.30PM:

Parents will receive two tickets per family. Please can all children come into school on 6th December wearing plain black leggings/ jogging bottoms and either a plain black or plain white T-shirt. Thank you.

KS2 NATIVITY – 'SUPERSTAR' – 14TH DECEMBER AT 2PM AND 15TH DECEMBER AT 9AM.

Parents will receive two tickets per family, 1 for each performance.

We will be recording the Reception, KS1 and KS2 Nativities. They will be shared via Google classroom before we break for Christmas. Thank you.



All tickets will be sent home 1 week before each of the plays.

CHRISTMAS ENSEMBLE:

Please join us in church on Friday 16th December at 9.15am and hear our beautiful Christmas Ensemble.



EXTRA BANK HOLIDAY MAY 2023:

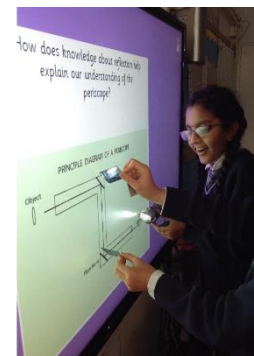
School will be closed on Monday 8th May 2023 for the bank holiday to celebrate His Majesty's coronation on 6th May 2023.



SPOTLIGHT ON YEAR 6

Year 6 have been working really hard this half term already. We have enjoyed celebrating our class mass and attending the remembrance service at the war graves in the cemetery. Please read on to see the fantastic work we have been doing in our lessons.

In science, we started our new topic and explored these key questions: How does light travel? What colour is light made of? Reflection – how does light help us to see objects?



In Art we have started our unit on Painting and Collage. In these pictures we are repeating an image we have chosen and are using one colour and changing the shade and tint of this colour using white and black to fill in all the areas created by drawing multiples images of the same design – this is us attempting to replicate cubism.



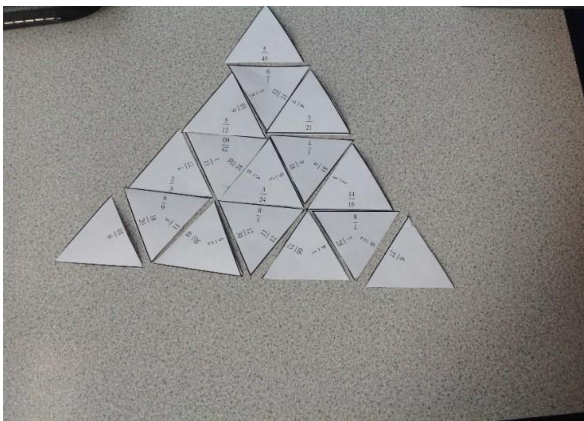
In PSHE this week, for Anti Bullying week, we undertook some role plays – making sure we could identify who played different roles in the bullying situation.

We then reflected on these scenarios and discussed how the different people could reach out (this year's theme)

Finally we chose whether we wanted to create a poem or a poster to reflect these ideas.



In maths this half term, we have moved on to our fraction unit. In these pictures we are extending our thinking by completing an equivalent fraction tarsia.



FOSM

Hamper raffle -

Christmas update from the Friends of St Mary's team:



Thank you all for your generous donations this week. We're very grateful to everyone who brought in items for the hampers. The PTA Christmas elves will be taking them home this weekend, and will work to produce some lovely festive hampers to raffle off. We are hoping to offer a couple of large luxury grand prize hampers, and then a few more mid sized hampers in order to offer more people the chance to win this year.



Hamper raffle tickets will be sent home with the eldest child in each family today. There is no pressure to buy. If required, extra tickets can be requested via your class rep. The draw will take place at our Christmas event on Friday, December 2nd and tickets will be sold there too.



This year, the Christmas fair will take place in the school hall directly after school. It will run from 3:30pm till 5pm and everyone is welcome. We will be offering refreshments, activities and games for the children, stalls for adults and children to browse, and potentially a story time with Santa and his elf in the library.

- We would love your help with this. If you have any time between now and then to help with planning, or can help on the day any chunk of time between 2:30 and 5:45, please sign up via volunteersignup.org/A3KE9 , email friendsofstmarysipswich@gmail.com, or let your class rep know.
- This is the first time we have run a Christmas indoor event on school premises, so it is a learning curve for us. We will have access to an outdoor area so that the hall does not exceed capacity. We've taken the decision to limit requests for donations this year, meaning we won't be offering a cake stall or bottle tombola.
- However, we will be happy to accept anything that anyone may wish to freely donate. Good quality toys, games and gifts are always well received. We will leave a box outside the office for these. If anyone is keen to bake, we would be delighted to offer (for example) slices of cake, mince pies, biscuits, sausage rolls to buy as refreshments. Please just let us know in advance if you want to do this - friendsofstmarysipswich@gmail.com so we know what to expect and can ensure proper handling and storage.
- We will keep prices and costs low so everyone can have a good time and the children can spend their pennies. The children in multi sports club can hopefully join us for half an hour once it ends, and the children in after school club will be able to attend also. Please do come along if you can, we promise it will be a delightful start to December!

Christmas fun day – The ever-popular Christmas Fun Day returns for its third year, held on Christmas dinner day which is **Tuesday 13th December**. FOSM will provide Christmas crafts, games and other fun, classroom gifts and a dress down day (festive colours/ Christmas jumpers / sparkles / headbands all encouraged but please, no need to buy anything new)! This will all be contained during the school day.



FOSM will ask for voluntary donations where families are able to do so and will provide a go fund me link nearer the time, and a morning bucket collection. All children will be included regardless of donations, so please only contribute what you can afford. We wouldn't want to miss an opportunity for fundraising, as every penny counts, but please don't worry if you aren't in a position to donate.

Thanks from the FOSM PTA team

Term dates for 2022 – 2023

Autumn Term 2022

Monday 5th September – Friday 16th December

Half term: 24th – 28th October

Staff Training day: 1st & 2nd September

Spring Term 2023

Wednesday 4th January – Friday 31st March

Half term: 13th – 17th February

Staff Training day: 3rd January

Summer Term 2023

Tuesday 18th April – Thursday 20th July

Bank holiday: 1st May & 8th May

Half term: 29th May – 2nd June

Staff Training days: 17th April, 21st July