



St Mary's Newsletter

Issue 4

7th October 2022

St. Mary's Catholic Primary School, Woodbridge Road, Ipswich, IP4 4EU

<http://www.stmaryscatholicprimaryipswich.com>

School Rules:

Be ready, Be respectful, Be safe

Tweet of the Week

"In the school of the Virgin Mary, let us treasure in our hearts the joyful, luminous, sorrowful and glorious mysteries of the Lord Jesus so as to become faithful disciples like her."

Pope Francis (@Pontifex)



WC 10th October 2022

Tue 11th October: Yr5 Swimming

Tue 11th October: Orchestra – 3.30-4.15pm

Thu 13th October: Yr5 Parish Mass

Thu 13th October: Harvest Festival 2.30pm in Church

Dear Parent and Carers,

Thank you for all of your ongoing support with sending your children to school in the correct uniform. This really does help to create the right attitude for learning. As the colder weather approaches we thought it might be useful to remind you of our expectations around additional layers of warmth. If students are cold they may wear an additional undergarment, underneath their school shirt if needed. Our branded school jumper must be worn cardigans and hoodies are not part of our school uniform.

We ask that all pupils have a warm, weatherproof coat for outdoor wear as break and lunchtimes are spent outdoors.

Please remember that we have second hand uniform for sale by our FOSM, you can email at

friendsofstmarysipswich@gmail.com

Have a wonderful weekend

Mrs Berry and Mrs Measham

OPEN DAY 16TH NOVEMBER 2022:

We will be holding two open day sessions for perspective parents on November 16th, one at 9.30am and another at 1.30pm. If you are thinking of applying to St Mary's for a Reception place in September 2023, please email the school to book a slot. Our email address is: admin@st-marys-ipswich.suffolk.sch.uk



RECEPTION SEPTEMBER 2023 APPLICATIONS

Applications for a Reception September 2023 place should be made by the deadline date of 15th January 2023. The application should be made online via the Suffolk County Council Admissions website.

<https://www.suffolk.gov.uk/children-families-and-learning/schools/school-places/apply-for-a-primary-school-place-20232024/>

IMPORTANT: St Mary's require a completed Supplementary Information Form (SIF) which should be sent to the school before 15th January deadline please. The Supplementary Information Form (SIF) can be found on our website under 'Key Information - Admissions'

HIGH SCHOOL APPLICATIONS FOR SEPTEMBER 2023:

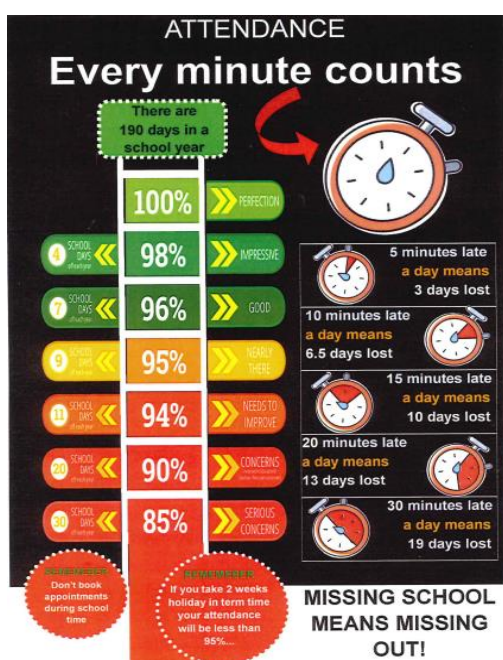
Year 6, high school applications are now open and will close on 31st October 2022.

You need to apply directly to Suffolk County Council and remember to check if your new school requires a Supplementary information form (SIF), if needed, these should be sent direct to your chosen new school.



<https://www.suffolk.gov.uk/children-families-and-learning/schools/school-places/apply-for-a-secondary-school-place-20232024/>

ATTENDANCE:



Please take time to read and familiarise yourself with our Trust attendance policy. Please be aware that the school are unable to authorise holiday requests for absence during term time.

If you arrive after 8.50am please come to the office to sign the late book.

It is really important that you ensure your child arrives at school between 8.40 and 8.50am.

A late arrival after 8.50am means that the class has already started learning and this is disruptive for your child and others in the class.

https://www.stmaryscatholicprimaryipswich.com/_site/data/files/policies/D046258157B2B78BA94749F6FB9079DE.pdf

SENDIASS SESSION FOR PARENTS AND CARERS:



How do I make and keep friends as an autistic child/young person> (60 mins)

Date: Saturday 8th October 2022 10am -11am Online

<https://www.eventbrite.co.uk/e/how-do-i-make-and-keep-friends-as-an-autistic-childyoung-person-60-min-tickets-148348984807>

YEAR 4 SOUP KITCHEN – THURSDAY 13TH OCTOBER:

As their fundraising activity Year 4 would like to invite you to a Soup Kitchen in the school hall on Thursday 13th October, after the Harvest Festival Mass. 3.30pm onwards in the Hall.

We have been learning about what goes into our food and trying out recipes for bread and soup. We'd love to share this learning with you and raise some funds at the same time.

For a minimum £1 donation you can buy a cup of home (or school!) made soup and a roll. Funds raised will benefit the charity CAFOD who work hard here and abroad to support those in need.

We look forward to seeing you in the Hall on Thursday 13th October. All welcome – children and parents/carers.

Year 4 and the Fundraising Committee



HARVEST FESTIVAL THURSDAY 13TH OCTOBER 2022 AT 2.30PM IN CHURCH:

You are invited to join us in church on Thursday 13th October at 2.30pm to celebrate our Harvest Festival.

We will be collecting donations until Tuesday 11th October.

- Long Grain Rice
- Long life whole milk
- Toiletries for men/ women/ children
- Soup
- Coffee
- Sugar
- Jam
- Tinned vegetables, meat fruit/ desserts
- Fresh food (Cheese/ butter)



CHRISTMAS ENSEMBLE PRACTICE YR4, YR5 & YR6:

Christmas Ensemble performance will take place on the last day of term, Friday 16th December. Children in years 4, 5 and 6 are welcome to take part by either singing or playing their instruments, rehearsals will start on Tuesday 18th October at 8.15am in the hall.





SPOTLIGHT

ON YEAR 3

It has been a busy start to the term! Year 3 have been working hard and are starting to settle into the KS2 routines.

The pupils have taken their roles as "Learning Detectives" very seriously, praising their peers when they have displayed the St Mary's Learning Behaviours. We have focused specifically on being **Active listeners**, **Empathetic** and **Collaborative**.

Science

Our topic this half term is **Rocks**. The class have been budding geologists, identifying and classifying different igneous, sedimentary and metamorphic rocks. The pupils have also gained much confidence explaining how these rocks are formed and how they change over time. They will use this scientific knowledge to write a non-chronological report over the coming weeks.

History

The children have begun history lessons by learning about the periods of the Stone Age. Can they tell you what Palaeolithic, Mesolithic and Neolithic mean?

R.E

In R.E, Year 3 have focused on the importance of the Christian Family. Inspired by John Everett Millais' oil painting **The Holy Family**, the children used drama to explore the feelings and thoughts of Jesus' family. "I know my son will do great things one day," replied one pupil, playing the role of Mary.



D&T

Year 3 kick started their topic by finding different ways of making a box like structure out of cloth. They experimented different ways to stiffen the cloth using a range of solutions.



Geography

In geography, children enjoyed using compasses to learn the points of the compass. They have also used maps and thought about the different physical and human features in the UK.

P.S.H.E

Children have been learning about what it means to be healthy and have designed their own balanced meal.

Art

The children have thoroughly enjoyed their Art lessons with Miss Mudd. They explored the works Van Gough, using techniques of sgraffito and tonking to texture the surface of their paintings.



P.E.

Children have been developing their team work skills through handball and tag rugby. Last week they also had turns to referee tag rugby mini games.



YEAR6 HOUSE CAPTAINS:

Meet our Year 6 House Captains.

After a very close application process and vote, we are pleased to announce our school house captains for this academic year.



Harry and Angela; Nikita and Mila; Meghan and Danielle; and Amanda and Daanya.

TERM DATES:

Term dates for 2022 – 2023

Autumn Term 2022

Monday 5th September – Friday 16th December

Half term: 24th – 28th October

Staff Training day: 1st & 2nd September

Spring Term 2023

Wednesday 4th January – Friday 31st March

Half term: 13th – 17th February

Staff Training day: 3rd January

Summer Term 2023

Tuesday 18th April – Thursday 20th July

Bank holiday: 1st May

Half term: 29th May – 2nd June

Staff Training days: 17th April, 21st July