



St Mary's Newsletter

Issue 1

20th September 2024

St. Mary's Catholic Primary School, Woodbridge Road, Ipswich, IP4 4EU

<http://www.stmaryscatholicprimaryipswich.com>

School Rules:

Be ready, Be respectful, Be safe

Week Commencing 23rd September 2024

Tues 24th Sept: Year 5 Swimming

Fri 27th Sept: Schools Mass at Norwich Cathedral (Year 6)

Tweet of the Week

"When we make space for the Lord, we are able to open ourselves to all of Creation and to every creature. We then understand that life is a gift from the Father, who loves us deeply and desires that we belong to Him and to one another.

#SeasonOfCreation."

[Pope Francis \(@Pontifex\)](#)

Dear Parents and Carers,

It is wonderful to have all the children back in school for another academic year and to welcome our new Reception children to St Mary's. It was lovely to see so many of you at the Meet the Teacher meetings and Phonics workshop; we look forward to seeing you in school assemblies and other events.

We have been lucky with the weather so far but the days can be chilly so please ensure that a coat is in school.

Warm Regards,
Mrs Berry and Mrs Measham

LATEST PARISH NEWSLETTER

To read the newsletter for our parish church of St Mary's, please visit [St Marys Catholic Parish 24th week of the year](#)



READY TO LEARN

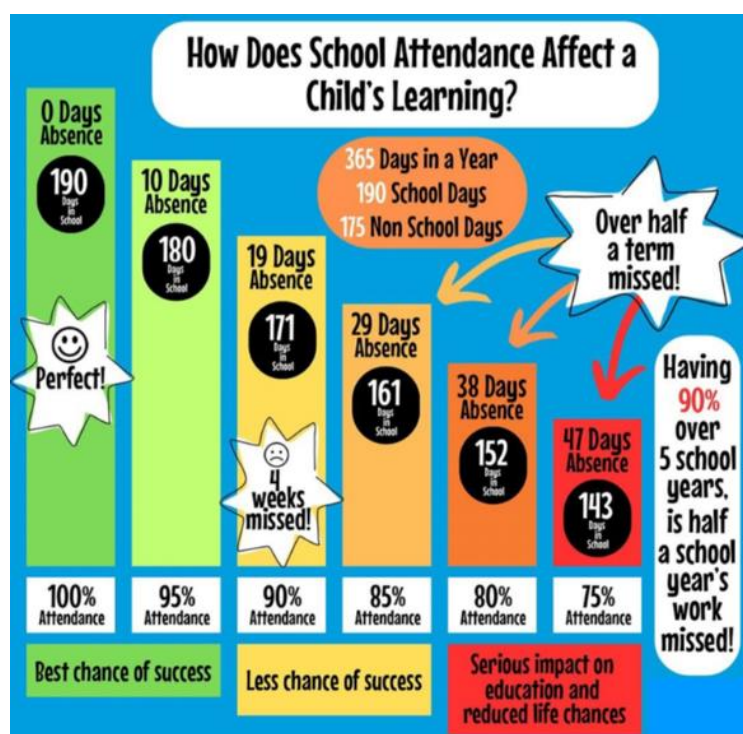
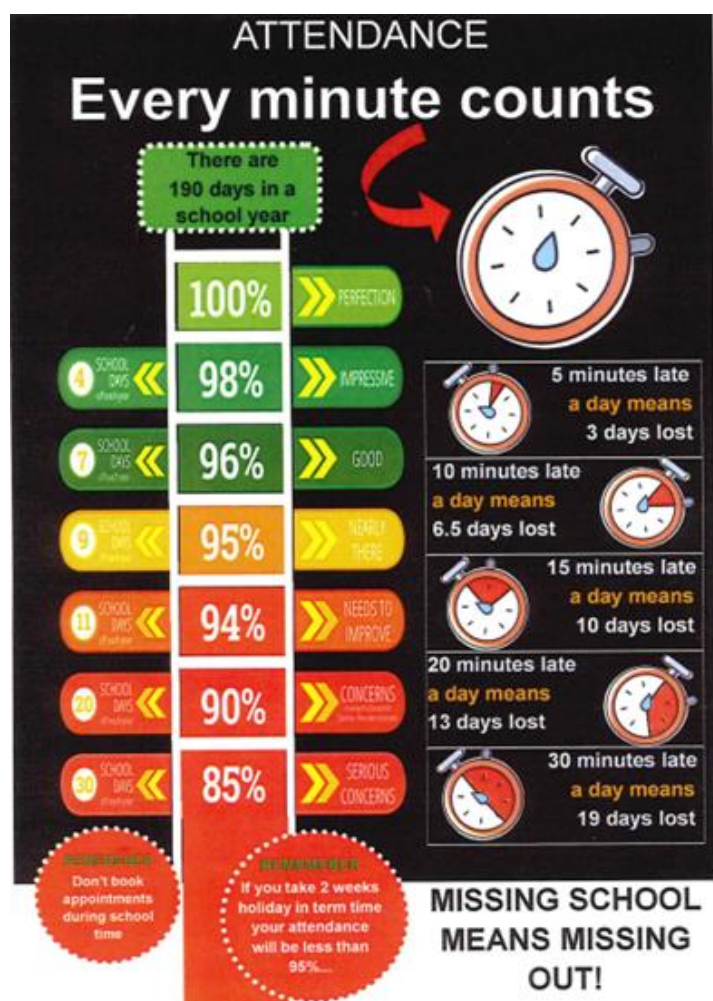
Please ensure that children are in the playground at **8.40am** for when the **bell rings**. The roads are busy in Ipswich but perhaps leave a few minutes early to account for this. A late arrival after 8.50am means the class has already started and this is disruptive for your child and others in the class. If your child arrives after 9.10am, they will be marked as unauthorised absence for the morning. Please remind children to come equipped for the day.

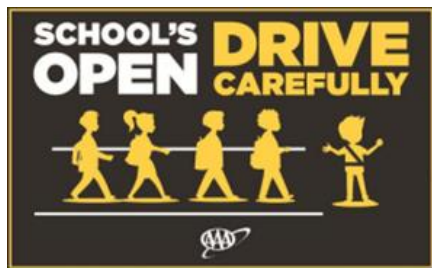


If your child is ill, please leave a message on the School Absence Line (01473 728372) before 8am, or send an email to: admin@st-marys-ipswich.suffolk.sch.uk You should report every day of your child's absence. We do ask that all children who have been sick or had diarrhoea remain at home until 48 hours after the last episode of sickness or diarrhoea. Please try to make appointments outside of school hours, however, for unavoidable medical appointments we do request notice in advance.

ATTENDANCE

Please take time to read and familiarise yourself with Our Lady of Walsingham Trust Attendance Policy. Link: [Attendance Policy](#) **Please be aware that the school is unable to authorise holiday requests for absence during term time.**





CAR PARKING

We are fortunate to have use of a school and church car park. Can we please politely remind parents/carers to drive carefully and park considerately to keep our children safe. Please promptly vacate the car park to allow others to find a space and kindly do not block the entrance or exit.

The roadway beyond the school is **PRIVATE** and **parking is not permitted**. Please be considerate of our local neighbours and do not block driveways or park on double yellow lines. Thank you for help and understanding.

A campaign graphic for 'Think before you park'. It features a cartoon child on a scooter. A speech bubble from the child says 'Think before you park'. Below this is a blue banner with white text: 'POOR AND INCONSIDERATE PARKING CLOSE TO SCHOOLS CAN PLACE CHILDREN AT RISK'. Underneath is a red banner with white text: 'DO NOT PARK ON THE FOLLOWING'. Below the red banner are several icons representing prohibited parking areas: a yellow sign with '8 am - 6 pm' and a right arrow, a yellow sign with 'No stopping Mon - Fri 8 am - 5 pm on entrance markings', a yellow 'BUS STOP' sign, a yellow 'L' shaped sign, a yellow 'SCHOOL' sign with 'KEEP CLEAR' markings, a yellow 'PERMIT HOLDERS ONLY' sign, and a yellow double yellow line. At the bottom, text says 'To report problem parking, scan the QR code' with a red arrow pointing to a QR code. Below this is a red warning: 'Failure to follow these rules may result in a Penalty Charge Notice being issued.' and a blue line: 'Please park safely and be considerate of others.' The hashtag '#thinkb4upark' is at the bottom left, and the Ipswich Borough Council logo is at the bottom right.

NO PHONES ON SCHOOL PREMISES

Can we please kindly request that parents/carers do not use mobile phones anywhere on the school premises (including the playground) due to safeguarding concerns. Many thanks for your support.



FREE SCHOOL MEALS

Your child will get free school meals if you receive any of the following:

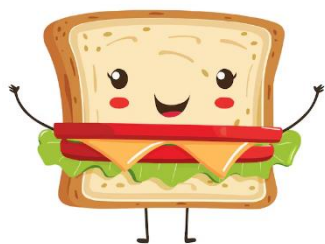
- Income Support
- Income-based Job Seeker's Allowance
- Income-related Employment and Support Allowance
- Guarantee element of State Pension Credit
- Child Tax Credit but no element of Working Tax Credit and

have an annual income (as assessed by HM Revenues & Customs) that does not exceed £16,190

- If you are supported under Part VI of the Immigration and Asylum Act 1999
- Working Tax Credit during the four-week period immediately after your employment finishes or after you start to work fewer hours per week
- Universal Credit (provided you have an annual net earned income of no more than £7,400 (£616.67 per month), as assessed by earnings from up to three of your most recent assessment periods).

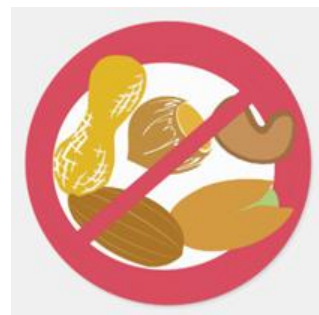


To check if your child is eligible, apply online: <https://www.suffolk.gov.uk/children-families-and-learning/schools/school-meals-uniforms-and-trips/apply-for-free-school-meals/> or call 0345 606 6067 for advice.



HEALTHY LUNCHES:

We are a healthy eating school and would like to remind you that the children should only have a chocolate biscuit or small cake bar, no sweets, chocolate bars or lollies are allowed. Please can we also remind everyone that we are a **nut-free school**. Please do not send any types of nuts to school, including food containing them (ie nut butters, Nutella and cereal-bars). We do have children with allergies. Many thanks for helping to keep



everyone safe.

KS2 PAYING FOR SCHOOL MEALS

A polite reminder that school meals should be paid for in advance. Please make sure that your child's lunch account is in credit.



COOL MILK

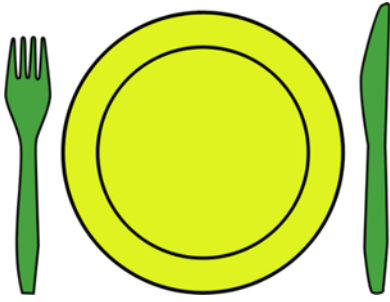
If your child is older than 5 but you would like to pay for them to receive a morning glass of milk (current price 31 pence per day), you can register using the link and pay Cool Milk. coolmilk.com



PARENT/CARER COMMUNICATION

Can parents/carers please ensure that you are signed up to our communication and data system, Arbor. It is very important that everyone is able to access this system, which is our primary means of communicating important information. Arbor is also used to handle payments for school meals, wraparound, clubs and trips. If you are having difficulty, please email the School Office:

admin@st-marys-ipswich.suffolk.sch.uk



CENSUS DAY THURSDAY 3RD OCTOBER 2024

Our school census day will be held on Thursday 3rd October. We need as many children to have a school meal that day as possible please, as the more we have the more funding the school receives from the Department for Education. Please see below menu - wedges will be served instead of skinny fries.



CONTACT INFORMATION

It is extremely important to notify us of any change of contact details as and when they occur. You can request updates to be made directly via Arbor, or email the school office: admin@st-marys-ipswich.suffolk.sch.uk

Please also notify us if your child is diagnosed with a new medical condition, or if their current condition has changed (i.e. different medication). We will shortly be sending out data collection sheets, to confirm if the details which we currently hold are correct. Many thanks for your co-operation



APPLICATIONS FOR SECONDARY SCHOOLS

SEPTEMBER 2025

Secondary school applications (for those children currently in year 6, going into year 7 in September 2025) are now open and will close on **31st October 2024**. You need to apply directly to Suffolk County Council and remember to check if your new school requires a Supplementary Information Form (SIF); if needed, these should be sent direct to your chosen new school.

<https://www.suffolk.gov.uk/children-families-and-learning/schools/school-places/apply-for-a-secondary-school-place-2025-2026>



APPLICATIONS FOR RECEPTION CLASS SEPTEMBER 2025



Applications for a place in the Reception class for September 2025 should be made by the deadline date of **15th January 2025**. The application should be made online via the Suffolk County Council Admissions website

<https://www.suffolk.gov.uk/children-families-and-learning/schools/school-places/apply-for-a-primary-school-place-2025-2026>

IMPORTANT: St Mary's requires a completed Supplementary Information Form (SIF) which should be sent to the school before the 15th January deadline please. The Supplementary Information Form (SIF) can be found on our website under Key Information - Admissions

St Alban's
Catholic High School





Open Mornings

An opportunity to visit and experience the school as a live, learning environment, see our outstanding facilities and talk with key staff members.

Monday 30th September and Tuesday 1st October 2024
9.15am – 10:25am

To book a tour please visit our website
www.st-albans.suffolk.sch.uk/transitiontohighschool





St Alban's is part of the
Our Lady of Walsingham
Catholic Multi-Academy Trust

St Alban's Catholic High School
Digby Road, Ipswich, IP4 3NJ
Telephone **01473 705266**
@StAlbansHigh
stalbanhigh ipswich

JOB VACANCIES

Effective as soon as possible, we have vacancies in school for midday supervisors to help with our busy lunchtimes during term time. The hours are 11.40am - 12.50pm (70mins per day); five days per week. The current hourly rate is £11.98 for 38 weeks per year (plus 5 weeks paid holiday). This is an excellent opportunity to get paid experience of working in a school. If you would like to know more or know of someone who would like this role, please email: admin@st-marys-ipswich.suffolk.sch.uk



THRIVE

Thrive offers a free programme for Suffolk residents looking for support to get into, or progress in work.

Dependent on location, Anglia Care Trust or Access Community Trust will listen to your goals and assess your needs, creating a personalised support and advice programme. Additional support will be delivered by Suffolk New College, East Coast College or

West Suffolk College. Working together, they provide the support, skills, information and advice to enable every adult to thrive.

Access Community Trust (East Suffolk and West Suffolk District areas): thrive@accessct.org or 01502 527200 (option zero)

Anglia Care Trust (Ipswich and Babergh and Mid Suffolk District areas): thrive@angliacaretrust.org.uk or 01473 622 888

Please register as early as possible to secure your place as these are subject to availability. For more information please visit: <https://www.suffolk.ac.uk/about/projects-innovation/thrive/>



DYSLEXIA AWARENESS

The SpLD Service will be holding special events during Dyslexia Awareness Week, 7th-11th October 2024, including:

Signs that your child may have dyslexia (Virtual): Tuesday

8th October 2024 (1.30pm-2.15pm)

What can I do if my child is finding it difficult to read and write? How can I support them?

[Click here to book](#)

BIKEABILITY CYCLE TO SCHOOL WEEK

Bikeability is asking children and their parents or carers to make a pledge as part of Cycle to School week which is taking place from Monday 23rd to Friday 27th September.

There are a number of pledges to choose from, including cycling to school every day during Cycle to School Week, swapping one car journey for cycling, discovering somewhere new on your bike or going on a bike ride with your family. You'll get a great activity pack once you make a pledge plus you'll be entered into the prize draw to win a Squish children's bike worth £329! <https://www.bikeability.org.uk/cycletoschoolweek/>





Special Educational Needs
and Disability Information,
Advice & Support Service

sendiass

SEN support in schools

SENDIASS is offering a relaxed online session for parents and carers explaining the process of support in schools for pupils with special educational needs (SEN).

The session will explore:

- The key principles of SEN support and whole-class approaches
- The 4 stages of the graduated approach of support and how you and your child or young person are involved
- Examples of different kinds of SEN support and approaches for working with schools
- What happens if a child needs more support.

25th September 2024 10am – 11:30am

[Click here to register](#)

What parents have said about our SEN sessions:

'Extremely informative and helpful. Thank you so much!'

'Really helpful, particularly the opportunity to ask questions.'

'Very clear and easy to understand – helped me feel a lot more confident.'

[Click here to register](#)



Special Educational Needs
and Disability Information,
Advice & Support Service

sendiass

Working with Schools

SENDIASS is offering a relaxed online session for parents and carers exploring solution focussed approaches for working with schools.

This will include exploring practical strategies to prepare for and manage meetings and conversations with settings around your child's special educational needs.

Because of the interactive nature of this session, we don't have a pre-recording to send to parents who register. We will instead send the slides and additional resources which we refer to.

30th September 2024 10am – 12 noon

[Click here to register](#)

'Great session – very helpful ideas😊'

'Loved the real examples and interactive sections!'

'Very informative and enjoyable.'

[Click here to register](#)



Special Educational Needs
and Disability Information,
Advice & Support Service

sendiass

SEN support in early years settings

SENDIASS is offering a relaxed online session for parents and carers explaining the process of early years support for pupils with special educational needs (SEN).

The session will explore:

- Key principles of SEN support and early assessment
- Whole group inclusive approaches
- The graduated approach to SEN support and how families are involved
- What happens if a child needs more support
- Support for children with medical needs and disabilities

2nd October 2024 6pm – 7:30pm

[Click here to register](#)

What parents have said about these SEN sessions:

'Extremely informative and helpful. Thank you so much!'

'Really helpful, particularly the opportunity to ask questions.'

'Very clear and easy to understand – helped me feel a lot more confident.'

[Click here to register](#)



Special Educational Needs
and Disability Information,
Advice & Support Service

sendiass

EHC needs assessments

SENDIASS is offering an online session explaining Education, Health and Care (EHC) needs assessments. This session was co-produced separately with parents and practitioners, and both are welcome to book.

The session will explore:

- The purpose and threshold of an EHC needs assessment and when one might be requested.
- A family's options if they receive a refusal to assess.
- What happens if an EHC needs assessment is agreed and how families are involved.
- What happens at the end of the process.

Everyone who books will be sent a pre-recording of the session and links to a suite of additional resources.

9th October 2024 6pm – 7:30pm

[Click to register](#)

What parents and practitioners have said about this webinar -

'Highly recommend!' 'This has been so useful!'

'Really clear and concise. Fantastic resource materials too!'

[Click here to register](#)

SPORTS CLUBS AUTUMN TERM 2024

Mondays

Football Club (years 4, 5 & 6 boys) 3.30-4.30pm.

No club on 4th Nov (PD Day)

Wednesdays

Multisports Club (years 1, 2 & 3) starts at 8am. **THIS CLUB IS FULL**

Netball Club (years 5 & 6 girls) 3.30-4.30pm.

Thursdays

Football Club (years 4, 5 & 6 girls) starts at 8am.

Fridays

Handball & Dodgeball (years 4, 5 & 6) starts at 12.10pm.

Multisports Club (years 4, 5 & 6) 3.30-4.30pm.



If you wish to enquire if space is still available, please contact the School Office: admin@st-marys-ipswich.suffolk.sch.uk

MUSIC LESSONS

Reminder of days when pre-booked and pre-paid lessons take place.

Mondays - Violin

Wednesdays - Brass

Thursdays - Woodwind

Please encourage your children to remember their instrument!

C H E S S B E N E F I T S

Problem-solving
Decision-making
Focus & Concentration
Time Management
Make Friends
Game/Sport for Life



Suffolk Junior Chess

JOIN A CLUB

suffolkjuniorchess.org



Bury St Edmunds - Friday
Ipswich - Saturday
Online - Wednesday
School Chess Clubs

For all levels & abilities
suffolkjuniorchess@gmail.com

LEARN BASICS

Leagues & Tournaments

FRIENDLY GAMES

Prizes & Awards

COACHING

Puzzles

SPECIAL EVENTS

Child and Adolescent Mental Health Parent Workshops

NHS
Norfolk and Suffolk
NHS Foundation Trust

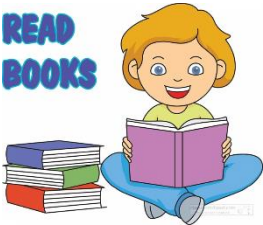
Upcoming virtual workshops:

- Anxiety
- Big feelings
- Low mood
- Sleep
- Emotion regulation
- Eating difficulties



Book onto a free workshop here: www.nsft.uk/workshops

**READ
BOOKS**



BOOKTRUST

Visit the BookTrust website for 'Starting school or nursery: 5 top tips and 10 books to try'.

BookTrust



CONGRATULATIONS TO MRS SNOWDEN!

Welcome to the world, Harry and Lily Snowden, born on 29th August weighing 5lb and 8oz and 4lb and 8oz. Mum and babies doing well and are back at home with Dad and Jack.



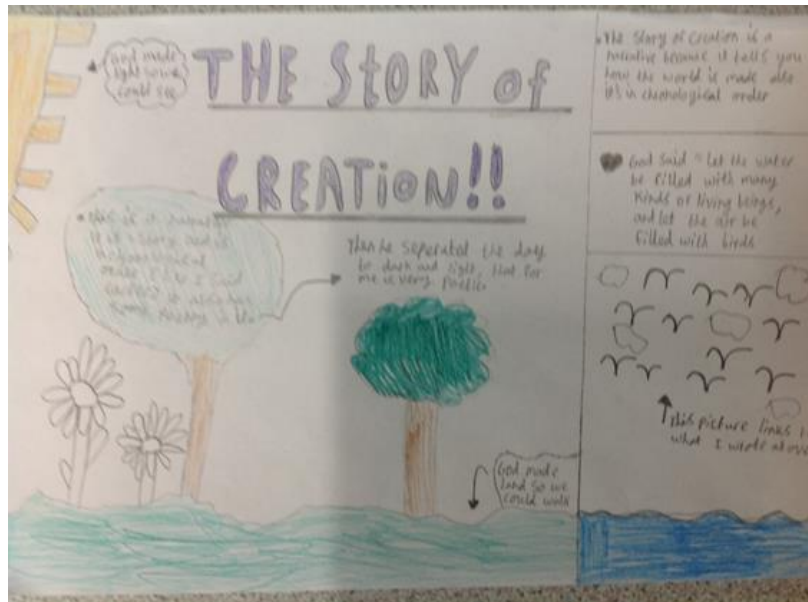
SPOTLIGHT ON

YEAR 6

Year 6 have had a busy start to the new term. They have really impressed me with their learning behaviours and how keen and interested they are in their learning. Please see below for some of things we have been up to.

R.E.

In R.E., we have started off our new curriculum topic of Creation and Covenant by looking at scripture passages. We decided what literary form they were in: narrative, poetic or prophecy. The children then worked in pairs to create posters showing this. See below for their ideas.



SCIENCE

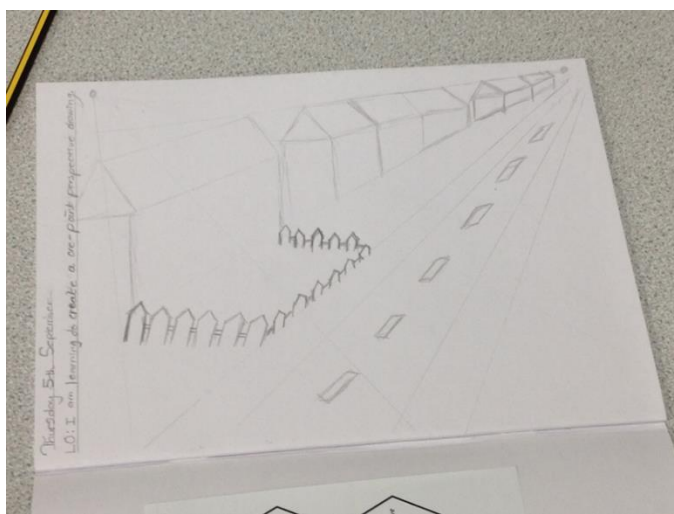
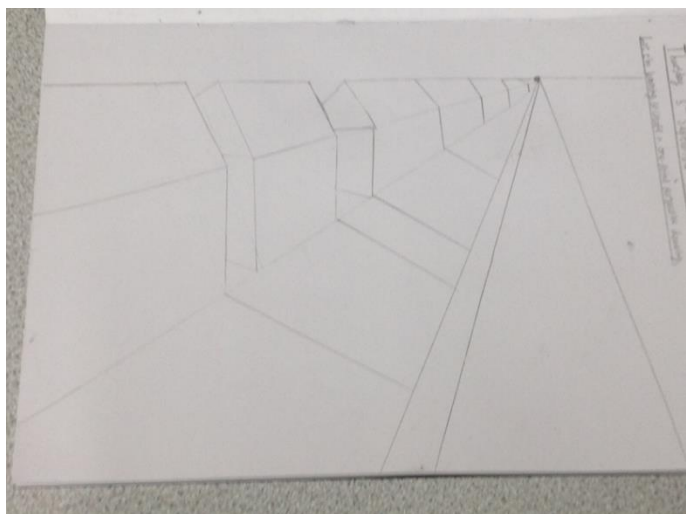


In Science, we have been looking at static electricity as a lead in to our topic on electricity. The children used balloons to produce a charge and had to explain what was happening through words and diagrams. A lot of fun was also had!



ART

In art, we have been looking at creating drawings with perspective and have focused on the vanishing point. These drawings will later form our prints that we will go on to make.



PE

We had a very successful PE lesson revising our hockey skills. Please see below some of our skills in action.





Suffolk NDD Advice and Guidance Service

We put children, young people and families first.
Need to be heard? We're listening.

If you live in Suffolk and need advice or guidance around NDD, please contact:
www.barnardos.org.uk and search for services in Suffolk, or scan the QR code below to complete our enquiry form and we will contact you.

BARNARDOS

Barnardo's Registered Charity Nos 216250 and SC037605. 24745AM24



Barnardo's Emotional Wellbeing Support Services Helpline

We put children, young people and families first.
Need to be heard? We're listening.

For emotional wellbeing information, signposting, resources and support within East and West Suffolk. Call the Barnardo's Helpline Advisors on 03456 00 20 90 and press option 1. We are available Monday - Friday, 9am - 5pm

BARNARDOS

Barnardo's Registered Charity Nos 216250 and SC037605. 24745AM24



NSPCC LISTEN UP, SPEAK UP



It takes a village to raise a child. And it takes a community to keep children safe.

That's why the NSPCC is encouraging every adult in the UK to take their 10-minute digital training and learn how to listen up and speak up for children.

Listen up, Speak up will show you:

- *some signs a child might be at risk, and steps you can take to help
- *how to approach difficult conversations to help keep children safe
- *who you can contact if you're ever concerned about a child or their family.

Follow this link: [NSPCC Listen up, Speak up 10-minute Training](#)

Worried about a child?

If you're worried about a child, even if you're unsure, contact the NSPCC Helpline to speak to a counsellor. Call us on 0808 800 5000, or email help@nspcc.org.uk

IN NEED OF SUPPORT?

Some sources of support are as follows:

<https://healthwatchesuffolk.co.uk/signposting/youngpeople/>

You can call Childline about anything on 0800 1111. There is the option to speak with one of its councillors. It also has plenty of information on its website, including information about Cyberbullying:

<https://www.childline.org.uk/>

[Children and Young People's Emotional Wellbeing Hub](#)

Information, advice and support for anyone concerned about the emotional wellbeing and mental health of a child or young person aged 0 to 25 years. Link above or call 0345 600 2090.

<https://www.youngminds.org.uk/>

Anyone can call Samaritans on 116 123. It does not matter how old you are or what is bothering you. [This page](#) on the Samaritans website tells you what to expect if you call them.

If you are concerned about an immediate risk to the safety of a child, please call Customer First on 0808 800 4005.

In an emergency, call the Police on 999.

Term dates for 2024 – 2025

Autumn Term 2024

Wednesday 4th September – Friday 20th December

Half term: 28th October – 1st November

Staff Training day: 2nd September, 3rd September &
4th November

Spring Term 2025

Tuesday 7th January – Friday 4th April

Half term: 17th February – 21st February

Staff Training day: 6th January

Summer Term 2025

Wednesday 23rd April – Tuesday 22nd July

Bank holiday: 5th May

Half term: 26th May – 30th May

Staff Training day: 22nd April