

Newsletter

Issue 6

8th October 2021

St. Mary's Catholic Primary School, Woodbridge Road, Ipswich, IP4 4EU
<http://www.stmaryscatholicprimaryipswich.com>

School Rules:
Be ready, Be respectful, Be safe

Tweet of the Week

If peoples are to remain brothers and sisters,
prayer must rise unceasingly to Heaven, and one
single word constantly echo on earth: peace.

[Pope Francis \(@Pontifex\)](#)



Key Dates w/c: 11th October 2021
11th Oct: Yr5 Swimming 8.30am
12th Oct: Yr5 Parish Mass 9.15am
13th Oct: Harvest Festival in Church 2.30pm
14th Oct: Rec, Yr1, Yr2 & Yr3 Tennis
14th Oct: Yr5 & Yr6 Marcel Workshop

Dear Parents and Carers,

It was fantastic to see so many new faces today at our FOSM KSI coffee afternoon. We really hope you enjoyed getting to know some of the other parents. Friends of St Marys raise vital money for the school. Soon will be able to fully open our Willow Garden. Without the money raised by our parents this would not have been possible. IF you can spare any time to get involved with FOSM please do get in touch.

Don't forget the FOSM Virtual General Meeting will be held on Monday 11th October at 7.30pm via Zoom

Meeting ID: 716 5293 8424

Passcode: AGM2021

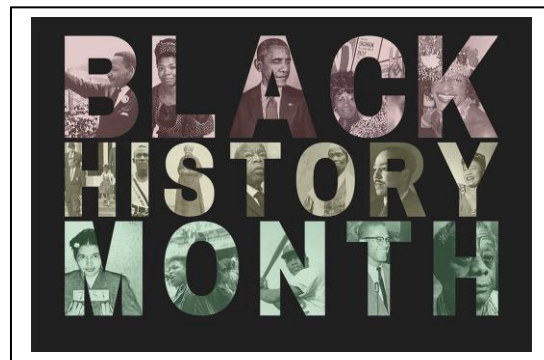


Have a wonderful weekend

Mrs Berry and Mrs Measham

Celebrating Black History Month:

During the month of October we will be celebrating Black History Month. It is an opportunity to celebrate the outstanding contributions that Black people have made to British society, whether that be today or historically. Children throughout the school will be taking part in assemblies and a variety of lessons across the curriculum to develop their understanding.



The time is always right to do the right thing – Dr. Martin Luther King Jr

Reception 2022/2023:

The application portal is now open with Suffolk County Council for parents to apply for their child's Reception class for children starting school in September 2022/2023.

We require a Supplementary Information Form, completed and returned to the school office at before the deadline date of 15th January 2022. Any SIF's received after this date will be dealt with as a late application.

Open Days for Reception 2022 Parents:

We will be holding an open morning on 3rd November at 9.15am and an Open afternoon on 4th November at 1.30pm. Please book an appointment for one of these dates with the school office. Each session will be restricted to 15 adults and only 1 adult per family will be permitted.



Year 6 High School Transfer – Admissions 2022/2023:

The application portal is now open with Suffolk County Council for parents to apply for current year 6 High School Place for September 2022/2023, the deadline for applications is 31st October 2021.

Please check the High School you wish to apply to, to see if they require you to complete a Supplementary Information Form. Completed SIF's will need to be returned to your chosen school by the closing date 31st October 2021.

Dates for your diary:

12th October: Year 5 Parish Mass 9.15am

13th October: Harvest Festival in Church 2.30pm

14th October: Years 5 & 6 – Marcel/O Generator Music Tech Workshop

14th October: Reception, Yr1, Yr2 & Yr3 Tennis – Please come to school in your PE Kits

15th October: Year 3 Trip to Christchurch Mansion

19th October: Year 6 Parish Mass 9.15am

20th October: Year 3 Class Mass 2.30pm

21st October: Year 4 Book Sale after school

22nd October: Celebration Assembly 9am in the school hall

12th November: Year 5/West Stow Anglo Saxon Village (the children will require a packed lunch and water please)

29th November: Year 6/Ipswich Museum (the children will require a packed lunch and water please)



Wrap Around Care:

Wrap around care has begun and we wanted to remind families that it is available to you all, it is flexible each week with no commitment to use all the time. The school are committed to running the care for a full year before a decision is made on the future of the provision.

If you wish to book a space please return a completed booking form to the school office by 2pm every Friday. Payments will need to be made by in advance of care for your child to attend.

Reminders:

Long hair should be tied back for the school day. If your child has PE please remove earrings before coming to school or cover them with microtape. Thank you.

Packed lunches should contain only one item of either a small cake, a biscuit or chocolate bar alongside their sandwich/roll. Also, please check that there are no nut ingredients included in any packed lunch items. Thank you.

Named Items:

Please make sure that all items, jumpers, lunch boxes, wattle bottles, book bags, that belong to your child have their names clearly printed in them so we can return lost items to the correct owner. We have many children looking for their lost unnamed items that we are unable to reunite them with promptly.



Reception:

Reception this week we have been continuing with our theme of houses and homes. We have been looking at the story of the Three Little Pigs in detail. The children are able to retell the story using actions and without the book. In provision the children have been exploring using different building materials to make different houses, we have even had a couple of castles this week too!



Year 1:

As part of Black History month the children in year 1 have been learning about Rosa Parkes. We boarded our virtual bus and the children who were given bibs were told that they could only sit on the brown seats and the back and had to give up their seat for children who did not have a bib. We then talked about how those children with a bib had felt. They shared that they had felt sad, cross and embarrassed.

Year 2:

In Science, Y2 were looking at different materials and whether they could be recycled or not. We sorted the materials into our 'bins' and discussed why some objects can't be recycled.



Year 3:

In year three, we are proudly displaying our cave paintings. We used a technique called tonking: gently blotting painted areas with a scrunched-up paper towel to reveal new marks. We restricted our use of colour, using charcoal and burnt sienna to accurately emulate the earthy tones of the cave paintings of Lascaux.

The whole class have worked with enthusiasm and should be able to tell you what was used to create cave paintings. Well done year 3!



Year 4:

Year 4 had a brilliant afternoon taking part in a "museum visit" in the classroom. They used their knowledge of Sumerian life to design a writing tablet, grind barley, create art in the Sumerian style, make research notes and practise the skills of the archaeologist discovering artefacts. Good job team.



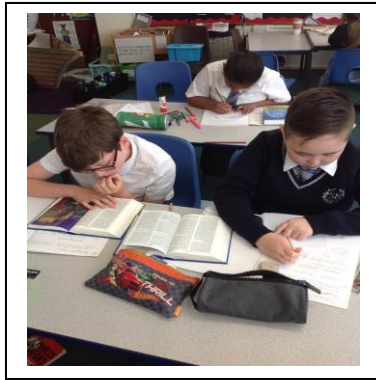
Year 5:

In Year 5 we have been learning about how information is transferred over the internet. We had fun taking on the role of computers and routers to help us to understand this process. We learnt that information is transferred in 'packets' and learnt about the importance of IP addresses. Most of the messages reached their destinations!



Year 6:

This week in R.E Year 6 were reflecting on The Parable of the Three Servants Matthew 25: 14-26. The children thought long and hard about what this meant and were able to think about the talents they have and how best to put them to good use. They also picked out 4 key Kingdom values to show how at school and at home they live out these values. A lovely session looking at the children and their own lives. Well done, Year 6!



Year 6 Mrs Dyer

Sadly year 6 have had to miss out on a couple of sports clubs so some arrived bright and early for some team games followed by a croissant!



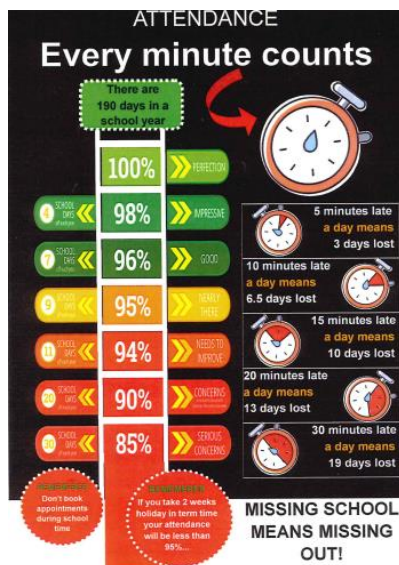
School Games Girls Football Tournament:

After lots of chopping and changing because of the circumstances, we got a girls team to the tournament and all of them thoroughly enjoyed it.

Although they lost 3 their matches 2-0, the year 4 and 5 girls were competing against all year 6 teams! They all worked so hard and were unlucky not to at least get a draw in there. Well done girls! All of you played with a smile on your face and with great spirit and effort.



Attendance:



St Mary's Preschool Open Afternoon:

Is your child aged 2-4 years old and looking for childcare, have you thought about St Mary's Preschool, they are holding an open afternoon for you to come along and have a play and look around the setting. St Mary's Preschool is located in the church hall across the road from school, it is open every day Monday to Friday.

St Mary's Preschool
322 Woodbridge Road
Ipswich, IP4 4BD

OPEN AFTERNOON
Wednesday 13th October
12.30pm - 1.30pm

Come and look around our setting
Meet our friendly team
View our facilities and let the children play

St Mary's Pre-school
 st_marys_preschool322

CONTACT US:
Phone - 01473 807252
Email - deputystmaryspreschool@gmail.com

FOSM:

Don't forget to dial in to the Friends of St Mary's PTA Annual General Meeting on Monday 11th October at 7:30pm

It will be held virtually on Zoom, these are the login details:

Meeting ID: 716 5293 8424

Passcode: AGM2021

We will be talking about how the money raised has been spent, what everyone thinks the school might need, and making plans for the coming year.

We would love to hear your input, but you're equally welcome to dial in and stay on mute. Looking forward to seeing lots of you there.

Best wishes Marge Jessop (chair)

Please join our school lottery by searching 'your school lottery', pressing 'buy a ticket' and then typing in 'St Mary's Ipswich'. Here are the answers to some frequently asked questions:

Who runs the lottery? - 'Your school lottery' does. This is an independent company that runs school lotteries across the country. It's all online and remotely drawn so it's very fair and transparent.

Is it COVID secure? - yes. They administer the funds and payments are made electronically direct to them, same with prizes but the other way round, so there's no cash handling or payments going in and out of school.

What's the commitment? - It's £1 a week. Minimum period is one month so you can change your mind easily. You may choose either direct debit or debit card.

What's the breakdown of the money I'm spending? -

Of every £1 :

- 40p goes directly to St Mary's (via PTA)
- 30p goes towards guaranteed local prizes
- 6p makes up the £25,000 jackpot
- 24p covers the company admin costs and VAT.

How likely am I to win something? -

Every week a St Mary's player (someone who has signed up via the St Mary's link) is guaranteed a prize.

You also enter the national draw to potentially win a £25,000 jackpot.

So each week the prizes are :

£25,000 (one national prize won by anyone)

30% of school takings (local prize guaranteed to be won by someone from our school)

When's the draw? Weekly on a Saturday at 8pm.

Term Dates:

Term dates for 2021 – 2022

Autumn Term 2021

Wednesday 01st September – Friday 17th December

Half term: 25th – 29th October

Staff Training day: 01st September

Spring Term 2022

Tuesday 4th January – Friday 08th April

Half term: 21st – 25th February

Staff Training day: 4th January

Summer Term 2022

Monday 25th April – Thursday 21st July

Bank holiday: 02nd May & 06th June

Half term: 30th May – 03rd June

Staff Training days: 25th April, 20th & 21st July