



St Mary's Newsletter

Issue 19

8th July 2024

St. Mary's Catholic Primary School, Woodbridge Road, Ipswich, IP4 4EU

<http://www.stmaryscatholicprimaryipswich.com>

School Rules:

Be ready, Be respectful, Be safe

Tweet of the Week

"#Prayer is the driving force of our life. It can seem like an abstract reality, far from our problems. Yet, prayer is essential, because we cannot go very far on our own. We are not all-powerful, and we fail miserably when we think we are. #YearOfPrayer." *Pope Francis*
(@Pontifex)



Dear Parents and Carers,

It is a very busy time of year in school. We have lots to look forward to, including our Key Stage 1 sports event, Key Stage 2 play 'Snow White' and the End of Term Mass.

Please take a moment to check our lost property rail as we will give anything left over to charity at the beginning of the summer holiday.

Warm Regards
Mrs Berry and Mrs Measham

Week Commencing 8th July 2024

Thurs 11th July: Year 6 Parish Mass in Church at 9.15am

Parents/carers welcome to attend

Fri 12th July: Non-Uniform Day for PTA Donations & PTA Pop-up Sale

Tues 16th July: Key Stage 1 Sports Day 9-10am

Parents/carers welcome to attend

Tues 16th July: Year 6 Leavers Assembly at 2.30pm in School

Wed 17th July: Key Stage 2 Play 'Snow White' at 2pm in School - *tickets required*

Thurs 18th July: Key Stage 2 Play 'Snow White' at 9am in School - *tickets required*

Fri 19th July: End of Term Mass in Church at 9am

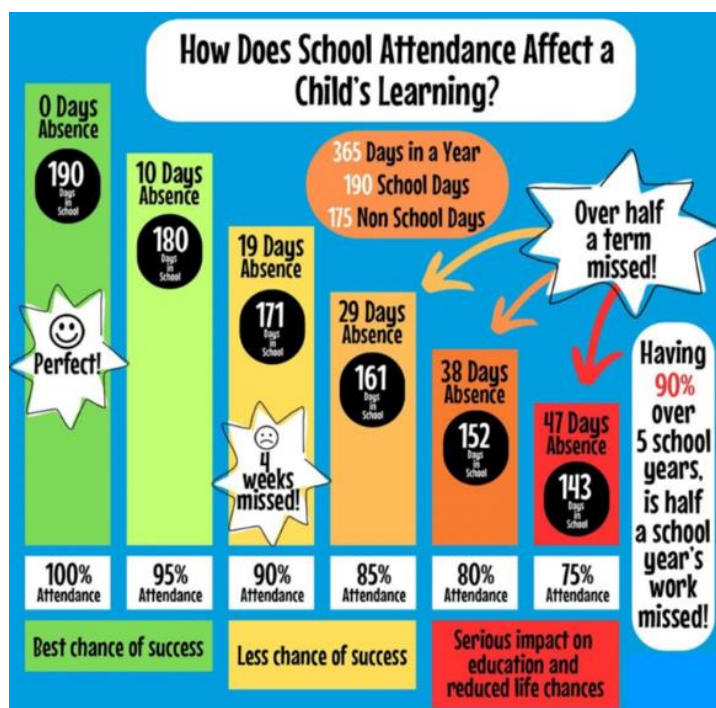
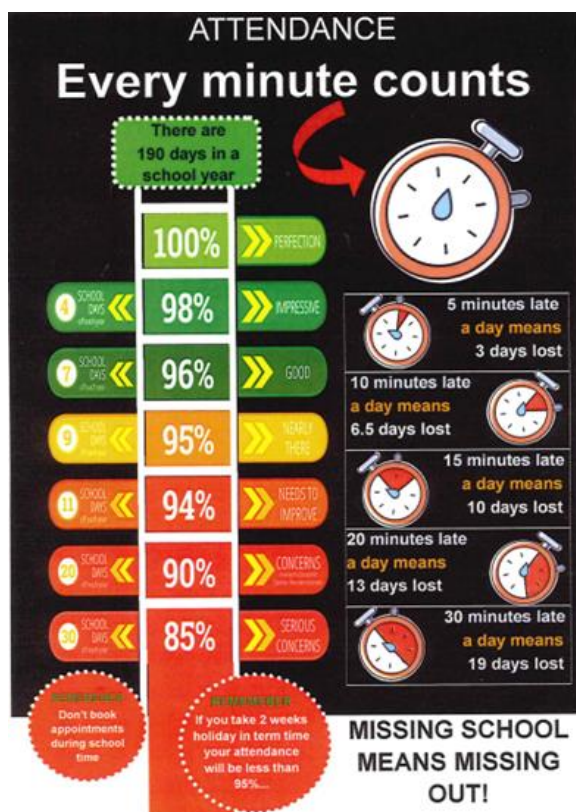
Parents/carers welcome to attend

Fri 19th July: End of Term

Children Return to School Wednesday 4th September

ATTENDANCE

Please take time to read and familiarise yourself with our Trust Attendance Policy: [Attendance Policy](#). This is currently being updated due to new guidance from the Department of Education which will become statutory from 19th August. There will be an increase in the amount charged for fixed penalty notices. Please be aware that the school is unable to authorise holiday requests for absence during term time.



PARKING

The school has received complaints from local residents regarding parking in the area. Please be advised that the roadway beyond the school is **PRIVATE** and **parking is not permitted**. Some drivers have reportedly been blocking driveways and parking on double yellow lines.

Please be considerate of our local neighbours.

Thank you for help and understanding.

NO PHONES ON SCHOOL PREMISES

Can we please kindly request that parents/carers **do not use mobile phones** anywhere on the school premises (including the playground) due to safeguarding concerns. Many thanks for your support.



Think before you park

POOR AND INCONSIDERATE PARKING CLOSE TO SCHOOLS CAN PLACE CHILDREN AT RISK

DO NOT PARK ON THE FOLLOWING

- 8 am - 6 pm
- No stopping Mon - Fri 8 am - 5 pm on entrance markings
- BUS STOP
- PERMIT HOLDERS ONLY

To report problem parking, scan the QR code

Failure to follow these rules may result in a Penalty Charge Notice being issued.

Please park safely and be considerate of others.

#thinkb4upark

IPSWICH BOROUGH COUNCIL



KEY STAGE 1 SPORTS DAY

Year Reception, Year 1 and Year 2 will be having their Sports Day on Tuesday 16th July. The children will be taking part in a few different activities on the school field, following by some races. Parents/carers are warmly welcome to come and watch the events, which will take place from 9am and should finish by approximately 10am.

SPORTS CLUBS AUTUMN TERM 2024

Mondays

Football Club (years 4, 5 & 6 boys) 3.30-4.30pm.

Wednesdays

Multisports Club (years 1, 2 & 3) starts at 8am.

Netball Club (years 5 & 6 girls) 3.30-4.30pm.

Thursdays

Football Club (years 4, 5 & 6 girls) starts at 8am.

Fridays

Handball & Dodgeball (years 4, 5 & 6) starts at 12.10pm.

Multisports Club (years 4, 5 & 6) 3.30-4.30pm.



Further information to be sent via Parentmail before the end of term. Prices are increasing to £3.50 per session.

Buttermarket IPSWICH

THE BUTTER-LYMPICS

Scan for more details

31st July, 7th & 14th August | 11am - 3pm

Join us for an unforgettable three-week journey of the Butter-lympics! Are you ready to unleash your inner champion? Let the games begin!

Buttermarket **BEAR CLUB!**

f @ d buttermarketipswich.com

Collect a medal each week to win prizes!

Bronze Bonanza | Wednesday 31st July
Come join the excitement at the Butter'lympics and participate in track events happening throughout the day

Silver Spectacular | Wednesday 7th August
Engage in a series of field events at this week's Butter'lympics

Golden Gala | Wednesday 14th August
This week features a lineup of mini-sports inspired by the Olympics.

PLUS Lots more fun sporting activities!

Scan for more details

f @ d buttermarketipswich.com

Buttermarket **BEAR CLUB!**

HELP US WIN £1,000 FOR OUR LIBRARY!



Nominate us at
nationalbooktokens.com/schools-prize
and you could win a £100 gift card!



In association with



Scan me!



#rebuildthelibrary

SUMMER READING CHALLENGE AT SUFFOLK LIBRARIES



Reading Quest is the new summer reading programme created by Suffolk Libraries, that aims to build a fun summer of reading for children and their families.

Reading Quest is an exciting opportunity to get the whole family involved in reading and making memories this summer! The challenge is open to children of all ages and all reading abilities.

Every week during the summer holidays, staff and volunteers will be on hand to chat to children about the activities completed each week and the exciting books they've read. While visiting the library, children can collect a weekly reward and a new stack of books to enjoy at home.

Visit your local library from **13th July** to collect your free map and start your quest!

Reading Quest is primarily aimed at children aged 2-12 years old, however, older children might be interested in volunteering in their local library to support younger children to take part.

For further information please visit the Suffolk Libraries website: <https://www.suffolklibraries.co.uk/resources/reading-quest>



LEGO® enthusiasts will have a treat this summer as a special exhibition comes to The Hold on Ipswich Waterfront just in time for the school holidays.

The exhibition showcases replicas of impressive structures from all around the world, created using over half a million LEGO® bricks. The exhibition, created by Warren Elsmore, features not only the Seven Wonders of the Ancient World, but also modern, natural, and historical wonders from all seven continents. Visitors will embark on a journey that takes them from the ancient pyramids of Egypt to the bustling streets of Old London Bridge, to the breath-taking night sky of the Aurora Australis, and finally to the centrepiece installation of the Great Barrier Reef.










Suitable for all ages. £5 per adult, £4 per child, £14 per group ticket (2 adults and 2 children). Book tickets here: <https://www.suffolkarchives.co.uk/brick-wonders/>

The exhibition opens on Friday 12th July and runs until the end of September.

YEAR 2 VISIT TO FELIXSTOWE

Year 2 enjoyed a visit to Felixstowe on 27th June. They had perfect weather for the trip, which involved catching a train in the morning before walking from the station and walking, walking and some more walking! Children had a wonderful time visiting the beach, the park and the pier before – exhausted from a wonderful day – they travelled by coach back to school.



		SUMMER HOLIDAYS 2024						OCT HALF TERM
		WEEK 1 Mon 22 – Fri 26 July	WEEK 2 Mon 29 July – Fri 2 Aug	WEEK 3 Mon 5 – Fri 9 Aug	WEEK 4 Mon 12 – Fri 16 Aug	WEEK 5 Mon 19 – Fri 23 Aug	WEEK 6 Tue 27 – Fri 30 Aug	Mon 28 Oct – Fri 1 Nov
SUFFOLK	Bury St Edmunds South Lee School Nowton Road IP33 2BT 	✓	✓	✓	✓	✓	✓	✓
	Felixstowe School High Street IP11 9QS 	✓	✓	✓	✓	✓		
	Ipswich High School Woolverstone IP9 1AZ 	✓	✓	✓	✓	✓	Tues & Wed only	✓
	Woodbridge Prep School Cumberland St IP12 4AH 	✓	✓	✓	✓	✓	Tues & Wed only	Returning to the Senior School
ESSEX	Braintree Gosfield School Halstead CO9 1PF 	✓	✓	✓	✓	✓		
	Chelmsford King Edward Grammar Broomfield Rd CM1 3SX 	✓	✓	✓	✓			TBC
	Colchester Royal Grammar Lexden Road CO3 3ND 	✓	✓	✓	✓	✓	✓	✓
	Shenfield High School Brentwood CM15 8RY 	✓	✓	✓	✓	✓		✓

SCHOOL'S OUT

School's Out Activities are back with six weeks of summer activities once again providing families with exciting, trusted and reliable school holiday childcare for children aged 4 – 16 yrs across Suffolk and Essex.

School's Out is:

- *Early Years Ofsted registered at all venues.
- *All staff are Enhanced DBS and reference checked as part of safer recruitment.
- *Full activity insurance
- *5 star reviews from Parents on Trustpilot and Facebook

Holiday Activity Fund (HAF) available at all venues for Pupil Premium families. These sell very quickly!


See website to book:

<https://www.schoolsoutactivities.co.uk/>

CHOOSE YOUR DAY CAMP

All of our venues operate all of our age-specific clubs. Which one will you be trying this year?

Click each photo to see what's inside!



Early Explorers
4-5 yrs

Designed by Primary School Teachers to aid in the development of children in Early Years.

Activities include:

- * Sensory Play
- * Painting
- * Baking
- * Drawing
- * Water & Sand Play
- * Dress-up & Photobooth
- * Perform on stage
- * Parachute Fun
- * Arts & Craft
- * Indoor Bouncy Castle
- * Mask Making
- * Human Hungry Hippos
- * Treasure Hunts
- * Sports Day Fun Day

Week of fun



Creative Crew
7-12 yrs

A day camp for girls and boys who want to explore their creative side, be active and have time to chill.

Activities include:

- * Arts & Crafts
- * Giant Twister
- * Human Hungry Hippos
- * Themed Music
- * Bake-off
- * Ceramics
- * Textiles
- * Hama Beads
- * Jewellery Making
- * Sand Art
- * Tie-dye
- * Dance on Stage
- * Archery
- * Rounders

Making memories




Adrenaline Adventure
7-12 yrs

A day camp designed for those looking for an action-packed week jammed full of exciting activities!

Activities include:

- * Nerf Targets
- * Archery
- * Football
- * Mario Kart Arcade
- * Kin-Ball
- * Unihoc
- * Kwik Cricket
- * Tennis
- * Table Tennis
- * Dodgeball
- * Roller Racers
- * Basketball
- * Badminton
- * Rocket Launch
- * Capture the Flag
- * Tug-of-War

Adventure awaits



Next Generation
13-16 yrs

Once children mature into teenagers they want to gain more responsibility, so we offer them a chance to assist on one of our other day camps whilst having fun during their school break.

This day camp includes:

- * Assigned Mentor
- * Working Journal
- * Observe & Question
- * Apply & Improve
- * Assist in Leadership
- * Work Experience
- * Gain Rewards
- * Build Confidence

Leadership ready



SPOTLIGHT ON

YEAR 1

Wow! How quickly this year has flown as we now enter our final 2 weeks of Year 1. It has been a joy to watch the children grow and develop lots of new and different skills over the course of this year. What a transition they have had from Reception to Year 1 as they are now ready to embark on new adventures in Year 2!

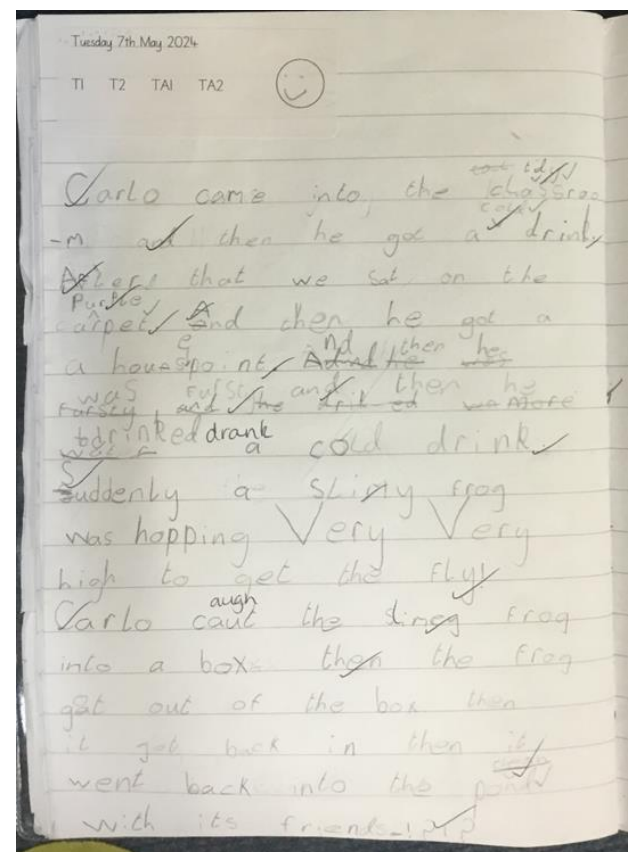
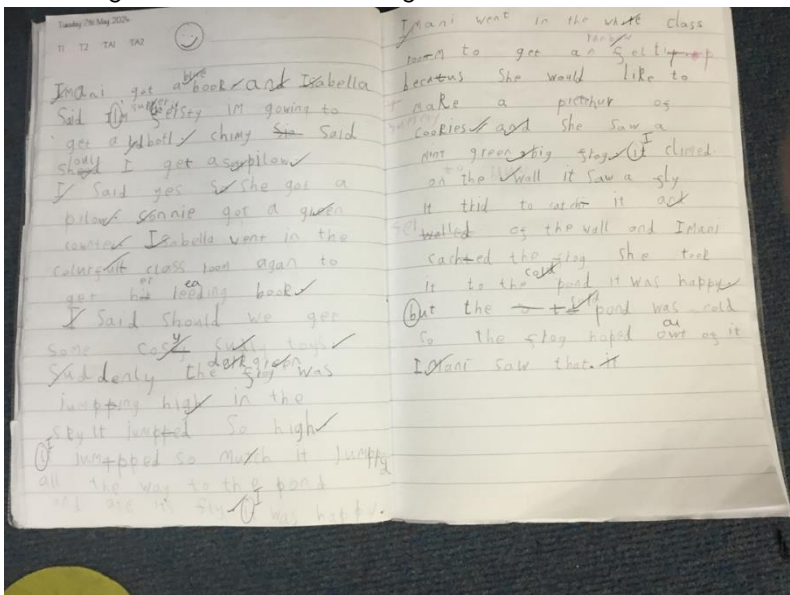
RE

In RE we have recently learnt about Hinduism as part of our alternative faiths week. We really enjoyed making comparisons to our own faith and having the opportunity to role play the story of Guru Nanak and the boulder... I think the pictures speak for themselves!



ENGLISH

In English we had great fun creating a story about the frog that came into our classroom last term. We enjoyed being imaginative to think about how we were going to solve the problem and end our story in an appropriate way. We also used lots of descriptive language to describe the setting and, of course, the frog!



MATHEMATICS

In Mathematics we have been learning about fractions, focusing on half and now moving on to quarters. We have learnt new vocabulary such as numerator and denominator and have a fun superhero way of remembering this! We have focused on finding a fraction of a shape, object and quantity.



SCIENCE

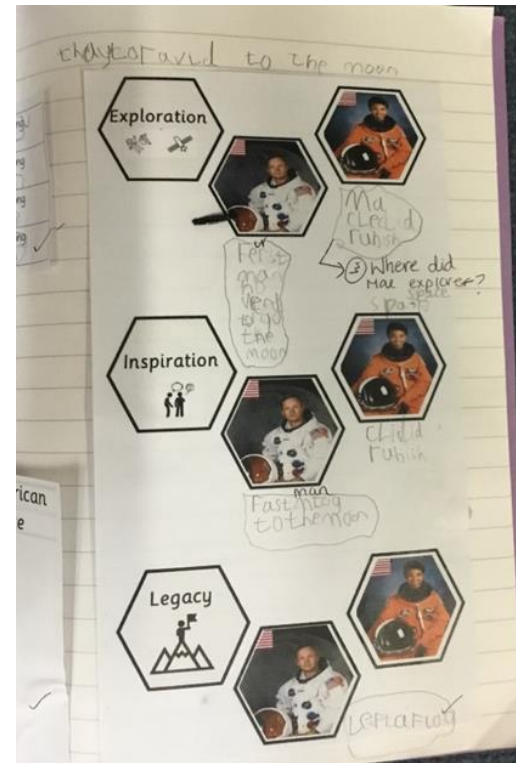
In Science we have learnt about different types of wild plants and garden plants. We were excited to go on scavenger hunts to find different types of plant and discuss their locations. We were even able to name them and talk about our own experiences outside of school. We also had so much fun on our trip to Colchester Zoo to complete our animals including humans learning module. Here we were able to identify the different types of animals we saw based on their appearance and our prior learning.





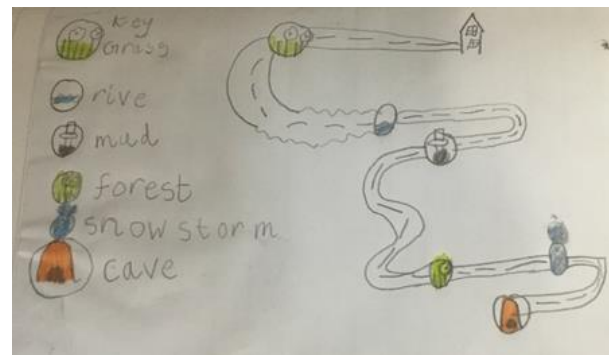
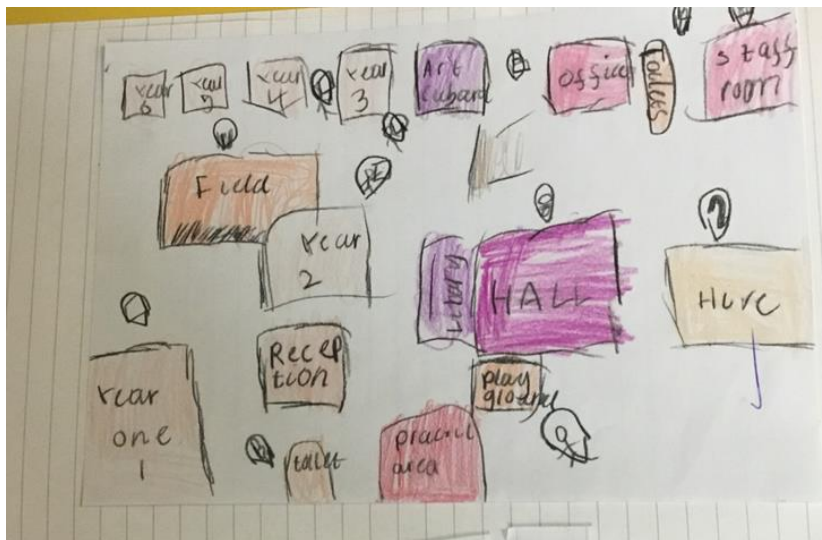
HISTORY

In History we have enjoyed learning about significant people in Space. We enjoyed learning about Neil Armstrong and Mae Jemison (who we had previously met through our reading text). We thoroughly enjoyed opportunities to compare them and consider their legacy. I am pleased to say we have some children who have been so inspired, they themselves want to go to space one day!



GEOGRAPHY

In Geography we have recently completed our learning module all about fieldwork. Here we have learnt how to draw imaginary maps of different stories and have gradually built up to creating a real life aerial map of the school. During this learning module we have enjoyed the opportunity to look at different maps of Ipswich and look at how Ipswich has changed since the 1800s!



MUSIC

We have been really lucky to have more singing sessions with Mrs MJ! We look forward to these sessions as we gradually learn more and more about the amazing world of music!



COMPUTING

In Computing we are now completing our learning module focused on programming. Here we will begin to programme a BeeBot and learn about different algorithms we can provide to instruct a BeeBot to follow directions.

ART & DT

Wow! What an amazing Arts Week we had at school. We have so many talented artists in Year 1 and it was a pleasure to get to display their work as part of our gallery! We really enjoyed creating artwork that popped!

As part of our DT we have recently completed our Textiles learning module where we learnt new skills such as how to thread a needle and do a running stitch. I think the children did a fabulous job!



KEY STAGE 2 CONCERT

On Tuesday 25th June, our talented musicians from Key Stage 2 gave a fantastic performance for admiring relatives in the audience. The children really put their heart and soul into their playing and the results of their effort and practice really showed. Well done everyone!



ARTS WEEK

We had a fantastic Arts Week 24th-28th June with some exciting and challenging projects producing an incredible body of work. The quality of artwork throughout the school was amazing. We have some fabulous artists in our school!



ART & WELL-BEING COMPETITION

Suffolk County Council's Children and Young People's Engagement Hub Team has launched an art well-being competition for children and young people in Suffolk, aged 5-25 years old, called 'Someone in My Corner'. The competition will run until 2nd September. The competition asks children and young people to think about a time when they had someone in their corner and how this helped support their emotional well-being, and

to share their stories in the form of creative writing or artwork.

For further information including competition entry details, please visit: <https://thesource.me.uk/mycorner/>

YEAR 3 ROMAN DAY

Year 3 took a step back in time and became Romans for the day. We all dressed up and took part in lots of activities. The day flew by!



Year 3 made their own Roman shields using cardboard, paint and tape. The creativity and effort put into the shields was fantastic! The children then engaged in a thrilling role-play session of 'Romans vs Celts', which was full of excitement and energy.



Following the role-play, we enjoyed a game of rounders. The children had a blast and demonstrated great teamwork and sportsmanship.

In the afternoon, we made delicious honey biscuits. We then had a feast with a variety of fruits, plain crackers, cheese and the freshly baked honey biscuits. The treats were a hit, and everyone agreed they were absolutely yummy!

The children had so much fun and all had a smile on their faces throughout the day!



FRIENDS OF ST MARY'S

Friday 12th July is a non-uniform day in exchange for £1 donation, and a pop-up sale after school.

In the morning, Friends of St Mary's volunteers will be on the playground in the morning to collect donations, and the breakfast club or office staff will be able to collect your child's £1 if needed. (This does not apply to families who chose to pay for non-uniform in advance.)

After school we will be holding a pop-up sale of preloved uniform, sweets, soft drinks and ice pops. Please remember to bring along some cash and stock up for the coming year!

We welcome any donations of preloved uniform, and if our outgoing year 6s have any they wish to donate once school ends, we would be happy to accept it.

Thank you for your support,
Friends of St Mary's PTA



PARENTAL RETURNSHIP

Are you looking for an opportunity to get back into work after taking an extended career break (over 2 years) due to parental responsibilities?

Following the success of last year's pilot scheme, Suffolk County Council (SCC) are running the returnship programme again, giving you the opportunity to join SCC to work for 12 weeks.

Please visit Suffolk Jobs Direct for more information: [Suffolk Jobs Direct](#)

NSPCC LISTEN UP, SPEAK UP



It takes a village to raise a child. And it takes a community to keep children safe.

That's why the NSPCC is encouraging every adult in the UK to take their 10-minute digital training and learn how to listen up and speak up for children.

Listen up, Speak up will show you:

- *some signs a child might be at risk, and steps you can take to help
- *how to approach difficult conversations to help keep children safe
- *who you can contact if you're ever concerned about a child or their family.

Follow this link: [NSPCC Listen up, Speak up 10-minute Training](#)

Worried about a child?

If you're worried about a child, even if you're unsure, contact the NSPCC Helpline to speak to a counsellor. Call us on 0808 800 5000, or email help@nspcc.org.uk

IN NEED OF SUPPORT?

Some sources of support are as follows:

<https://healthwatchsuffolk.co.uk/signposting/youngpeople/>

You can call Childline about anything on 0800 1111. There is the option to speak with one of its councillors. It also has plenty of information on its website, including information about Cyberbullying: <https://www.childline.org.uk/>

[Children and Young People's Emotional Wellbeing Hub](#)

Information, advice and support for anyone concerned about the emotional wellbeing and mental health of a child or young person aged 0 to 25 years. Link above or call 0345 600 2090.

<https://www.youngminds.org.uk/>

Anyone can call Samaritans on 116 123. It does not matter how old you are or what is bothering you. [This page](#) on the Samaritans website tells you what to expect if you call them.

If you are concerned about an immediate risk to the safety of a child, please call [Customer First](#) on 0808 800 4005.

In an emergency, call the Police on 999.

Summer Term Dates

16th July Reception, Year 1 & Year 2 Sports Day 9-10am

17th July Key Stage 2 Play 2pm

18th July Key Stage 2 Play 9am

19th July End of Term Mass in Church at 9am

Term dates for 2024 – 2025

Autumn Term 2024

Wednesday 4th September – Friday 20th December

Half term: 28th October – 1st November

Staff Training day: 2nd September, 3rd September &
4th November

Spring Term 2025

Tuesday 7th January – Friday 4th April

Half term: 17th February – 21st February

Staff Training day: 6th January

Summer Term 2025

Wednesday 23rd April – Tuesday 22nd July

Bank holiday: 5th May

Half term: 26th May – 30th May

Staff Training day: 22nd April