

Newsletter

Issue 27

23rd April 2021

St. Mary's Catholic Primary School, Woodbridge Road, Ipswich, IP4 4EU

<http://www.stmaryscatholicprimaryipswich.com>



School Rules:
Be ready, Be respectful, Be safe

Tweet of the Week

"For God, you are that little coin that the Lord seeks without pause. He wants to tell you that you are precious and unique in His eyes. No one can take your place in the heart of God."

[Pope Francis \(@Pontifex\)](#)



Dear Parents/Carers,

Welcome to this week's newsletter. It is great to see the children once again being able to enjoy sports clubs.

Spaces are still available in KS2, Years 3, 4, 5, 6. See parentmail sent on 13th April for details. If your child is interested please email the school office asap, thank you.

Warmest Regards
Mrs Berry

Just Giving:

A wonderful act of kindness, Nerys Bull in Year 4 has decided to raise money and have her hair cut for a wig to be made through the little princess trust charity. If you wish to donate then please use the link below:

www.justgiving.com/fundraising/Angela-Bull1

Good luck and well done Nerys.



Year R:

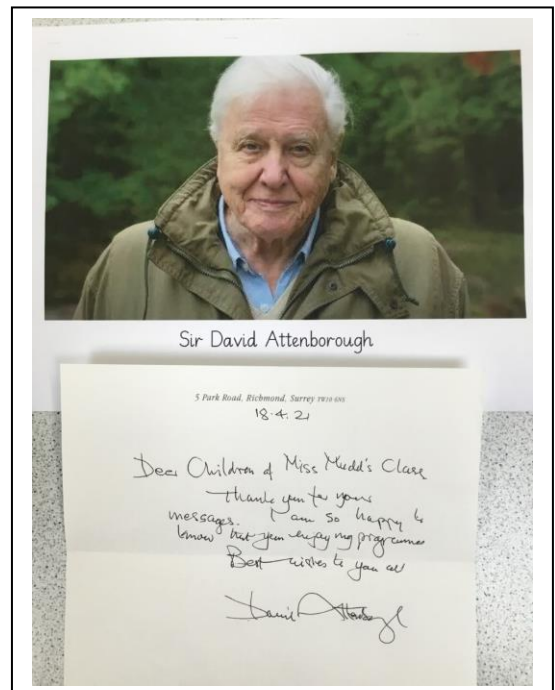
On Thursday Reception enjoyed celebrating Earth Day. We started by reading the story Dinosaurs and all that Rubbish. After this we went on a litter pick in our garden and found bits of rubbish that we put in the bin. We talked about some ways that we can help to save the world - turning off lights, turning the tap off between brushing our teeth, putting rubbish in the bin and recycling. We then made planet earth, by using green and blue paint and a salad spinner - great arm exercise.



Year 1:

Year 1 were very excited to receive a letter this week from.....Sir David Attenborough! We had used clips from his documentaries in our topic on the Savanna and now we are working on ways to protect the planet in our summer topic, which we know is very important to him. We wanted to let him know what a superhero he is to us - even though he doesn't wear a cape! He very kindly wrote back to us straightaway and we will treasure this hand-written letter from a National Treasure.

Well done Year 1



Year 2:

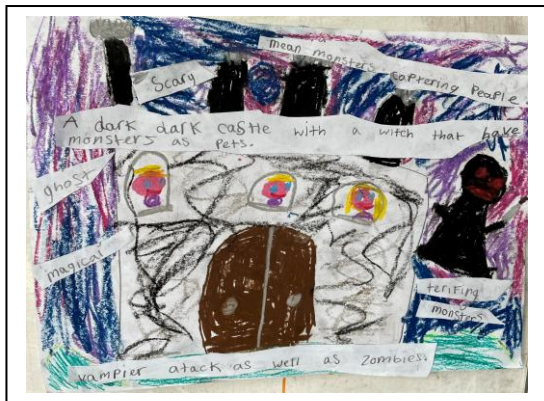
As part of our work on India this half term, Year 2 were learning all about Rangoli, an art form that originates in India. After looking at the patterns and variety of designs and then creating our own in our sketch books, we decided to go large and went outside to create colourful Rangoli patterns on the playground using chalks. They looked amazing - great job Year 2!





Year 3:

Year 3 listened to some dark and eerie music in Literacy this week. They noted down the words and phrases that came into their minds while they listened to the music, then created some artwork and stuck their words/phrases on the artwork to make some creative poetry. We're very pleased with the results!



Year 4:

Year 4 have been learning how to use an atlas, locate countries and find out which climate zone they are located in.



Year 5:

This week, year 5 are continuing to read Cosmic by Frank Cottrell Boyce.

They took on the roles of some of the main characters and we had some fantastic performances in front of the class. It really brought the book to life. Well done, Year 5!



Year 6:

On Wednesday Year 6 were creating prototype boats ready for their build later on in the term. They used foil and focused on the shape of the boat. They tested whether they floated and then tested how much weight they could hold. A fun but informative D.T session for all.



Music Tuition:

Please could you ensure that your child has their instrument in school with them for their music lesson

Tuesday : Violins

Wednesday : Trumpet and Cornet

Thursday : Flute and Clarinet

the curly hair project

New this term! [The Curly Hair Project](http://www.suffolksendias.co.uk) is a social enterprise supporting people with autism and building understanding around ASD.

They have been commissioned to offer three one-hour sessions on different Saturdays, suitable for children and young people with autism (aged between 6 and 16 years). The webinars are designed for a parent to watch with their child or young person and they don't have to interact if they don't want to. If you are interested in any or all of the sessions, please email us at: enquiries@suffolksendias.co.uk They will be keeping the groups small to make it easier for the young people to take part, so, bookings will be given on a **first-come, first-served basis**.

Webinar one: [Understanding and Managing Anxiety](#) (opens PDF flyer)
Saturday 1st May 2021 10am – 11.00 am

Webinar two: [Recognising emotions as an autistic child](#) (opens PDF flyer)
Saturday 29th May 2021 10am – 11.00 am

Webinar three: [How to make and keep friends](#) (opens PDF flyer)
Saturday 26th June 2021 10am – 11.00 am



Comic Strip Awareness

We're also collaborating with the County Inclusion Support Service (CISS) to host some relaxed online 'coffee mornings' where this specialist education team will explore tools for supporting your child's understanding and management of social situations. The sessions are suitable for parents of primary and secondary aged pupils. We're starting with a session explaining how comic strip conversations can be used at school and at home to help children and young people develop social understanding through drawing.

4th May 2021 10:30 – 11:30am

[Click here to register_for the Comic Strip Awareness session](#)

PTA:

Your School Lottery

Dear Parents and Carers,

We had our first school lottery draw this week, huge congratulations to our lucky St Mary's winner who got a percentage of the St Mary's ticket sales! All the winning details are available on the website straight after the draw (8pm every Saturday).

The number of people who have joined up at this early stage has been very encouraging, we have over fifty tickets in the draw for next week. If these sort of numbers continue throughout the year, the school will benefit from raising over £1,000 from the draws.

We would love to eventually get to 100 tickets per draw like a 100 club, but for now we are moving our target up in increments. Our next target is to sell another 19 to get us up to 70 tickets – could one of those be yours? Step by step instructions are attached to the newsletter, or just search 'Your School Lottery – St Mary's Ipswich' to join.

If you've been thinking about it, or even got as far as inputting the details, do come and join us and give it a try. It's easy to join, and more importantly - if you don't like it, it's easy to leave. For less than the price of a takeaway tea or coffee you will be helping the school raise much needed funds.

Thank you all very much for your support.

Best wishes,

Marge Jessop and the Friends of St Mary's PTA

The graphic features the St Mary's School crest and the 'Your School Lottery' logo. It lists three steps: 1. JOIN OUR LOTTERY (with a £1 ticket icon), 2. BOOST SCHOOL FUNDS (with a bar chart icon), and 3. WIN CASH PRIZES (with a person and money icon). Below this is a red banner that says 'It's As Easy As' followed by three hands showing one, two, and three fingers. A bulleted list follows: Tickets cost just £1 a week; The easy way to help us raise funds; Local cash prizes every week; Chance to win the £25k jackpot. At the bottom is a large 'Buy A Ticket' button with a small note: 'Supporters must be 18 years of age or older.'

Your School Lottery

We are delighted to announce the launch of our school lottery!

Draws take place **every Saturday at 8pm**, step by step instructions follow on how to take part and you can join right now!

Tickets are £1 each and you can buy them using either direct debit or by debit card.

Each week all entrants in the 'Your School Lottery' stand to win a £25,000 jackpot, and someone from our school community will win a guaranteed prize every single week – a proportion of our school's ticket takings.

It is open to everyone – parents, teachers, grandparents, work colleagues, parishioners – so please spread the word far and wide. The more people that play, the more funds we raise for the school.

Funds raised will go towards St Mary's school as per the Friends of St Mary's constitution.

Best of luck! From Marge Jessop and the FOSM PTA

How do I support the school? Step by step instructions follow:

Either: click this link - [Support St Mary's Catholic Primary School Ipswich when you play Your School Lottery - Your School Lottery](#)

Or: Search 'Your School Lottery' on the internet, click 'Buy a Ticket', put in St Mary's Ipswich and it will show our logo and 'St Mary's Catholic Primary School Ipswich', click support us.

Then:

- Click 'buy tickets'.
- Select your numbers – six digits between 0 and 9 in any order you like. You can use the same number more than once. Or you can opt for them to choose for you.
- Press 'choose payment method'.
- You may either choose a direct debit (this continues until you decide to cancel it. It is easily cancelled by simply clicking in to 'your tickets' and then 'cancel' on your account)
- Or you may choose to use a debit card to buy tickets for a set amount of weeks. They will remind you when your current payment is coming up to expiry, and will not take any money without your permission.
- The minimum purchase is a month's tickets.

Other relevant information:

- You may opt out of school lottery related communications on the website.
- The lottery is administered remotely by the 'Your School Lottery' company, and all draws, transactions and payments are handled by them.
- In the first instance please check the 'Your School Lottery' website for any queries you may have. If you can't find your answer there, please direct any queries to the FOSM PTA via the school office.

Recycling your Ink Cartridges:

recycle your inkjet cartridges here

theinkbin
keeping the world colourful

theinkbin
keeping the world colourful

We are very excited to announce that we are now working with *The Ink Bin*- a specialist teacher-led business which supports pupils to collect empty inkjet printer cartridges. *The Ink Bin* pledge to recycle as much of the single-use plastic as possible and also send away some cartridges for refilling in order to reduce their carbon miles. For refillable cartridges, the company will give the school money which we can spend on exciting new equipment.

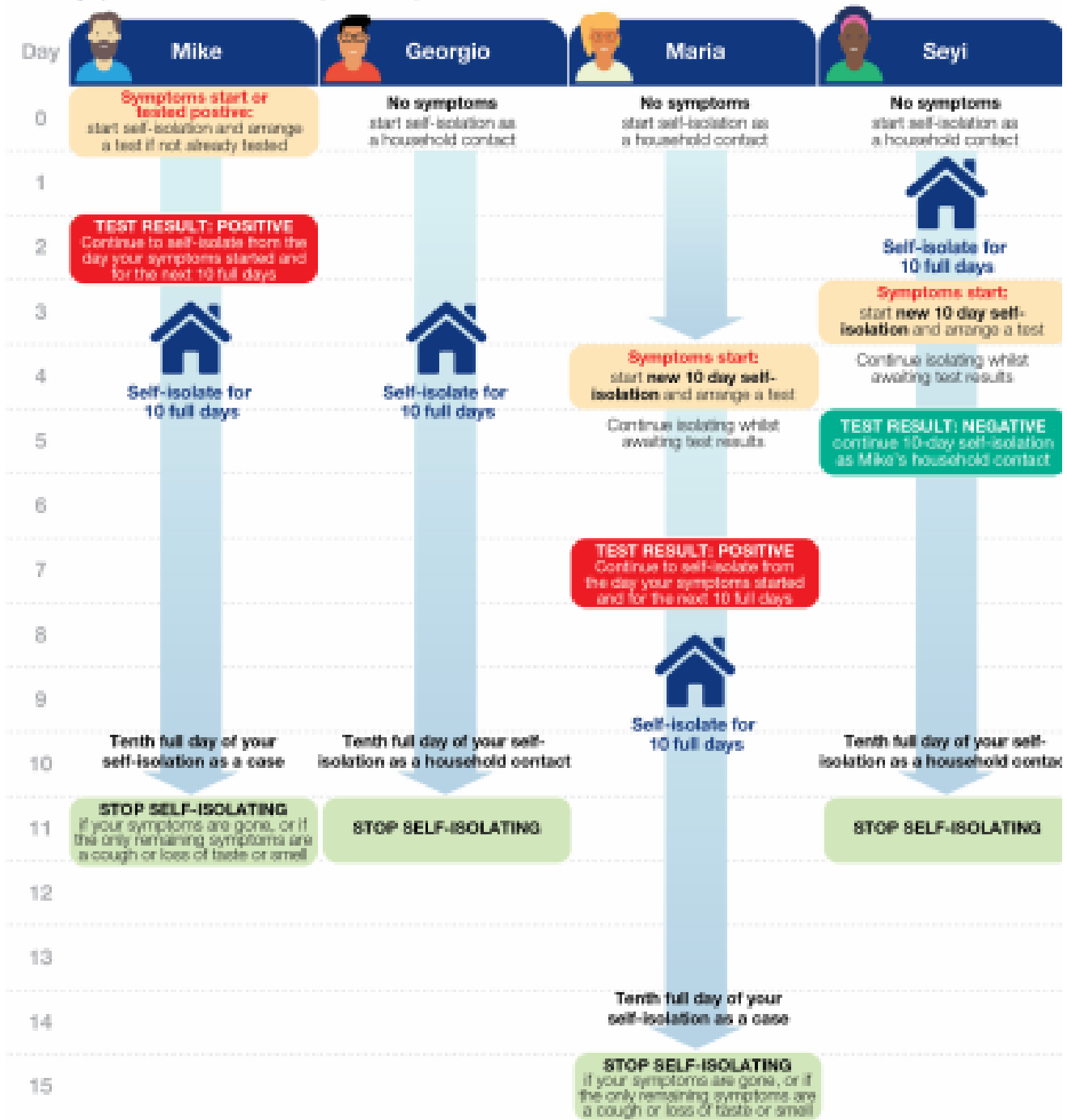
The project aims to support children to be as eco-conscious as possible as well as learn through enterprise. Wherever possible, it will be child-led. Please do check at home, at work and with friends and family to see if you have any old cartridges which can be brought into school- every cartridge makes a difference!



Stay at home and self-isolate.

Please see [detailed guidance online](#).

Mike's household: In this example, Mike lives with Georgio, Maria and Seyi. Mike is the first case of COVID-19 in this household. He and everyone in the household begin self-isolating from the day Mike's symptoms start (or if he had no symptoms, from the date of his positive test).



Self-isolate for 10 full days.

You need to self-isolate from the day the first person in your household started symptoms and for the next 10 full days. If they did not have symptoms, self-isolate from the day of their test and for the next 10 full days.

To self-isolate means:

Do not go to work, school, or public areas and do not use public transport or taxis. Only leave your home to get to your test if you need to, observe strict social distancing advice and return immediately afterwards.



HANDS



FACE



SPACE

Date for your Diary:

Term dates for 2021

Spring Term 2021

Tuesday 5th January – Friday 26th March

Half term: 15th – 19th February

Staff Training day: 4th January

Summer Term 2021

Monday 12th April – Friday 16th July

Bank holiday: 3rd May

Half term: 31st May – 4th June

Staff Training days: 19th & 20th July (disaggregated)

Term dates for 2021 - 2022

Autumn Term 2021

Wednesday 01st September – Friday 17th December

Half term: 25th – 29th October

Staff Training day: 01st September

Spring Term 2022

Tuesday 4th January – Friday 08th April

Half term: 21st – 25th February

Staff Training day: 4th January

Summer Term 2022

Monday 25th April – Thursday 21st July

Bank holiday: 02nd May

Half term: 30th May – 03rd June

Staff Training days: 25th April, 20th & 21st July

