



St Mary's Newsletter

Issue 1

16th September 2022

St. Mary's Catholic Primary School, Woodbridge Road, Ipswich, IP4 4EU

<http://www.stmaryscatholicprimaryipswich.com>

School Rules:

Be ready, Be respectful, Be safe

Tweet of the Week

"I am deeply saddened to learn of the death of Her Majesty Queen Elizabeth II, I offer heartfelt condolences to Your Majesty, the Members of the Royal Family, the People of the United Kingdom and the Commonwealth"

Pope Francis (@Pontifex)



WC 19th September 2022

Mon 19th September: School Closed

Tue 20th September: Yr5 Swimming

Tue 20th September: Orchestra – 3.30-4.15pm

Wed 21st September: Beginning of term mass in Church
2.30pm – Parents Welcome

Dear Parent and Carers,

It has been wonderful to welcome our pupils back to school and see them return with such enthusiasm. The start to the academic year has been purposeful and positive. We enjoyed welcoming many of you to our meet the teacher sessions, in addition to these meetings the class pages on our website contain lots of useful information about your child's learning this term.

If you have any concerns that you wish to discuss, please contact your child's class teacher, in the first instance via the office. The wellbeing of your children is our primary concern and we are stronger when we are together.

Warm Regards

Mrs Berry and Mrs Measham



ONLINE BOOK OF CONDOLENCE:

Below is a link to sign the Royal Online Book of Condolence for the loss of the Queen Elizabeth II. <https://www.royal.uk/>

TRIPS/EVENTS:

All sports clubs:

Monday 3.30-4.30pm Year 1 & 2 Football -**FULL**

Wednesday 8.00-8.45am Year 1 & 2 Multisports

Wednesday 3.30-4.30pm Years 5 & 6 Football

Wednesday 3.30-4.15pm Years 5 & 6 Netball

Thursday 8.00-8.45am Years 3 & 4 Football

Friday 12.10-12.45pm KS2 Girls Football

Friday 3.30-4.30pm KS2 Multisports - **FULL**



TEACHERS FOR SEPTEMBER 2022:

Reception	–	Mrs Goodwin
Year 1	–	Miss Southgate – Assistant Headteacher
Year 2	–	Mr Cook – KSI Lead
Year 3	–	Mrs Hawes and Mrs Snowden
Year 4	–	Mr Bentley – SENDCo
Year 5	–	Miss Godbold and Miss McGarry
Year 6	–	Mrs DN – KS2 Lead

RECEPTION SEPTEMBER 2023 APPLICATIONS:

We will be holding two open day sessions on November 16th, one at 9.30am and another at 1.30pm. If you are thinking of applying to St Mary's for a Reception place in September 2023, please email the school to book a slot.

Our email address is: admin@st-marys-ipswich.suffolk.sch.uk

Applications for a Reception September 2023 place should be made by the deadline date of 15th January 2023. The application should be made online via the Suffolk County Council Admissions website.

<https://www.suffolk.gov.uk/children-families-and-learning/schools/school-places/apply-for-a-primary-school-place-20232024/>



IMPORTANT: St Mary's require a completed Supplementary Information Form (SIF) which should be sent to the school before 15th January deadline please. The Supplementary Information Form (SIF) can be found on our website under 'Key Information - Admissions'

HIGH SCHOOL APPLICATIONS FOR SEPTEMBER 2023:

Year 6, high school applications are now open and will close on 31st October 2022.

You need to apply directly to Suffolk County Council and remember to check if your new school requires a Supplementary information form (SIF), if needed, these should be sent direct to your chosen new school.

<https://www.suffolk.gov.uk/children-families-and-learning/schools/school-places/apply-for-a-secondary-school-place-20232024/>



FREE SCHOOL MEALS:

Your child will get free school meals if you receive any of the following:

- Income Support
- Income-based Job Seeker's Allowance
- Income-related Employment and Support Allowance
- Guarantee element of State Pension Credit
- Child Tax Credit but **no element of Working Tax Credit** and have an annual income (as assessed by HM Revenues & Customs) that does not exceed £16,190
- If you are supported under Part VI of the Immigration and Asylum Act 1999
- Working Tax Credit during the four-week period immediately after your employment finishes or after you start to work fewer hours per week
- Universal Credit (provided you have an annual net earned income of no more than £7,400 (£616.67 per month), as assessed by earnings from up to three of your most recent assessment periods).



To check if your child is eligible, apply online:

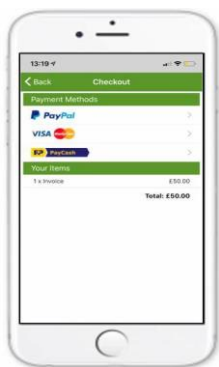
<https://www.suffolk.gov.uk/children-families-and-learning/schools/school-meals-uniforms-and-trips/apply-for-free-school-meals/>

COOL MILK:

If any other parent would like to pay for morning milk and their child is older than 5 they can register, using the link and pay cool milk.

<https://www.coolmilk.com/>

KS2 PAYING FOR SCHOOL MEALS:



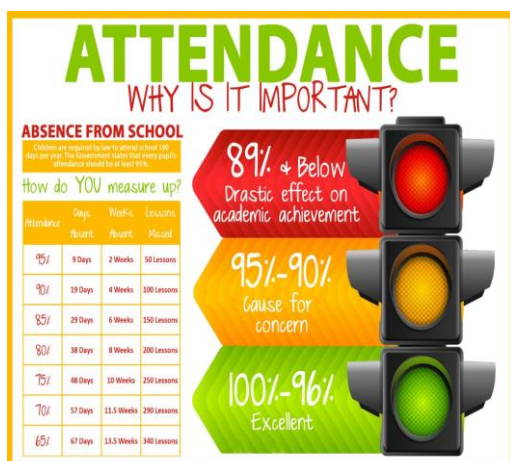
A polite reminder that school meals should be paid for in advance. Please make sure that your child's lunch account is in credit.

DATA FORMS:

Your child's data forms will be coming home with your child this week, these need to be checked and returned to school by 23rd September 2022. This is extremely important if any of your contact details may have changed. Many thanks for your co-operation



ATTENDANCE:



Please take time to read and familiarise yourself with our Trust attendance policy. Please be aware that the school are unable to authorise holiday requests for absence during term time.

If you arrive after 8.50am please come to the office to sign the late book.

It is really important that you ensure your child arrives at school between 8:40 and 8:50am.

A late arrival after 8.50am the class has already started and this is disruptive for your child and others in the class.

https://www.stmaryscatholicprimaryjpswich.com/_site/data/files/policies/DO4-6258157B2B78BA94-74-9F6FB9079DE.pdf



SPOTLIGHT

ON YEAR 6

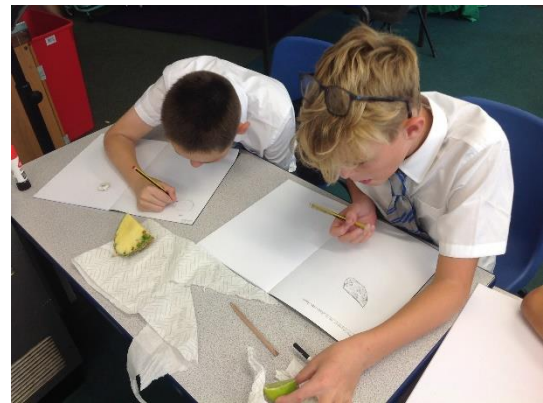
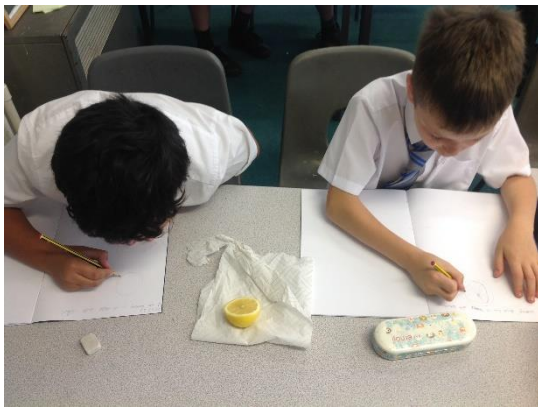
We have had a busy couple of weeks back in Year 6 settling back into old and new routines and preparing for our final year at St Mary's.

As a class, we have discussed roles and responsibilities this year and will soon nominate house captains to help lead the school this academic year.

Please see below for subject specific things we have been getting up to.



Art – We started our Art topic of drawing this term with some observational drawing of fruit using the mediums of watercolours, charcoal, colouring pencils and sketching pencils. The children loved this session and enjoyed looking at some fruits they had not seen/tried before.



R.E – For our topic: 'The Kingdom of God' we made up some role plays showing off the key values of generosity, faith, love, justice and... We had to make sure they were clear because other children had to then guess which value we were representing.

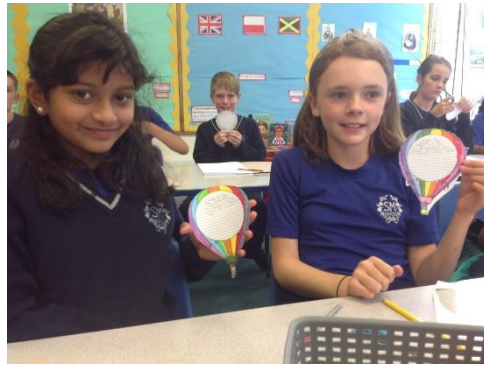




P.E – Here we are recapping our positioning and passing skills for Tag Rugby. As the term progresses we are going to build up and progress our skills in this team sport.



PSHE – Aspire. This is the key word and idea we looked at in our first lesson. The children were thoughtful and reflective and created their own aspirations and dreams. We will look at these if we are having a bad day to remind us of our hopes for the future.



ST ALBAN'S OPEN EVENING/MORNING:

St Alban's Catholic High School

Learning... Respecting... Caring...

Open Evening

An opportunity to visit our school, see our outstanding facilities and talk with our knowledgeable staff

Wednesday 21st September 2022

5.30pm - 8:00pm

Presentations by the Headteacher, Matt Baker, at 6.30pm & 7.30pm

Open Mornings

Monday 3rd and Tuesday 4th October 2022

9.15am - 10.25am

Please visit our school website for further information and how to pre-book a tour appointment

#thestalbans way

Digby Road, Ipswich
Suffolk, IP4 3NJ

01473 726178 general@st-albans.suffolk.sch.uk www.st-albans.suffolk.sch.uk @stalbanshigh

TERM DATES:

Term dates for 2022 – 2023

Autumn Term 2022

Monday 5th September – Friday 16th December

Half term: 24th – 28th October

Staff Training day: 1st & 2nd September

Spring Term 2023

Wednesday 4th January – Friday 31st March

Half term: 13th – 17th February

Staff Training day: 3rd January

Summer Term 2023

Tuesday 18th April – Thursday 20th July

Bank holiday: 1st May

Half term: 29th May – 2nd June

Staff Training days: 17th April, 21st July