



St Mary's Newsletter

Issue 5

14th October 2022

St. Mary's Catholic Primary School, Woodbridge Road, Ipswich, IP4 4EU

<http://www.stmaryscatholicprimaryipswich.com>

School Rules:

Be ready, Be respectful, Be safe

Tweet of the Week

"The Lord has a great desire for us -- to make us sharers in his own life. In our dialogue with Him, we learn to understand what we truly want from our lives."



Pope Francis (@Pontifex)



WC 17th October 2022

Tue 18th October: Yr5 Swimming

Thu 20th October: Yr3 Class Mass 2.45pm Parents Welcome

Tue 18th October: Christmas Ensemble Practice 8.15am Yrs4,5&6 Thu 20th October: Yr6 Parish Mass 9.15am

Tue 18th October: Flu Immunisations

Fri 21st October: 9am Celebration Assembly Yrs1,2&3 Parents Welcome

Tue 18th October: Orchestra – 3.30-4.15pm

Wed 19th October: School Photos

Fri 21st October: 3pm Celebration Assembly Yrs4,5&6 Parents Welcome

HARVEST FESTIVAL:

Thank you all for your kind donations, we have been truly touched by your generosity and kindness. All of your donations have been delivered to FIND who will help local families in need.



SOUP KITCHEN:

Year 4 and the Fundraising Committee would just like to say a HUGE "Thank You!" to everyone who came and supported the Soup Kitchen on Thursday night in the hall. It was terrific to see everyone so excited to share the bread and soup the children had made. We had lots of compliments so please Year 4 keeeeeep cooking! You will be delighted to hear that we raised over £100 for CAFOD too. Thanks again
Year 4, the Fundraising Committee, Miss Mudd and Mr Bentley



OPEN DAY 16TH NOVEMBER 2022:

We will be holding two open day sessions for perspective parents on November 16th, one at 9.30am and another at 1.30pm. If you are thinking of applying to St Mary's for a Reception place in September 2023, please email the school to book a slot. Our email address is: admin@st-marys-ipswich.suffolk.sch.uk



RECEPTION SEPTEMBER 2023 APPLICATIONS:

Applications for a Reception September 2023 place should be made by the deadline date of 15th January 2023. The application should be made online via the Suffolk County Council Admissions website.

<https://www.suffolk.gov.uk/children-families-and-learning/schools/school-places/apply-for-a-primary-school-place-20232024/>

IMPORTANT: St Mary's require a completed Supplementary Information Form (SIF) which should be sent to the school before 15th January deadline please. The Supplementary Information Form (SIF) can be found on our website under 'Key Information - Admissions'

HIGH SCHOOL APPLICATIONS FOR SEPTEMBER 2023:

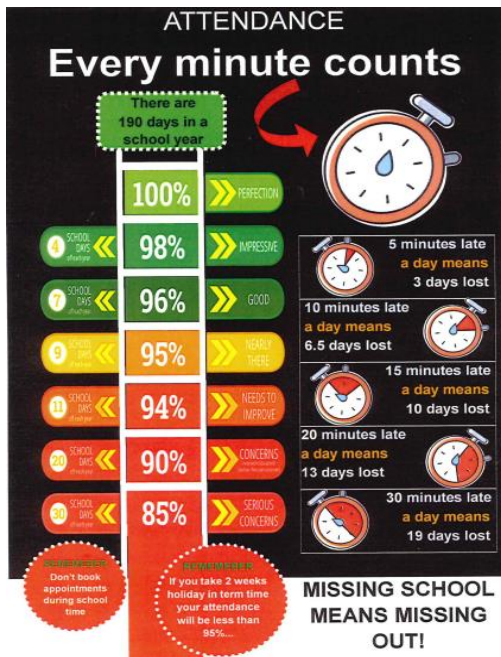
Year 6, high school applications are now open and will close on **31st October 2022.**

You need to apply directly to Suffolk County Council and remember to check if your new school requires a Supplementary information form (SIF), if needed, these should be sent direct to your chosen new school.



<https://www.suffolk.gov.uk/children-families-and-learning/schools/school-places/apply-for-a-secondary-school-place-20232024/>

ATTENDANCE:



Please take time to read and familiarise yourself with our Trust attendance policy. Please be aware that the school are unable to authorise holiday requests for absence during term time.

If you arrive after 8.50am please come to the office to sign the late book.

It is really important that you ensure your child arrives at school between 8.40 and 8.50am.

A late arrival after 8.50am means that the class has already started learning and this is disruptive for your child and others in the class.

https://www.stmaryscatholicprimaryjipswich.com/_site/data/files/policies/DO4-6258157B2B78BA94749F6FB9079DE.pdf

CHRISTMAS ENSEMBLE PRACTICE YR4, YR5 & YR6:

Christmas Ensemble performance will take place on the last day of term, Friday 16th December. Children in years 4, 5 and 6 are welcome to take part by either singing or playing their instruments, rehearsals will start on Tuesday 18th October at 8.15am in the hall.



FLU IMMUNISATIONS:



Our school Flu immunisations will be taking place on Tuesday 18th October, the deadline for giving consent for your child is Sunday 16th October.

If you still wish to give consent please use the link below:

<https://eastanglia.schoolvaccination.uk/flu/2022/suffolk>

WHOLE SCHOOL PHOTOS:

The photographers will be in school on Wednesday 19th October 2022 taking individual and school photos.

TEMPEST
PHOTOGRAPHY



SPOTLIGHT ON YEAR 2

Year 2 have been very busy with our learning this half term! We have been focussing on our school rules 'Be Ready, Be Respectful and Be Safe' as well as trying our best to be like our learning behaviour characters: Wilbur the Wolf, who is kind and thoughtful, Ollie the Owl, who is focused, Tommy the Tortoise, who never gives up, Colin the Cat, who is curious, and Millie the Meerkat, who is a collaborative learner.

RE

We have learned about new beginnings in RE, thinking about how it feels to start something new. We have learned that God is always with us and we looked at the creation story. We have created lots of artwork around these ideas and made stars with God's wishes and hopes for us as we grow up.



Science

Our topic for this half term is 'Living things and their habitats'. We have been thinking about MRS GREN (Movement, Respiration, Sensitivity, Growth, Reproduction, Excretion and Nutrition) and how this tells us if something is alive or not. We have learned about different habitats (micro and macro), food chains and how they are connected. **Ask your child to draw you a food chain - are the arrows going the right way?**



History

Our topic for the half term is The Great Fire of London. So far, we have learned when the fire happened, how it happened and why it spread so quickly. We learned about where the fire spread to and what the people of London did to try and stop it. **Ask your child why the fire was able spread so quickly!**

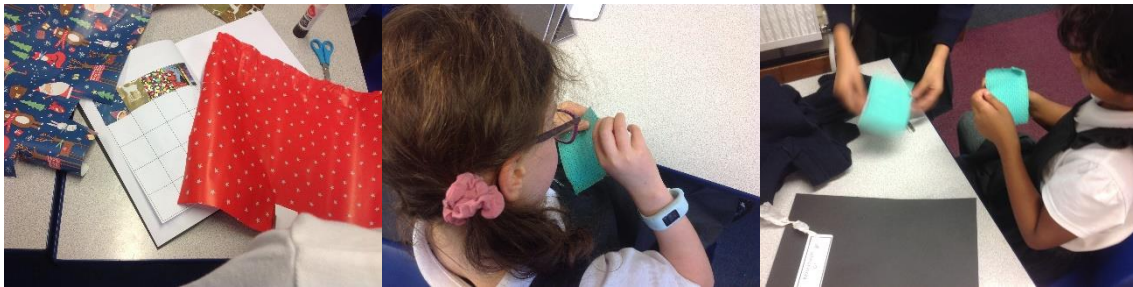
Art

We have finished our unit on 'drawing' in art. We thought about different ways of mark making, learning about cross hatching, waves, swirls and stippling. We used all of these different methods to make our own artwork, based upon Beth Krommes 'Waves'.



DT

We have just started our unit on 'textiles'. We have made patchworks by using a template to cut pieces of wrapping paper and stick them into a patchwork design. We then practised our stitching, learning how to do an overstitch and inline stitch.



Computing

We have started our unit on 'Digital media: Making music'. We listened to different pieces from Holst's 'Planets' and thought about how each piece was different. We learned what a rhythm was and used Chrome Music Lab to make our own short pieces of music with a rhythm.



PSHE

We have been learning about healthy lifestyles in PSHE this half term. We have thought about what foods are healthy and designed a healthy packed lunch. We have also thought about what healthy goals are and made goals for ourselves, based on something that we wish we could do, but cannot yet. We have enjoyed taking part in circle time and other turn-taking games.



TERM DATES:

Term dates for 2022 – 2023

Autumn Term 2022

Monday 5th September – Friday 16th December

Half term: 24th – 28th October

Staff Training day: 1st & 2nd September

Spring Term 2023

Wednesday 4th January – Friday 31st March

Half term: 13th – 17th February

Staff Training day: 3rd January

Summer Term 2023

Tuesday 18th April – Thursday 20th July

Bank holiday: 1st May

Half term: 29th May – 2nd June

Staff Training days: 17th April, 21st July