



St Mary's Newsletter

Issue 4

3rd November 2023

St. Mary's Catholic Primary School, Woodbridge Road, Ipswich, IP4 4EU

<http://www.stmaryscatholicprimaryipswich.com>

School Rules:

Be ready, Be respectful, Be safe

Tweet of the Week

"Let the arms cease. Stop, brothers and sisters: war is always a defeat — always, always!"

Pope Francis (@Pontifex)

Week Commencing 6th November 2023

Tues 7th Nov: Year 5 Swimming

Wed 8th Nov: Flu Immunisations in School

Thurs 9th Nov: Years 3 & 4 Joint Class Mass in School,
2.30pm — Parents & Careers Welcome

Thurs 9th Nov: Orchestra 3.30-4.15pm

Mon 13th Nov: Anti-Bullying Week

Wed 15th Nov: Book Share for Years 1-6, 3.30-4pm

Thurs 16th Nov: Year 5 Parish Mass in Church, 9.15am

Dear Parents and Carers,

Welcome back to school, we hope you all had a restful half term.

As the weather has turned colder please ensure your child has a coat in school everyday and is wearing our winter uniform with a tie for those in KS2. A polite reminder that PE kit is navy blue tracksuit bottoms or shorts.

The Gospel this week shows that God wants us to experience love, both in the giving and receiving of it. We have been thinking about receiving love and showing love through our actions. We know this is not always easy, but it is important that we keep trying.

"You must love the Lord your God... You must love your neighbour as yourself"
Matthew 22:39

Can your child think of a thought, word or action that they have done this week to show love for God or their neighbour?

Warm Regards

Mrs Berry and Mrs Measham

CLUBS & ACTIVITIES

Mondays

Football Club (years 1, 2, 3) starts 3.30pm. Children collected at 4.30pm. This Club Is Full

Wednesdays

Christmas Ensemble for years 4, 5, 6 starts at 8.10am.

Netball Club (Girls years 5, 6) starts 3.30pm. Children collected at 4.15pm.

Football Club (Boys years 4, 5, 6) starts 3.30pm. Children collected at 4.30pm.

Thursdays

Football Club (Girls years 4, 5, 6) starts 8am.

Orchestra (years 4, 5, 6) starts 3.30pm. Children collected at 4.15pm.

Fridays

Handball & Dodgeball (KS2), starts at 12.10pm. This Club Is Full

Multisports Club (years 4, 5, 6), starts 3.30pm. Children collected at 4.30pm.

All clubs must be pre-booked. Should your child wish to join

MUSIC LESSONS

Reminder of days when pre-booked and pre-paid lessons take place.

Mondays – Violin

Tuesdays – Brass

Thursdays – Woodwind

Please encourage your children to remember their instrument!



WEATHER:

Despite the weather getting colder we will hopefully still go outside for breaktime. Please ensure your child comes to school with a warm coat and gloves (plus a hat and scarf if they wish). Thank you.

MESSAGES:



To communicate with your child's teacher for medical appointments or questions you may have, please put a note in your child's school diary. If you wish to follow up with an email to the school office, please do so. Thank you.

PARENTMAIL

The school uses Parentmail to communicate with parents/carers. Please contact the school office if you are experiencing any difficulties in receiving messages.



JOB VACANCIES

Effective as soon as possible, we have vacancies in school for midday supervisors to help with our busy lunchtimes during term time.

The hours are 11.40am – 12.50pm (70mins per day); five days per week.

The current hourly rate is £10.98 (subject to pay rise in negotiation) for 38 weeks per year (plus 5 weeks paid holiday).

This is an excellent opportunity to get paid experience of working in a school.

If you would like to know more or know of someone who would like this role, please email:

admin@st-marys-ipswich.suffolk.sch.uk

RECEPTION SEPTEMBER 2024 APPLICATIONS

We will be holding two open day sessions on Wednesday 15th November, one at 9.30am and another at 1.30pm. If you are thinking of applying to St Mary's for a Reception place in September 2024, please email the school to book a slot.

Our email address is: admin@st-marys-ipswich.suffolk.sch.uk

Applications for a Reception September 2024 place should be made by the deadline date of 15th January 2024. The application should be made online via the Suffolk County Council Admissions website.

<https://www.suffolk.gov.uk/children-families-and-learning/schools/school-places/apply-for-a-primary-school-place-2024-2025>



IMPORTANT: St Mary's require a completed Supplementary Information Form (SIF) which should be sent to the school before 15th January deadline please. The Supplementary Information Form (SIF) can be found on our website under *Key Information - Admissions*



**If your child was born between
1 September 2019 and
31 August 2020,
you must apply for a full-time
Reception Year school place by
15 January 2024**



You **must** make an application even if your child already has a place in a nursery class, pre-school or family hub

To apply for a place or for more information you can visit:

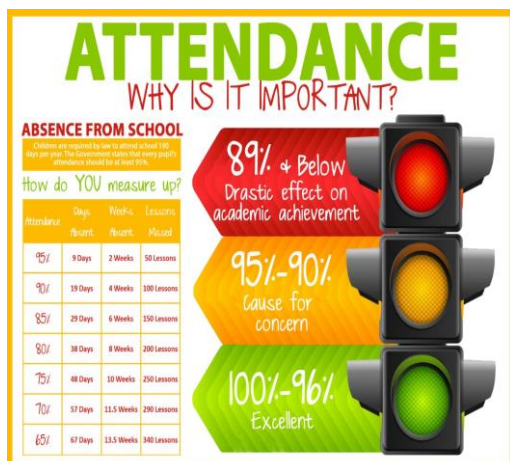
www.suffolk.gov.uk/admissions

Information is also available from:

•The Admissions Team on **0345 600 0981**

•Your local school

ATTENDANCE



Please take time to read and familiarise yourself with our Trust Attendance Policy. Please be aware that the school is unable to authorise holiday requests for absence during term time.

If you arrive after 8.50am, please come to the Office to sign the late book.

It is really important that you ensure your child arrives at school between 8:40 and 8:50am.

A late arrival after 8.50am means the class has already started and this is disruptive for your child and others in the class.

If your child is ill, please leave a message on the School Absence Line

(01473 728372) before 8am, or send an email to: admin@st-marys-ipswich.suffolk.sch.uk

https://www.stmaryscatholicprimaryipswich.com/_site/data/files/policies/D046258157B2B78BA94749F6FB9079DE.pdf

SPORTING SUCCESS



Eight girls from Football Club played at Whitton in the Under 11s tournament. The girls were very strong and determined and I was amazed by your energy and focus. They played six 10-minute games with only one sub and a very short break in-between. I know this we give you confidence when you play your league games later on in the year.

Mrs Dyer



Foxhall Dental Practice

Foxhall Dental is now accepting new NHS patients under the age of 12 years old.

Please call the reception team on 01473 258396 for more information and to schedule a dental check-up

49 Foxhall Road, Ipswich. IP3 8JU

foxhalldentalsurgery@googlemail.com





SPOTLIGHT ON YEAR 2

The children in Year 2 have had an excellent start to the school year! We've been enjoying our learning and are excited to share some of what we've been up to in our first half term.

RE



In RE we were learning about new beginnings. We learned that God is there for us at every new beginning in our lives and we learned about how God created the world. We created some stars, with God's hopes and wishes for us inside of them. We also used watercolours to create pictures of the sky with a beautiful sunrise. We learned that every day, when the sun rises, God gives us the gift of a brand new day.

Judaism Fortnight

We also learned about Judaism as an alternative faith. We learned about Shabbat, a time when Jewish people take time to rest and remember how God rested on the seventh day of Creation. We had our own 'Friday Night Dinner', which is an important custom for Jewish people around the world. We had some bread and 'wine' (squash!) and said prayers over them.



Science

We have been learning about Living Things and their habitats in Science. We have learned what features all living things have (MRS GREN) and how animals and plants depend on each other. We went on a mini-beast hunt around our Willow Garden – we found worms, spiders, beetles and ants all living in their microhabitat.



Art

In Art we have been learning about mark-making in drawing. We learned what cross-hatching, stippling etc. are and used these in our own pieces of art.



DT

In DT we have been working on our textiles skills. We have been using different stitches to attach fabrics together. We made a small felt house by cutting out pieces of felt from templates and sewing them together. We also made a class patchwork from pieces of scrap fabric.



History

We have begun our learning on The Great Fire of London. So far we have learned what London was like in 1666, how the fire started and where it initially spread to. Ask your child why the fire spread so quickly!

PACKED LUNCHES:

Please remember that packed lunches should not contain anything with nut ingredients. Chocolate bars or sweets should not be included but a chocolate biscuit (Penguin or similar) is fine. Please cut grapes in half lengthwise. If they are whole, they are a choking hazard. Thank you.

PLEASE



**NO PEANUTS
OR
NUT PRODUCTS**

Childhood Neurodiversity PST Workshop Programme Parent/Carer Workshops 2023 – 2024

Neurodiversity means that across the population there is variation in people's brains. Having people in society who see the world differently and have unique skills is an important part of life to be celebrated. The term "neurodivergent" refers to people whose brains work differently to the typical cultural standards. Neurodivergence includes conditions that people are born with including autism, ADHD, learning disability and learning disorders.

This programme of free virtual workshops for parents and carers will explore nurturing the unique strengths of neurodivergent children and young people and provide advice on how to support them with the challenges they face. Any parent or carer is welcome to join regardless of whether their child has a diagnosis. The workshops are live on Zoom and are 75 minutes long. Recordings of the workshops and resource packs will be sent after the live event to everyone who has registered.

Childhood Neurodiversity: Understanding and Managing Behaviour

When distressed, neurodiverse children and young people may show behaviours that challenge the adults around them. This workshop explores how to understand behaviour and how parents/carers can support their neurodiverse children with behaviours of distress.

Thursday 7th September 2023 – 13:00 [Book Here](#)

Childhood Neurodiversity: The Impact of Early Life Stress

The workshop explores the impact of early life stress, or traumatic experiences, on childhood development. It will consider the similarities and differences between neurodivergent traits and the impact of early life stress and discuss neurodivergent children's vulnerability to early life stress.

Tuesday 10th October 2023 – 13:00 [Book Here](#)

Childhood Neurodiversity: Understanding and Supporting Sensory Needs

What are the different sensory systems? What might sensory processing difficulties look like in children and teenagers? This workshop will answer these questions and explore how parents and carers can support a child's sensory needs.

Monday 6th November – 13:00 [Book Here](#)

Childhood Neurodiversity: Understanding and Supporting Eating Difficulties

This workshop is for parents/carers concerned about their neurodivergent child's limited diet (i.e. avoiding or restricting certain foods). We will explore why children may struggle to eat, anxiety around eating and how parents/carers can support children with these eating struggles. This workshop is not aimed at parents of children whose eating difficulties relate to body image concerns.

Thursday 7th December – 13:00 [Book Here](#)

Childhood Neurodiversity: Supporting Language and Communication

This workshop will discuss language and social communication, including how parents/carers can support their children to communicate. This workshop will be co-delivered with the Integrated Community Paediatric Services Speech and Language Therapy Team.

Tuesday 9th January 2024 – 13:00 [Book Here](#)

For more information please follow this link:

[\\st-marys.suffolk.sch.uk\staffnamespace\StaffFolders\PCrabb\Desktop\Childhood Neurodiversity PST workshops Oct 2023 – Jan 2024.pdf](#)

SUFFOLK AREA SEND INSPECTION

Ofsted and the Care Quality Commission (CQC) have notified the Local Authority and the Integrated Care Boards covering Suffolk of an Area SEND inspection which will take place over the next 3 weeks. Inspectors will be looking at how the arrangements in Suffolk support children and young people with special educational needs and/or disabilities (SEND). Inspectors will be looking at the experiences of a wide range of children receiving SEN Support, those with Education Health and Care Plans and children in Alternative Provision Settings. They will visit a range of provision and services including early years, schools, health and the Local Authority.

As part of the inspection they would like to hear the views of SENCOs about the support that practitioners, including those in early years settings and education and learning settings, provide to children and young people with SEND. They would also like to understand how SENCOs work with other agencies to ensure children and young people receive the right support.

Parents/carers can provide their views by completing an online anonymous survey at the following link; the results go directly to Ofsted: There is a survey for young people aged 11+ also accessible via this link.

<https://ofsted.smartsurvey.co.uk/p/AreaSend/10284398>

The survey will close at 9am on Tuesday 07 November 2023. The survey is voluntary, and you do not have to take part. The responses will complement the evidence collected by inspectors during the inspection.

Term dates for 2023 – 2024

Autumn Term 2023

Half term: 23rd – 27th October

End of Term: Wednesday 20th December

Spring Term 2024

Thursday 4th January – Thursday 28th March

Half term: 19th – 23rd February

Staff Training day: 3rd January & 26th February

Summer Term 2024

Monday 15th April – Friday 19th July

Bank holiday: 6th May

Half term: 27th May – 31st May

Staff Training days: 12th April