



St Mary's Newsletter

Issue 10

25th November 2022

St. Mary's Catholic Primary School, Woodbridge Road, Ipswich, IP4 4EU

<http://www.stmaryscatholicprimaryipswich.com>

School Rules:

Be ready, Be respectful, Be safe

Tweet of the Week

"Each time we join our hands and open our hearts to God, we find ourselves in the company of anonymous saints and official saints who pray with us and intercede for us as older brothers and sisters who have preceded us on this same human adventure."

Pope Francis (@Pontifex)



Week Commencing 28th Nov:

Tue 29th Nov: Yr 5 Swimming. Last session 13th December.

Thu 1st Dec: Yr1, 2 & 3 Advent Service 9am in School – parents welcome.

Fri 2nd Dec: FoSM Christmas Fair 3.30-5pm School Hall

YEARS 1, 2 & 3 ADVENT SERVICE:

We would like to invite all parents and carers of children in years 1, 2 and 3 to join us on Thursday 1st December at 9am in the school hall to celebrate our advent service.



SAFEGUARDING NOTICE:

Please keep everyone safe by following the signs to enter the car park. When leaving the car park, please stop at the exit gates, to allow parents and children to pass, before driving on. Thank you.

RECEPTION SEPTEMBER 2023 APPLICATIONS: Applications for a Reception September 2023 place should be made by the **deadline date of 15th January 2023**. The application should be made online via the Suffolk County Council Admissions website. <https://www.suffolk.gov.uk/children-families-and-learning/schools/school-places/apply-for-a-primary-school-place-20232024/>

IMPORTANT: St Mary's require a completed Supplementary Information Form (SIF) which should be sent to the school before 15th January deadline please. The Supplementary Information Form (SIF) can be found on our website under 'Key Information - Admissions'

REMINDER:

Due to allergies, please **do not bring any nut items** into school. Please check package ingredients. Also, please cut grapes in half lengthwise (can be a choking hazard). Thank you for your co-operation.

CHRISTMAS EVENTS

RECEPTION NATIVITY – ‘A KING IS BORN’ – MONDAY 5TH DECEMBER AT 2.30PM:

Parents will receive two tickets per family. Please can all children come into school on 5th December wearing plain black leggings/ jogging bottoms and either a plain black or plain white T-shirt. Thank you.

KSI NATIVITY – ‘BORN IN A BARN’ – 6TH DECEMBER AT 2.30PM:

Parents will receive two tickets per family. Please can all children come into school on 6th December wearing plain black leggings/ jogging bottoms and either a plain black or plain white T-shirt. Thank you.

KS2 NATIVITY – ‘SUPERSTAR’ – 14TH DECEMBER AT 2PM AND 15TH DECEMBER AT 9AM.

Parents will receive two tickets per family, 1 for each performance.

We will be recording the Reception, KSI and KS2 Nativities. They will be shared via Google classroom before we break for Christmas. Thank you.



All tickets will be sent home 1 week before each of the plays.

CHRISTMAS ENSEMBLE:

Please join us in church on Friday 16th December at 9.15am and hear our beautiful Christmas Ensemble.



EXTRA BANK HOLIDAY MAY 2023:

School will be closed on Monday 8th May 2023 for the bank holiday to celebrate His Majesty's coronation on 6th May 2023.

YEAR6 END OF KS2 ASSESSMENTS:

(Formally know as SATS) Mrs D-N will be hosting a **VIRTUAL** parent meeting on Monday 12th December at 6pm for Year6 parents. A meeting link will be sent closer to the date of the meeting.



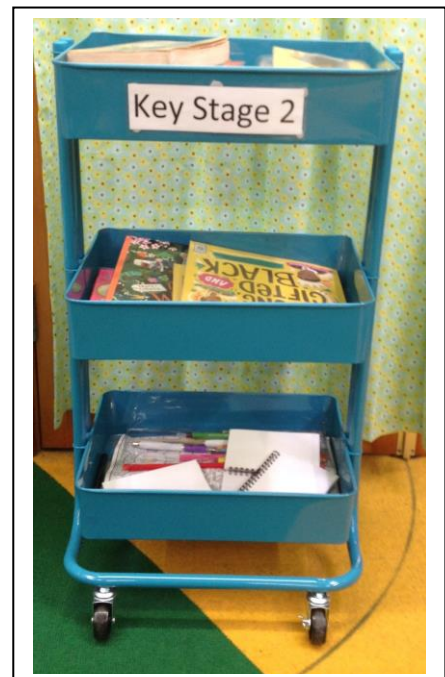
YEAR6 NETBALL:

A great start to the netball league. A huge 18 - 0 win against Rose Hill. The girls were calm, measured and showed such skill. It was a joy to watch you girls. All your hard work paid off. Thank you to supporters too!

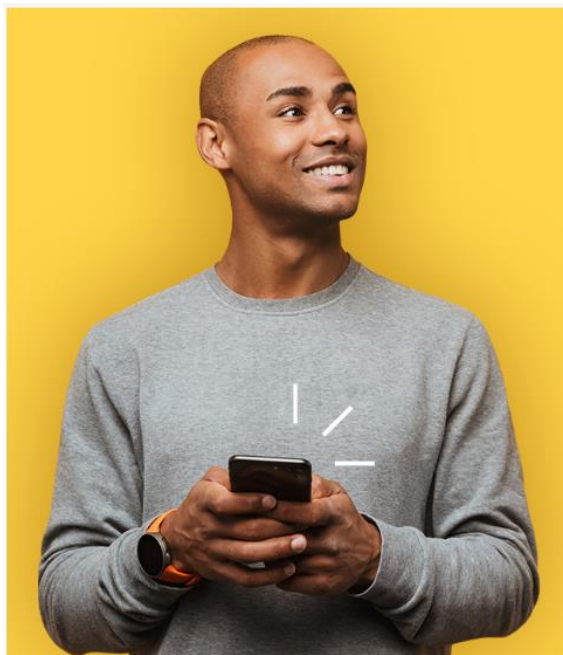


READING TROLLEY:

At St Mary's we love reading. Our reading trolley means that we can read during lunchtimes. We have lots of new books about diversity.



EASYFUNDRAISING FOSM:



GET STARTED

How to support Friends of St Mary's - Ipswich

- 1 Sign up**
Provide us with a few details to set up your profile with easyfundraising.
- 2 Download our browser extension**
Our Donation Reminder plug-in pops up automatically when you shop to let you know when a donation is available.
- 3 Track your donations**
You'll be able to see how much you've raised in your account and we'll send updates on when Friends of St Mary's - Ipswich gets paid.

Sign up and support this cause

If you will be online shopping for loved ones this Christmas, please can you think about joining easy fundraising and supporting the Friends of St Mary's

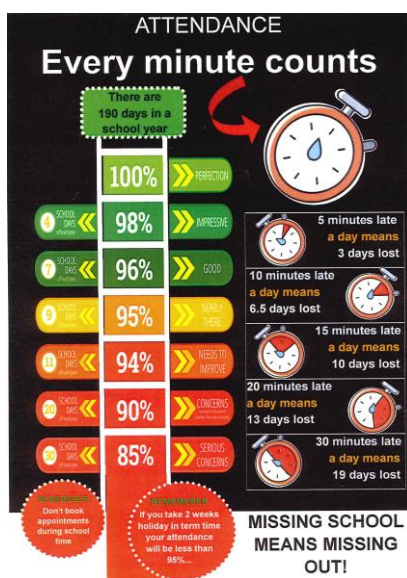
Here is the link: <https://www.easyfundraising.org.uk/causes/stmarysptaipswich/?searchSessionId=31cc2856-1fal-4e25-9313-d23b0c8ef672>

CHRISTMAS GIFTS ETC:

If you are making purchases using Amazon, please log in via Amazon Smile UK and select 'St Mary's Parent & Teacher Association' making sure it is Ipswich. This will generate donations to the FOSM at no extra cost to yourselves. Thank you.



ATTENDANCE:



Please take time to read and familiarise yourself with our Trust attendance policy. Please be aware that the school are unable to authorise holiday requests for absence during term time.

If you arrive after 8.50am please come to the office to sign the late book.

It is really important that you ensure your child arrives at school between 8:40 and 8:50am.

A late arrival after 8.50am means that the class has already started learning and this is disruptive for your child and others in the class.

https://www.stmaryscatholicprimaryipswich.com/_site/data/files/policies/DO4-6258157B2B78BA94-74-9F6FB9079DE.pdf



SPOTLIGHT ON YEAR 5

Year 5 have continued to work hard this term. We have particularly been enjoying our swimming lessons and some of our new topics.

DT:

We really enjoyed our food topic for DT which was learning about the different types of bread in different cultures. We made our own flatbreads and garlic dips and our own Danish open sandwich (smørrebrød).

Here are some photographs of our smørrebrød



SCIENCE:

We have started a new topic - Animals, including humans. We have looked at the human timeline, how babies grow in the womb and how humans change during puberty. Year 5 have been really interested in this topic and have been asking great questions.

RE:

In RE we have been learning about 'Inspirational People' and the Beatitudes. We have looked at St Josephine Bakhita, St Edith Stein, Fr Miguel & Fr Pedro Arrupe and have discussed why they are inspirational and how they followed Jesus' Beatitudes.

ENGLISH:

We have really been enjoying our books 'Secrets of a Sun King' and 'Shackleton's Journey'. The children have worked hard to write a formal letter of application and are working towards writing a balanced argument.

ART:

In Art we have been learning a new print process called reduction printing. This is a method of block printing where part of the foam tile is removed and layers of colour are printed on top of the last.

Here are some of our reduction prints.



MIND:

How are you, Suffolk?

Suffolk Mind and Suffolk County Council are working together to understand how wellbeing is among those living in Suffolk.

The data we collect will be used by Suffolk County Council to determine what actions may be needed to support wellbeing, so your response matters.



Scan the QR code on your smart phone or tablet to fill out our survey or visit: suffolkmind.org.uk/emotional-needs-survey

Working in Partnership



FOSM

Hamper raffle -

Christmas update from the Friends of St Mary's team:



Christmas Fair – next Friday December 2nd is our

Christmas fair, held after school pickup in the school hall,

from 3:30 to 5pm. Please read this information so that you don't miss out on any fun!



Please if anyone possibly has a rocking chair that Santa could borrow for the afternoon for his story sessions? If so could they get in touch.

Volunteers still needed please –

We plan to offer refreshments, Christmas items, pocket money stall with new and donated games and toys, tombola, festive games and activities, our fabulous Christmas hamper raffle, and other treats. Year 3 and the fabulous Miss Mudd will be holding a stall for CAFOD, selling hand printed wrap and soaps.

To offer all this, we are still in need of volunteers, please sign up here [Volunteer for the Christmas Fair](#) if you can help even for half an hour.

Book your child for a Santa Story session – Santa and his elf will be holding pre bookable story sessions in the school library, which will be turned into a cosy story nook for the afternoon.

For £2.50 per child paid on the day, your child/ren can enjoy a story, a reindeer biscuit and drink, and a little gift from Santa.

This is our first time of trying this, so to understand the demand we are offering some pre bookable slots. We will also aim to hold some back to book at the event to minimise disappointment

Please click here to book and read the information – [Book your child for Story with Santa](#) – where it says 'volunteer name' just put in your child's name and your details.

On the day, please come to the 'Santa Story' table (situated to your right as you enter the hall) to pay for your session and receive a coloured wristband. If you have booked the first slot at 3:45, please come to us straight away. After that, you can come and pay any time ahead of your slot, up to five minutes before your booked session.

There is no age limit, all children are welcome if they would like to come and hear a Christmas story and the gift can be enjoyed by all ages.

Please read the information on the booking form carefully to avoid disappointment, and any questions please

contact friendsofstmarysipswich@gmail.com

Christmas fun day - The ever-popular Christmas Fun Day returns for its third year, held on Christmas dinner day which is **Tuesday 13th December**. FOSM will provide Christmas crafts, games and other fun, classroom gifts and a dress down day (festive colours/ Christmas jumpers / sparkles / headbands all encouraged but please, no need to buy anything new)! This will all be contained during the school day.



FOSM will ask for voluntary donations where families are able to do so and will provide a go fund me link nearer the time, and a morning bucket collection. All children will be included regardless of donations, so please only contribute what you can afford. We wouldn't want to miss an opportunity for fundraising, as every penny counts, but please don't worry if you aren't in a position to donate.

Thanks from the FOSM PTA team

SEND:

People are thinking about Christmas presents already. Raising a child with sensory processing differences often means that toys and items that they may appreciate will be different from the neuromajority. These are just some ideas I've compiled for common sensory profiles - seeker of proprioception; seeker of tactile; seeker of visual; sensory sensitive. There are many more options but this is a start. Share them with family and friends or people you work and support. Enjoy!
 #annavot #pediatricoccupationaltherapy #pediatricoccupationaltherapist #sensoryprocessingdisorder #sensoryprocessing

Sensory Seeker?

LOOKING FOR A GIFT FOR A CHILD WHO LOVES VISUAL STIMULI?

@Anna V OT #Anna V OT

lava lamp	spinning tops, spinners
sand timers	marble mazes
visual timers	gears, cogs and wheels
glitter jars	abacus
mini lights	slinky
disco ball	light brite
color changing lights	light projectors
fiber optics	light pad
visual metronomes	liquid motion bubble timer
oil & water bottles	jellyfish lava lamp
adjustable room light	marble works
light up balls	pin wheels

Children seeking visual stimuli often carefully look at things from different angles, look out of their periphery, enjoying watching moving parts & use looking at things as part of their play. They also may be sensitive to bright lights. Giving them plenty of opportunities to get extra visual input helps them regulate their body and feel good.

Sensory Seeker?

LOOKING FOR A GIFT FOR A CHILD WHO LOVES TOUCHING/TACTILE?

- sand or water table or plastic tub
- sensory bin ingredients - dry rice, dried beans, sand, magic sand, water beads, floam, shaving cream, soil, playdoh, plasticine, paint, water toys
- slime making ingredients or kits
- massagers, chewelry, lotions
- Lego or other construction type items
- fuzzy soft blankets, soft textured clothing, stuffies
- mermaid style pillows (sequins)
- crafting kits or supplies
- fidgets - spinners, clickers, squeezes, twistables,

**activities: building, crafting, swimming, drawing, gardening

@Anna V OT #Anna V OT

Children seeking tactile sensation love to touch things, have busy hands & are often considered handsy during their play. Give them plenty of opportunities to use their hands when learning, touch and interact with things and hold items in their hands to play with to help them concentrate. If your child wants their whole body to experience the sensation ie. putting their full arms in the messy play, they love tactile input!!

Sensory Sensitive?

LOOKING FOR A GIFT FOR A CHILD WHO IS EXTRA SENSITIVE?

Children who are sensory sensitive can be easily overwhelmed in busy sensory environments or with certain sensations (often sound and vision). It is so important to offer them opportunities to help their body feel safe and help them learn what tricks work for their body if they are starting to feel overwhelm. These are some great gift ideas for them!

- hoodies
- ear defenders or noise cancelling head phones or plain old ear protection!
- sunglasses
- hats/ball caps
- books
- play tents/forts
- bed tent
- projected light for a bedroom ceiling
- sensory bottle (clear plastic bottle filled with oil, food coloring and water)

@Anna V OT #Anna V OT

**Determine what your child does to feel good: do they like fuzzy soft blankets, soft textured clothing, stuffies OR fidgets - spinners, clickers, squeezes, twistables OR reading OR building OR sensory play. Pick a gift idea from their preferences as they can use those play choices to help regulate their sensory system.

**activities: one on one vs group activities. Date night with a parent. Home movie night. Board games. Drawing lessons.

Sensory Seeker?

LOOKING FOR A GIFT FOR A CHILD WHO LOVES PRESSURE/PROPRIOCEPTION?

@Anna V OT #Anna V OT

- | | |
|---------------------------|-------------------------|
| weighted blanket | yoga ball/peanut ball |
| body sock | balance board |
| scooter board | medicine/weighted balls |
| putty/playdoh/plasticine | bean bag chairs |
| mini trampoline | squigz |
| drums or wind instruments | hammers/tools/shovels |
| balloons to blow up | zoom ball |
| gum & chewy treats | squeeze/stress balls |
| hammocks | lycra bed sheet |
| weighted stuffies | chewlery |
| massager | electric toothbrush |
| crash pad | pogo stick/ball |

**activities: bowling, swimming, climbing, hiking, biking

Children seeking proprioception often love crashing into things, hanging or climbing, love hugs & are often considered rough during their play. Give them plenty of opportunities to get extra pressure input when playing, it helps them regulate their body and feel good.

TERM DATES:

Term dates for 2022 – 2023

Autumn Term 2022

Monday 5th September – Friday 16th December

Half term: 24th – 28th October

Staff Training day: 1st & 2nd September

Spring Term 2023

Wednesday 4th January – Friday 31st March

Half term: 13th – 17th February

Staff Training day: 3rd January

Summer Term 2023

Tuesday 18th April – Thursday 20th July

Bank holiday: 1st May & 8th May

Half term: 29th May – 2nd June

Staff Training days: 17th April, 21st July