

Newsletter

Issue 23

12th March 2021

St. Mary's Catholic Primary School, Woodbridge Road, Ipswich, IP4 4EU

<http://www.stmaryscatholicprimaryipswich.com>



School Rules:
Be ready, be respectful, Be safe

Tweet of the Week

"The beginning of the return to God is the recognition of our need for him and his mercy. This is the right path, the path of humility."

[Pope Francis \(@Pontifex\)](#)



Dear Parents and Carers,

It has been truly joyful to welcome everyone back to school this week. The children have enjoyed reconnecting with their friends and teachers.

We have seen that all of your hard work and commitment to remote learning during lockdown transferring to the classroom. The teachers have been supporting pupils to remember and demonstrate our school learning behaviours of collaboration, curiosity, active listening, resilience and empathy as they adapt to life in school.

Well done everyone, a great first week back.

Have a rest this weekend and take time to recharge ready for next week.

Warmest regards,
Mrs Berry

Virtual Parent Evening:

Thank you all for booking your slots so efficiently, all of the slots are now full.

Parents evening will be on either Wednesday 24th or Thursday 25th March 2021 depending on your booked appointment.

Face Masks:

Please could we remind **all parents** to please wear a face mask/covering when dropping off or collecting your child from school.

Extra Layers to keep warm:

Please remember that due to our Covid19 risk assessment we are keeping the doors and windows open to help with the circulation of air. As the weather is still cool, please could you ensure that your child has extra layers on to help keep them warm, vests, tights and even base layers if needed. As extra help if your child is feeling the cold then we would allow them to wear a plain navy fleece over their school uniform.

Please make sure that all school uniform is named as when children misplace their items it makes it easier for teachers to give back to the correct person if it has the names clearly visible

Music Lessons:

A reminder that music lessons, apart from Violins, will take part in school. Brass lessons on Wednesday's and Woodwind on Thursday's. Please ensure your child has their instrument with them.

Clothing Bank at School:

We are pleased to inform you that we now have our own clothing bank in the school car park.

Items you can donate

- Clothes
- Paired shoes
- Blankets
- Handbags
- Belts
- Towels
- CD's and DVD's
- Video games
- Books
- Bric-a-brac

Items you cannot donate

- * Pillows & Duvets
- * Glass
- * Metal
- * Paper
- * Carpets
- * Soiled Rugs
- * Rubbish



Thank you, Kiln Farm – Prayer trail Donation

A big thank you to Kiln Farm Nursery in Kesgrave for donating gardening pots for our Lenten prayer trail. It was wonderfully kind of you and the pots will be put to good use.

Tools for Uncertainty: Parent Workshop:

Life is always unpredictable but over this last year we have been living with a much higher degree of uncertainty than is usual. This workshop will introduce strategies that parents/carers can use to support their young people to help them cope better with uncertainty now but also in the years to come. Being able to adapt in situations by learning to tolerate emotions and cope with change reduces stress levels and is a great skill for life.

This workshop is suitable for parents/carers of all children who are struggling in the current pandemic who would like to learn strategies they can teach their children for managing difficult thoughts, feelings and situations.

Monday 22 March 1pm or 6pm, Tuesday 23 March 6pm or 7.15pm

Families can book themselves on to this workshop for free through Eventbrite:

www.eventbrite.co.uk/e/tools-to-manage-uncertainty-parent-workshop-tickets-142489504945



Suffolk Parent Carer Network (SPCN).



**know that you
can't pour
from an
empty cup!**

We understand, all too well, the additional stresses that parent/carers are going through during this challenging time. So, we at SPCN, have been looking for ways that we could further support you. Due to the success of our family support boxes, the team have created a Caring For You box designed especially with our parent/carers wellbeing in mind.

Our handpicked boxes include a range of products aimed at de-stressing, refreshing and treating you. Boxes include items such as:

- Adult Colouring Books
- Stress Balls
- Hot beverages and snacks
- Toiletries
- A tealight
- Plant seeds and pot
- Information & Guides
- Small items for your children/young people (aged 5-25)

These boxes are available to all parent/carers that have SPCN membership. If you feel that you would benefit from a Caring For You box, then please email: admin@spcn.org.uk with the subject title of: Caring For You and the following details:

Your full name and Address,

The number of children aged 5-11 in your household

The number of children aged 12-16 in your household

The number of young people aged 17-25 in your household

If you are aware of any other parent/carers that would benefit from receiving a box then please ask them to see the details below on how they can join our membership before they email their request.

How to join SPCN's Parent/Carer Membership

(For any parent/carer, foster parent or guardian)

- Go to www.spcn.org.uk
- Click the **Become a Member** tab
- Complete the form and Submit

*all together
better*

PTA:

Your School Lottery

We are delighted to announce the launch of our school lottery!

The first draw is set to take place on **Saturday 10th April at 8pm**, on how to take part and you can join right now!

Tickets are £1 each and you can buy them using either direct debit or by debit card.

Either: click this link - [Support St Mary's Catholic Primary School Ipswich when you play Your School Lottery - Your School Lottery](#)

Or: Search 'Your School Lottery' on the internet, click 'Buy a Ticket', put in St Mary's Ipswich and it will show our logo and 'St Mary's Catholic Primary School Ipswich', click support us. Step by step instructions are on a separate attachment.

Each week all entrants in the 'Your School Lottery' stand to win a £25,000 jackpot, and someone from our school community will win a guaranteed prize every single week – a proportion of our school's ticket takings.

It is open to everyone – parents, teachers, grandparents, work colleagues, parishioners – so please spread the word far and wide. The more people that play, the more funds we raise for the school.

Funds raised will go towards St Mary's school as per the Friends of St Mary's constitution.

Best of luck! From Marge Jessop and the FOSM PTA



YOUR SCHOOL LOTTERY

WE'VE LAUNCHED A LOTTERY

Buy your tickets now to help our fundraising

- Tickets cost just £1
- First draw Saturday 10th April.
- Local prize every week
- Chance to win the £25,000 jackpot!
- Drawn every Saturday at 8pm

To start supporting, visit:
yourschoollottery.co.uk
and search for: **St Mary's Ipswich**

Supporters must be 18 years of age or older

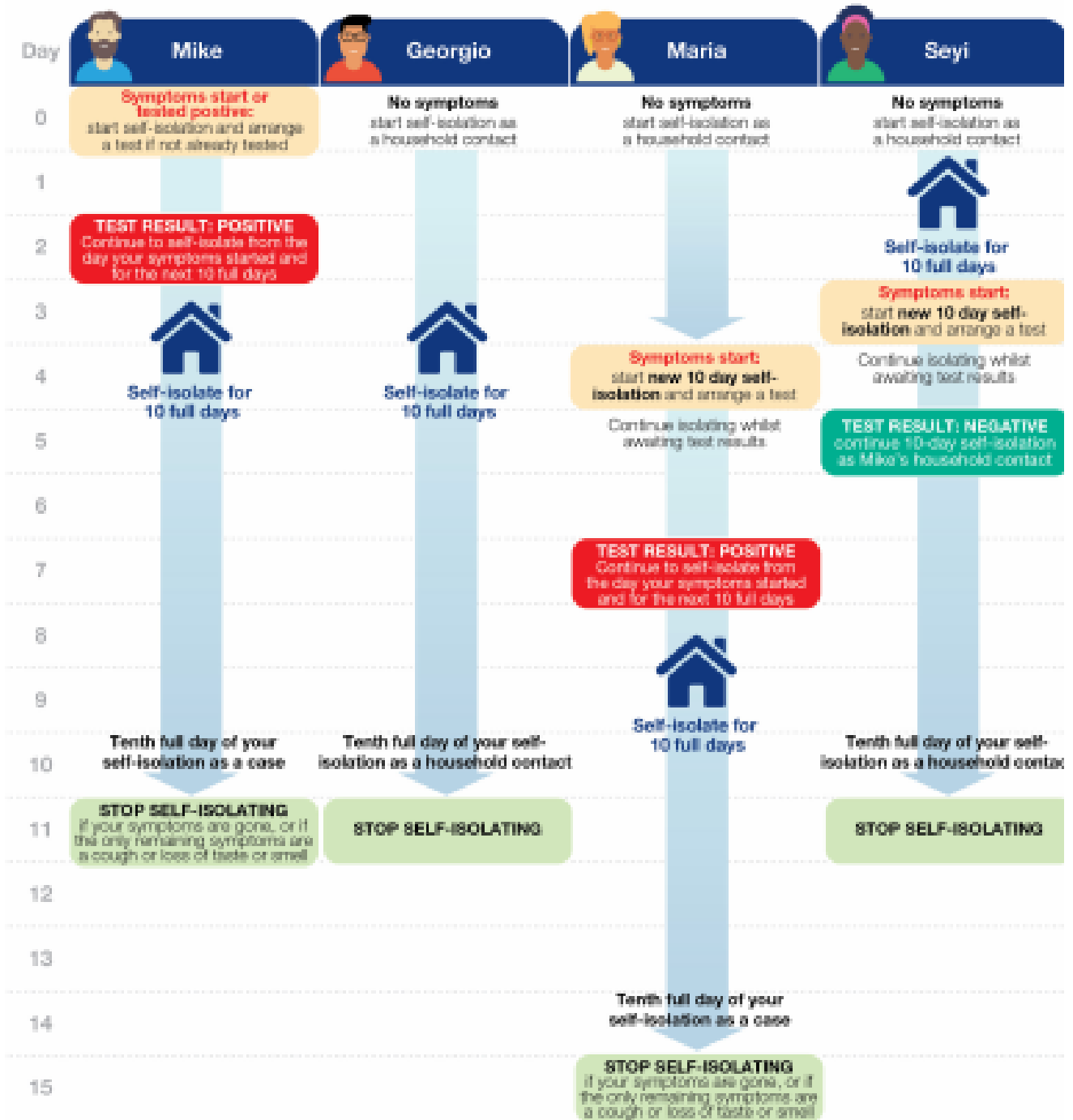


Public Health
England

Stay at home and self-isolate.

Please see [detailed guidance online](#).

Mike's household: In this example, Mike lives with Georgio, Maria and Seyi. Mike is the first case of COVID-19 in this household. He and everyone in the household begin self-isolating from the day Mike's symptoms start (or if he had no symptoms, from the date of his positive test).



Self-isolate for 10 full days.

You need to self-isolate from the day the first person in your household started symptoms and for the next 10 full days. If they did not have symptoms, self-isolate from the day of their test and for the next 10 full days.

To self-isolate means:

Do not go to work, school, or public areas and do not use public transport or taxis. Only leave your home to get to your test if you need to, observe strict social distancing advice and return immediately afterwards.



HANDS

FACE

SPACE

Date for your Diary:

Term dates for 2021

Spring Term 2021

Tuesday 5th January – Friday 26th March

Half term: 15th – 19th February

Staff Training day: 4th January

Summer Term 2021

Monday 12th April – Friday 16th July

Bank holiday: 3rd May

Half term: 31st May – 4th June

Staff Training days: 19th & 20th July (disaggregated)

Term dates for 2021 - 2022

Autumn Term 2021

Wednesday 01st September – Friday 17th December

Half term: 25th – 29th October

Staff Training day: 01st September

Spring Term 2022

Tuesday 4th January – Friday 08th April

Half term: 21st – 25th February

Staff Training day: 4th January

Summer Term 2022

Monday 25th April – Thursday 21st July

Bank holiday: 02nd May

Half term: 30th May – 03rd June

Staff Training days: 25th April, 20th & 21st July

