



St. Mary's

Learning Behaviours

LEARNING BEHAVIOURS

At St. Mary's, we believe that in order for our pupils to grow into happy, healthy and successful adults they must be encouraged to adopt positive learning behaviours.

As a staff group and in consultation with the children, the following learning behaviours are the ones that we felt were most important.

These are highlighted and encouraged, across the school.

RESILIENT

Resilience is important mostly for our mental health. It's a life skill we take with us into adulthood. Building resilience in children helps them to overcome obstacles more easily and reduces the chances of them suffering from anxiety or other stress-related disorders.

EYFS

KS1



Tommy the Tortoise never gives up. He perseveres and is resilient when school becomes a little bit more challenging.

KS2



RESILIENT



EMPATHETIC

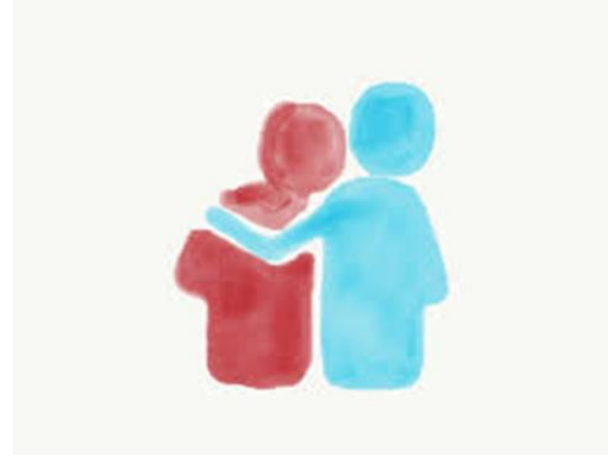
Helping young children to develop a strong sense of empathy is beneficial because: It helps them to build a sense of security and stronger relationships with other children and educators, positioning them well for learning. It encourages tolerance and acceptance of others. It promotes good mental health.

EYFS
KS1



Wilbur the Wolf is kind and thoughtful, always caring for others.

KS2



EMPATHETIC

Empathy is...

seeing with the **eyes** of another,
listening with the **ears** of another,
and **feeling** with the **heart** of another.



CURIOUS

Developing curiosity helps a child to be willing and able to continually grow, learn and question what is around them. To develop an imagination and sense of creativity that gives them the basic tools they need to be successful adults.

EYFS
KS1

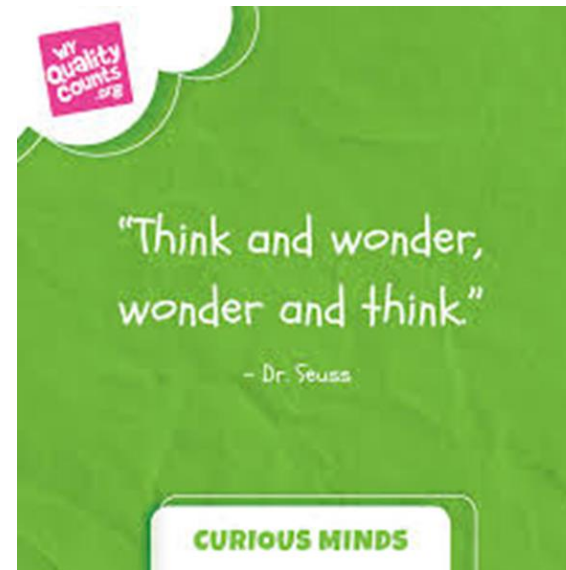


Colin the Cat is curious about the world around him, always asking questions.

KS2



CURIOUS



COLLABORATIVE

Collaboration helps children to discover each others' strengths, interests and capabilities. Instead of limiting learning to a one way stream from a teacher or an adult to them, they can learn from each other. As a result each child can develop a unique set of skills and knowledge in a fun and efficient way.

EYFS
KS1



Milly the Meerkat loves to learn collaboratively, working hard with her friends.

KS2



COLLABORATIVE

“

Talent wins games, but teamwork and intelligence win championships.”

Michael Jordan

ACTIVELY LISTENING

Listening and attention skills are vital in a child's development because they allow the child to function properly in society. When developing these skills, it is important that your child become an active listener, which means that he use what he hears from you and others as part of the communication process

EYFS

KS1



Ollie the Owl stays focussed on the task he has been given and listens carefully all the time.

KS2



ACTIVELY LISTENING

